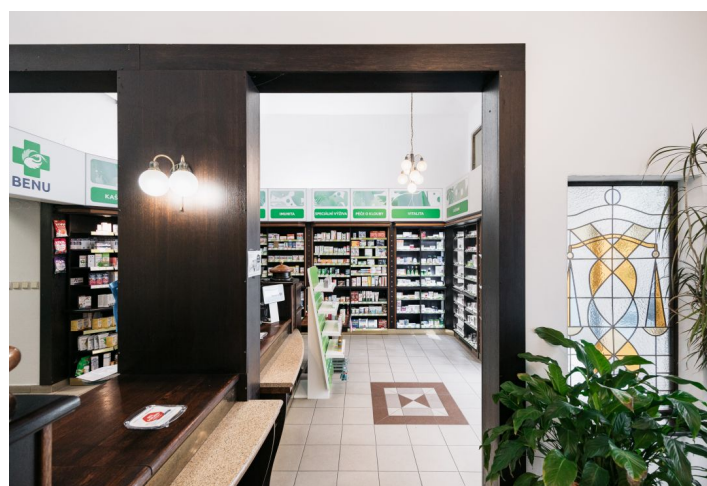


Retail space

Rented

Prague 1, Nové Město, Jungmannova



## Retail space

Rented

Prague 1, Nové Město, Jungmannova

|                  |                    |
|------------------|--------------------|
| Service price    | 1 868 CZK monthly  |
| Available area   | 107 m <sup>2</sup> |
| Parking          | -                  |
| PENB             | G                  |
| Reference number | 104461             |

Retail space for lease on the ground floor situated in the Jungmannova street in the centre of Prague with windows oriented to a busy street. The surrounding area provides complete civic amenities.

**Location:**

The object is located in an attractive financial and business centre with great transport connections. The metro station Národní třída (line B), Můstek (line A, B) and tram stops are situated nearby.

Rental and service charges listed without VAT. Lessee pays no commission.

