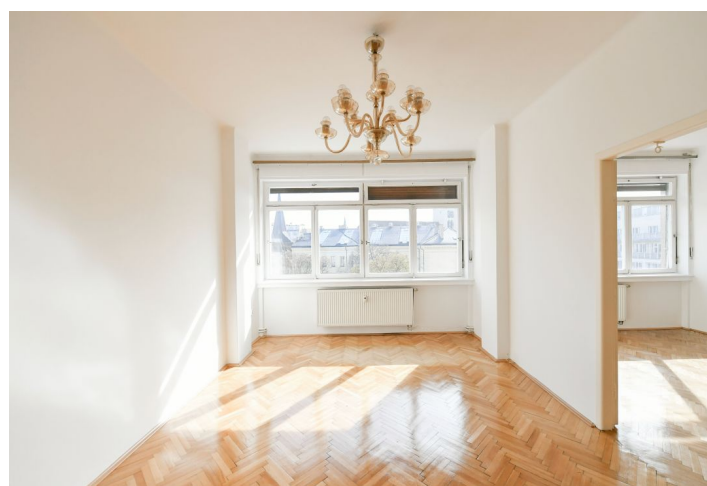


## Apartment Two-bedroom (3+kk)

Rented

83 m<sup>2</sup>, Prague 1, Nové Město, Žitná



# Apartment Two-bedroom (3+kk)

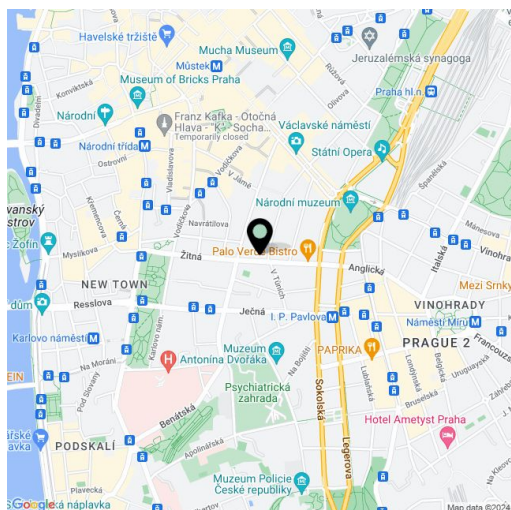
**Rented**83 m<sup>2</sup>, Prague 1, Nové Město, Žitná

Total area	83 m <sup>2</sup>
Parking	-
Cellar	-
Service price	Monthly deposit for service charges, water and heating: CZK 5,500. Electricity is billed separately.
PENB	E
Reference number	104454
Available from	Immediately

**This is a bright refurbished unfurnished 2-bedroom apartment with beautiful views of the historic monuments in the vicinity. Situated on the 5th floor of a well kept renovated corner Functionalist building with a lift and preserved original details. Centrally located just a few minute walk from Wenceslas Square, Karlovo náměstí and I.P.Pavlova metro stations and trams, with full amenities and services within easy reach.**

The interior features a living room, a fully fitted windowless kitchen accessible from the hall, 2 bedrooms, a bathroom including a bathtub and a walk-in shower, a small **walk-in closet**, a separate toilet, a storage room, and an entrance hall with a large built-in wardrobe. The windows of the apartment are facing the street.

**Preserved original details, solid wood parquet floors**, tiles, central heating, washing machine, dishwasher, chip entry to the building.



\* Size of the unit according to the Housing Act.

The area consists of the sum total of the internal area of every room.