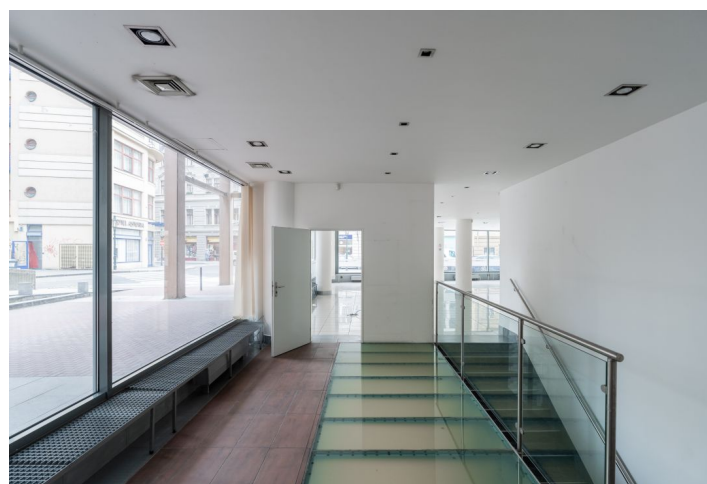


Retail space

€ 13.00 / m<sup>2</sup> | CZK 325 / m<sup>2</sup>

Prague 1, Staré Město, Rybná



## Retail space

€ 13.00 / m<sup>2</sup> | CZK 325 / m<sup>2</sup>

Prague 1, Staré Město, Rybná

Service price	190 CZK monthly per m <sup>2</sup>
Available area	435 m <sup>2</sup>
Parking	EUR 210 / pp / month
PENB	C
Reference number	104453

**Retail space for lease on the ground floor and basement of the Burzovní palác, very close to the Republic Square with excellent transport accessibility. All services and shops directly in the building or nearby.**

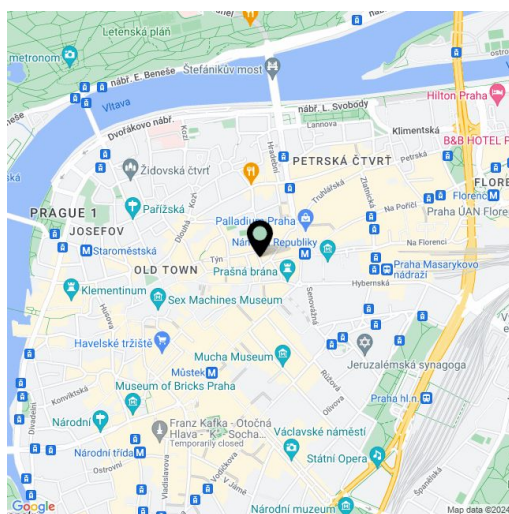
The space is now available only as a whole, including the basement, with a total area of 435 sq. m (219 sq. m on the ground floor for 18 EUR/sq. m and 216 sq. m in the basement for 8 EUR/sq. m).

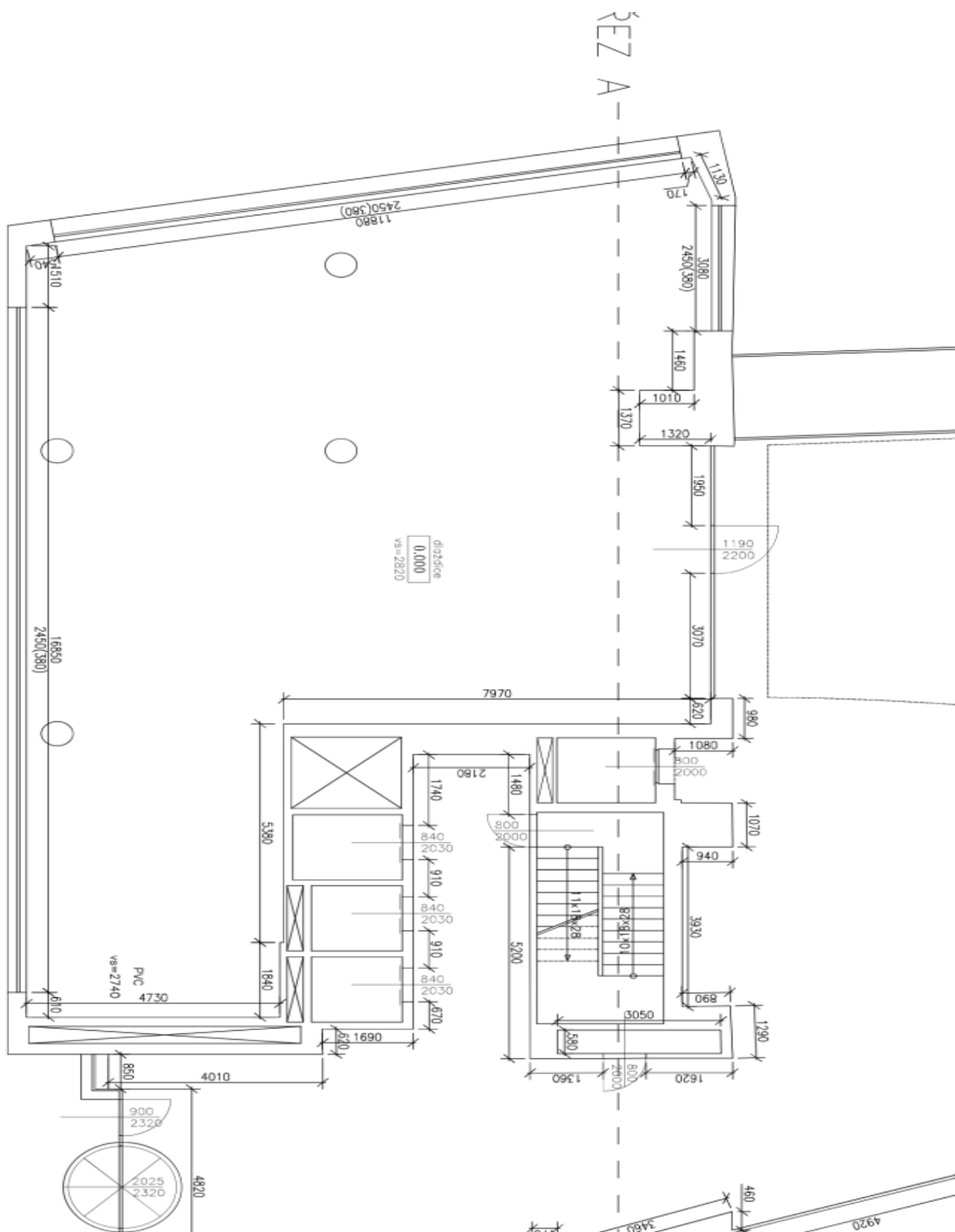
The services include an estimate of direct consumption.

**Location:**

The Nám. Republiky metro station (B line) is close to the building, as well as a tram and bus stop. The Masarykovo train station is a ten-minute walk. Good access to the Václav Havel Airport Prague, reachable within thirty minutes by car. Wide choice of services in the neighborhood.

Rental and service charges listed without VAT. Lessee pays no commission.





Retail space

€ 13.00 / m<sup>2</sup> | CZK 325 / m<sup>2</sup>

Prague 1, Staré Město, Rybná

