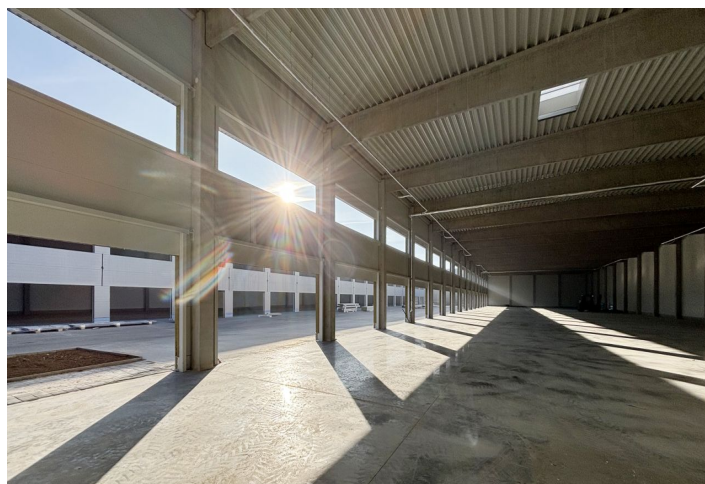


## Industrial space

Ask for price

3 777 m<sup>2</sup>, Praha-západ, Tuchoměřice, U Špejcharu



## Industrial space

Ask for price

3 777 m<sup>2</sup>, Praha-západ, Tuchoměřice, U Špejcharu

|                         |                               |
|-------------------------|-------------------------------|
| Total area              | 3 777 m <sup>2</sup>          |
| Available area for rent | 3 777 m <sup>2</sup>          |
| Min. area               | 370 m <sup>2</sup>            |
| Ceiling height          | 7.4 m                         |
| Floor loading capacity  | 5 t/m <sup>2</sup>            |
| Column grid structure   | —                             |
| Structure               | Reinforced concrete structure |
| PENB                    | G                             |
| Reference number        | 104377                        |

Industrial premises **from 370 sq.m.** with the possibility of building office space **up to 140 sq.m.** for lease in an industrial complex in the village of Tuchoměřice in the Prague-West district. The premises are suitable for light production, warehousing and business activities.

**Location:**

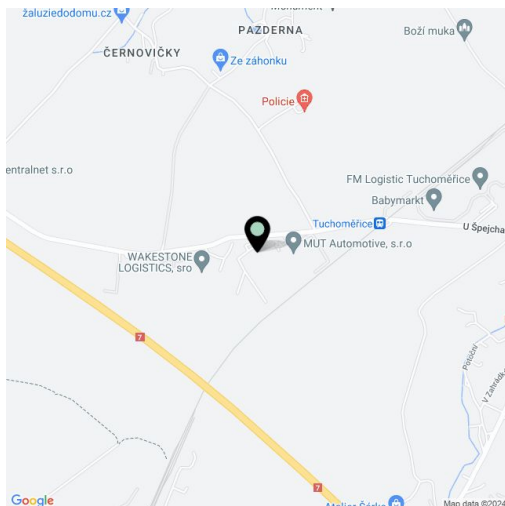
The premises are located in the district of Prague-West, in the village of Tuchoměřice, in close proximity to the R7 expressway in the direction of Prague-Chomutov and is less than 3 km from the Václav Havel International Airport Prague (Prague/Ruzyně).

**Production/warehouse premises:**

- Flexible units from 370 sq.m.
- Office space up to 140 sq.m. for each unit
- Entrance gate - 3 x 3 m
- Floor loading capacity 5 t
- Clear height 7,4 m

**Available from Q1/2025.**

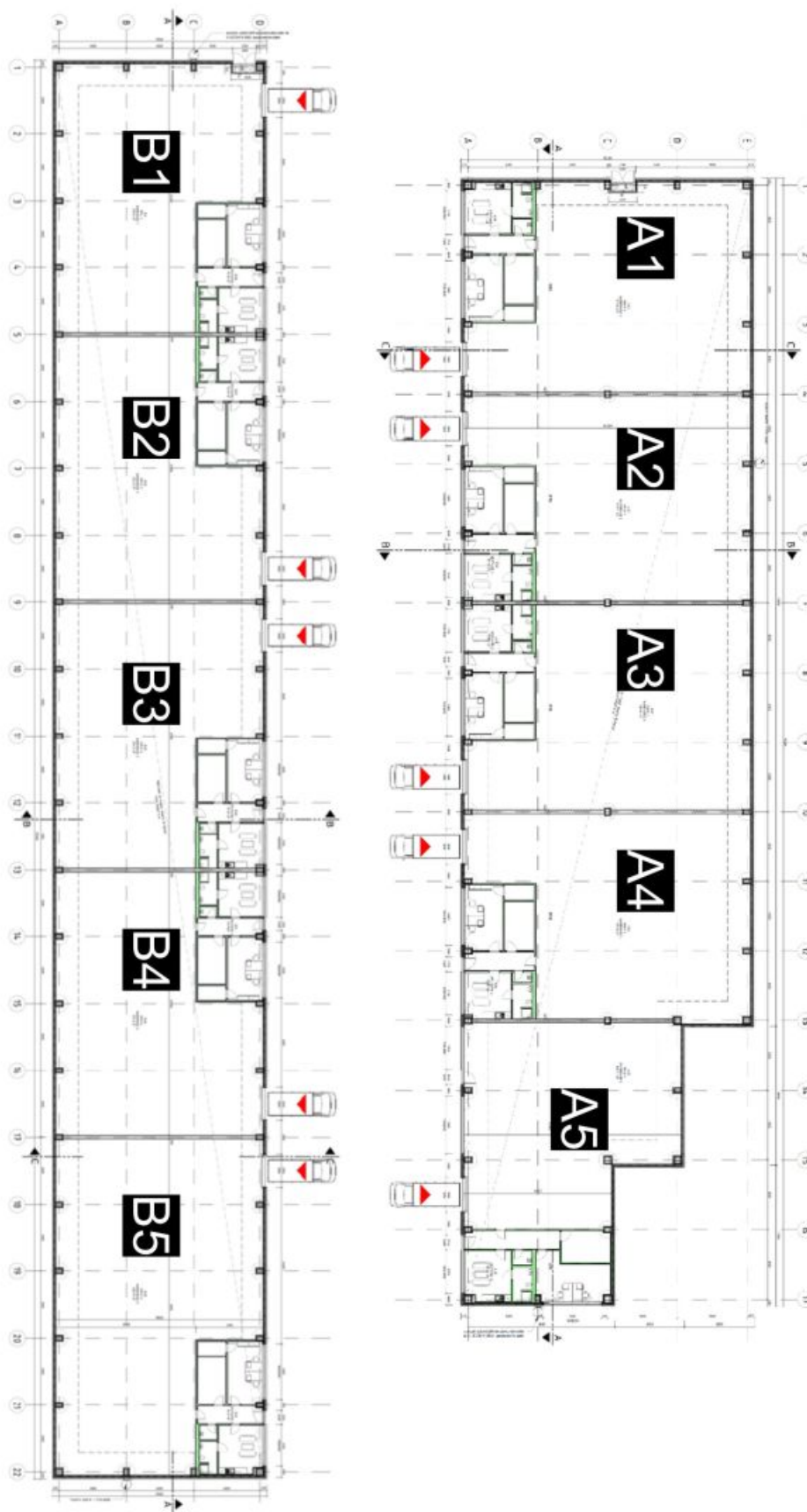
Tenant does not pay commission.



Industrial space

3 777 m<sup>2</sup>, Praha-západ, Tuchoměřice, U Špejcharu

Ask for price



3 777 m<sup>2</sup>, Praha-západ, Tuchoměřice, U Špejcharu

