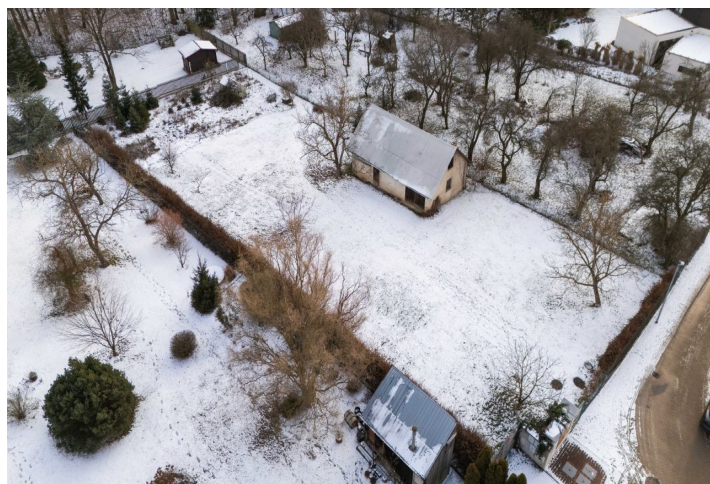


Land

€ 952 934 | CZK 23 790 000

1610 m², Prague 5, Radotín, Minerální



Land

€ 952 934 | CZK 23 790 000

1 610 m², Prague 5, Radotín, Minerální

Price per sq. m.	14 776 CZK
Total area	1 610 m ²
Land type	Housing
Reference number	104356

This set of two building plots located in a unique place in Prague 5 above the confluence of the Berounka and the Vltava rivers, right next to the Slavičí údolí nature reserve and near the Radotínsko-Chuchelský háj nature park, allows you to create a peaceful home in the embrace of nature and, moreover, with all the comforts of the city.

The area, according to the land use plan, is located in a **buildable zone with a purely residential function (OB-A)**, and the coefficient of floor areas is 0.2. **All utility networks** are already on the plot. **Easy access** is provided by a dead-end street (asphalt and cobblestone pavement). The flat grassy area is surrounded by **mature trees**. It is possible to use it as a whole or for the construction of two family houses.

A beautiful place surrounded by **nature parks** and at the same time easily accessible by car and public transport. It is possible to take a bus from a nearby stop to the Prague-Radotín railway station in a short time and from there continue by train to the city center. By car you can quickly connect to the Prague Ring Road and the R4 expressway, and the new tram stop in Slivenec is about 10 minutes away by car. Within a short driving distance is a kindergarten and elementary school, an Art school, supermarkets, restaurants, and a post office. The popular **Biotop Radotín** swimming pool is also nearby.

Total area 1,610 m².

