

Land

€ 467 813 | CZK 11 700 000

1396 m², Praha-východ, Podolanka, Hlavní

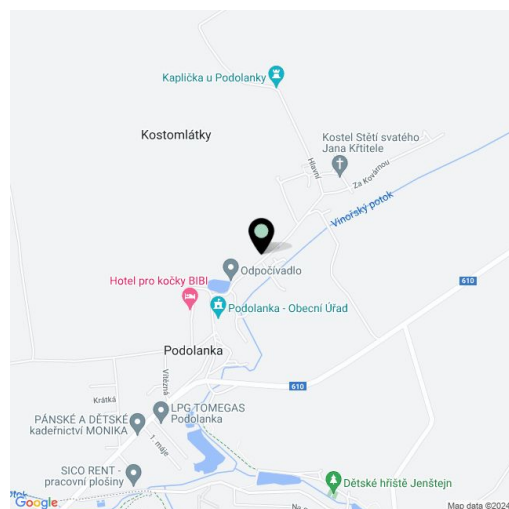


Land

€ 467 813 | CZK 11 700 000

1 396 m², Praha-východ, Podolanka, Hlavní

Price per sq. m.	8 381 CZK
Total area	1 396 m ²
Land type	Commercial
Reference number	104347



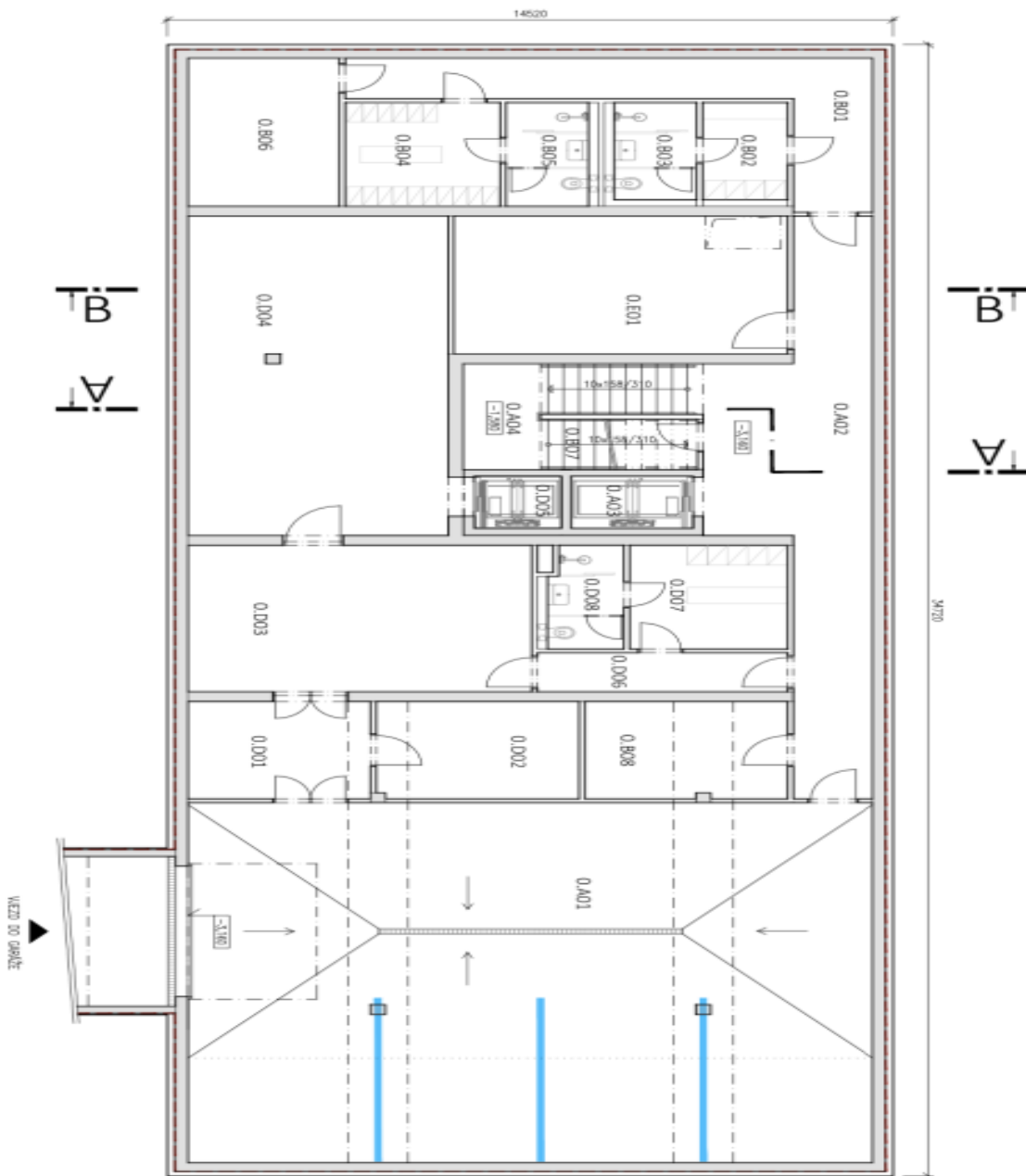
This connected set of plots with a total area of 1,396 m² with a freshly issued zoning permit for the construction of a smaller retirement home is located in the village of Podolanka, in the northeastern suburbs of Prague, only 2 km from the city limits and approx. 15 km from the center.

The land is flat, grassy, and located directly on the **village square**. The property is connected to a **full range of all utilities** (water, electricity, gas, sewerage) and access to the property is via a **historic, listed, and reconstructed Renaissance gate with preserved sgraffiti**.

The offer includes full **project and implementation documentation**, and the project is therefore ready for the building permit request process. The plan is for a three-story building with 16 beds, 2 social rooms, multiple terraces, a room for rehabilitation, a nurse's room, a food service operation with all the necessary facilities, **an elevator, a garage**, and parking spaces. The total usable area is expected to be almost 1,500 m². **Outdoor seating and a barbecue area** are also planned.

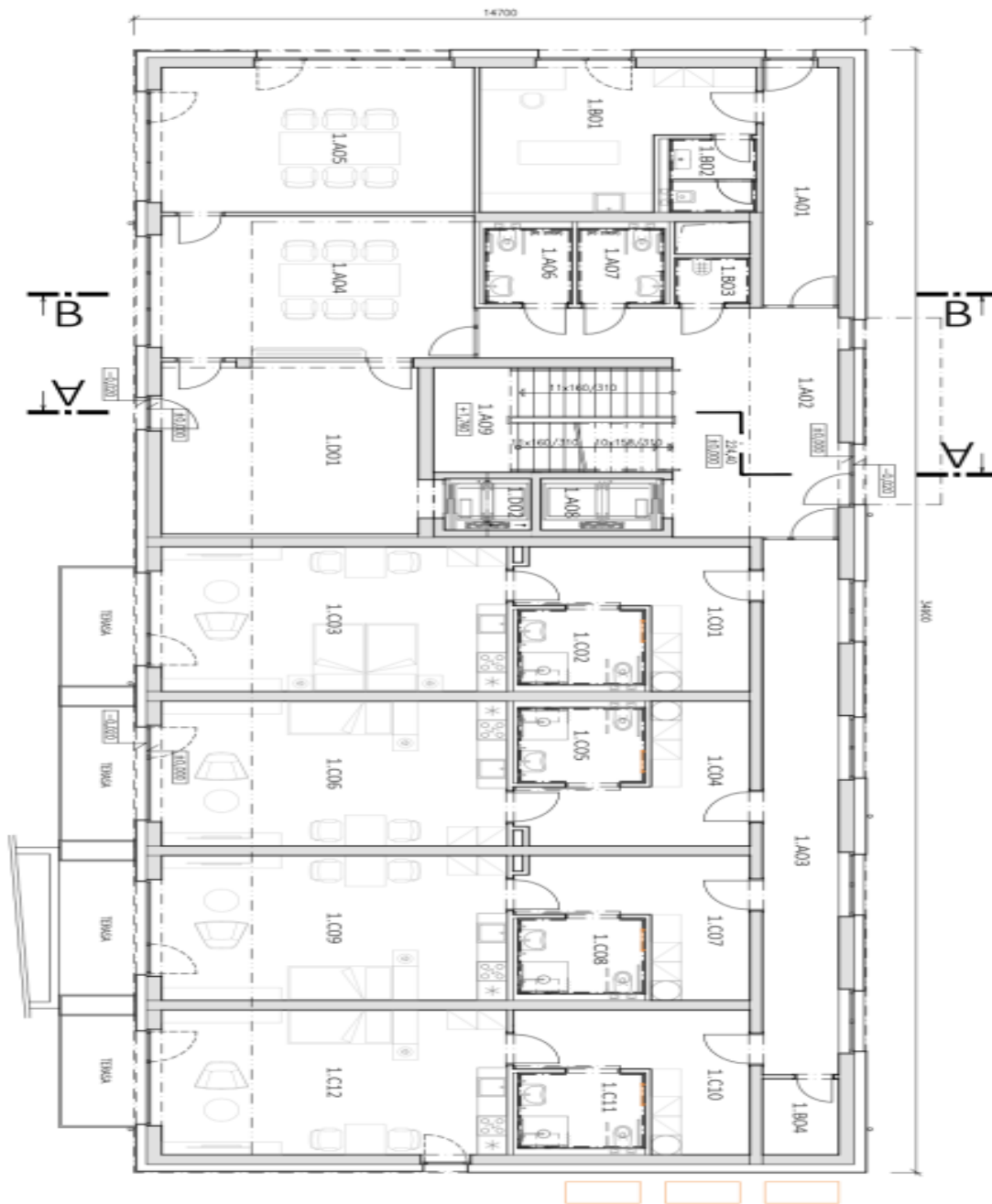
The nearest public infrastructure is available in the Prague districts of Víněň, Kbely, and Letňany, or in Brandýs nad Labem, about 5 km away. The place is very accessible by car and suburban bus from the **Letňany metro station** and it's also easy to get to Mladoboleslavská Street, the D10 highway, and the Prague Ring Road.

Total area 1,396 m².

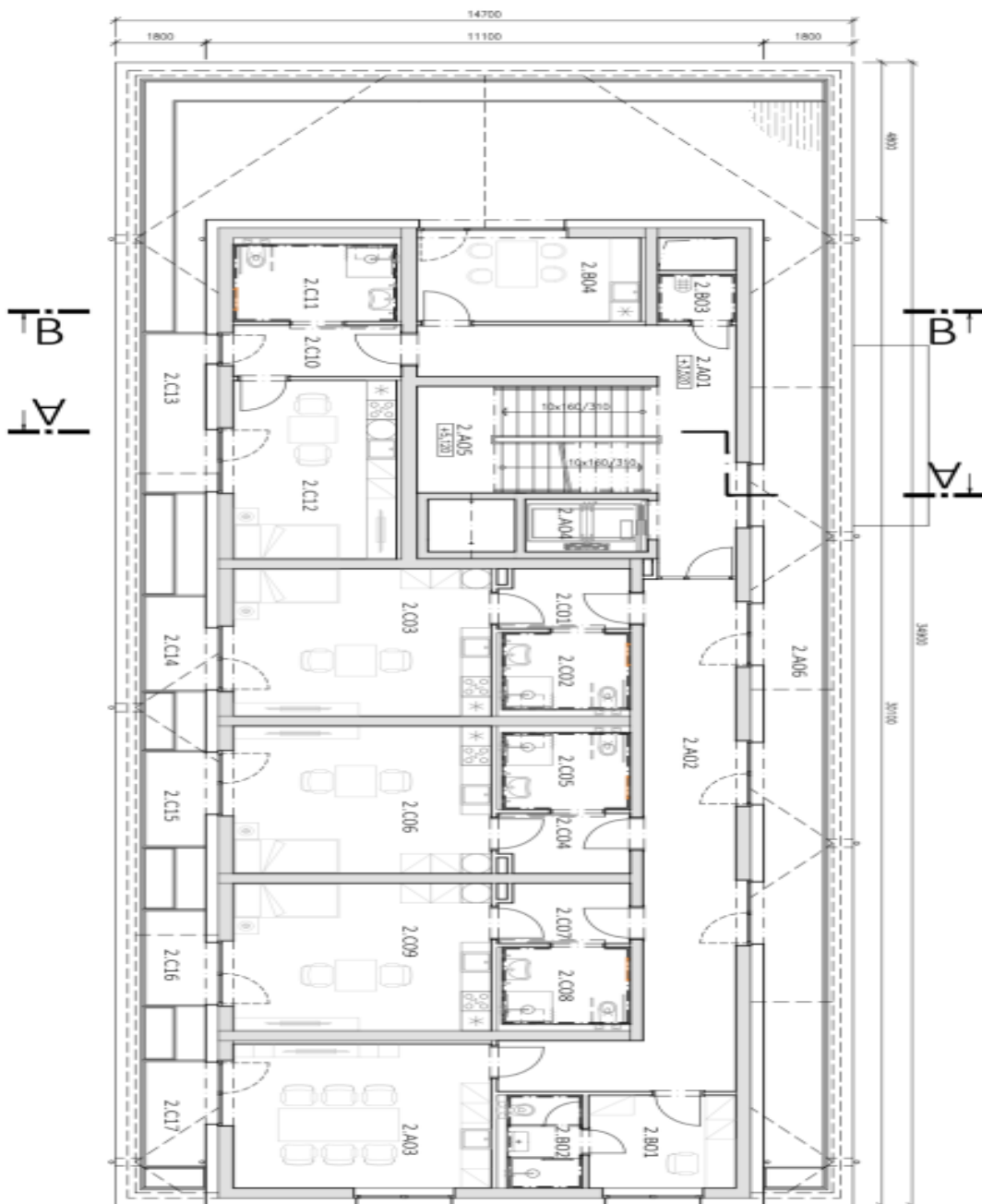


PROJEKT	PRŮŘEZ
0.001	0.001
0.002	0.002
0.003	0.003
0.004	0.004
0.005	0.005
0.006	0.006
0.007	0.007
0.008	0.008
0.009	0.009
0.010	0.010
0.011	0.011
0.012	0.012
0.013	0.013
0.014	0.014
0.015	0.015
0.016	0.016
0.017	0.017
0.018	0.018
0.019	0.019
0.020	0.020
0.021	0.021
0.022	0.022
0.023	0.023
0.024	0.024
0.025	0.025
0.026	0.026
0.027	0.027
0.028	0.028
0.029	0.029
0.030	0.030
0.031	0.031
0.032	0.032
0.033	0.033
0.034	0.034
0.035	0.035
0.036	0.036
0.037	0.037
0.038	0.038
0.039	0.039
0.040	0.040
0.041	0.041
0.042	0.042
0.043	0.043
0.044	0.044
0.045	0.045
0.046	0.046
0.047	0.047
0.048	0.048
0.049	0.049
0.050	0.050
0.051	0.051
0.052	0.052
0.053	0.053
0.054	0.054
0.055	0.055
0.056	0.056
0.057	0.057
0.058	0.058
0.059	0.059
0.060	0.060
0.061	0.061
0.062	0.062
0.063	0.063
0.064	0.064
0.065	0.065
0.066	0.066
0.067	0.067
0.068	0.068
0.069	0.069
0.070	0.070
0.071	0.071
0.072	0.072
0.073	0.073
0.074	0.074
0.075	0.075
0.076	0.076
0.077	0.077
0.078	0.078
0.079	0.079
0.080	0.080
0.081	0.081
0.082	0.082
0.083	0.083
0.084	0.084
0.085	0.085
0.086	0.086
0.087	0.087
0.088	0.088
0.089	0.089
0.090	0.090
0.091	0.091
0.092	0.092
0.093	0.093
0.094	0.094
0.095	0.095
0.096	0.096
0.097	0.097
0.098	0.098
0.099	0.099
0.100	0.100

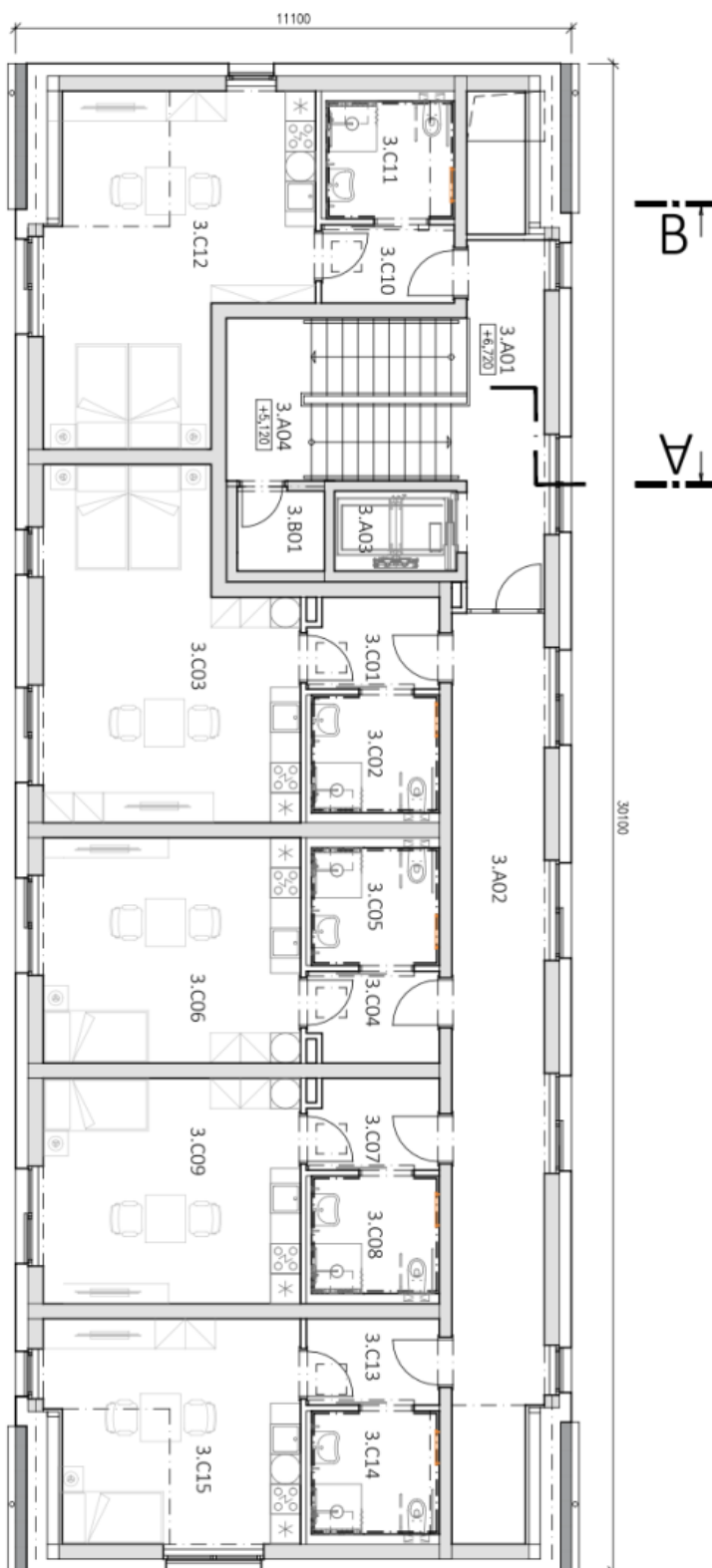
1 396 m², Praha-východ, Podolanka, Hlavní



ČÍSLO KÓDU	POPIS	POKRYTÍ
101	101 KANCELÁŘ	21,50 m²
102	102 KANCELÁŘ	21,50 m²
103	103 KANCELÁŘ	21,50 m²
104	104 KANCELÁŘ	21,50 m²
105	105 KANCELÁŘ	21,50 m²
106	106 KANCELÁŘ	21,50 m²
107	107 KANCELÁŘ	21,50 m²
108	108 KANCELÁŘ	21,50 m²
109	109 KANCELÁŘ	21,50 m²
110	110 KANCELÁŘ	21,50 m²
111	111 KANCELÁŘ	21,50 m²
112	112 KANCELÁŘ	21,50 m²
113	113 KANCELÁŘ	21,50 m²
114	114 KANCELÁŘ	21,50 m²
115	115 KANCELÁŘ	21,50 m²
116	116 KANCELÁŘ	21,50 m²
117	117 KANCELÁŘ	21,50 m²
118	118 KANCELÁŘ	21,50 m²
119	119 KANCELÁŘ	21,50 m²
120	120 KANCELÁŘ	21,50 m²
121	121 KANCELÁŘ	21,50 m²
122	122 KANCELÁŘ	21,50 m²
123	123 KANCELÁŘ	21,50 m²
124	124 KANCELÁŘ	21,50 m²
125	125 KANCELÁŘ	21,50 m²
126	126 KANCELÁŘ	21,50 m²
127	127 KANCELÁŘ	21,50 m²
128	128 KANCELÁŘ	21,50 m²
129	129 KANCELÁŘ	21,50 m²
130	130 KANCELÁŘ	21,50 m²
131	131 KANCELÁŘ	21,50 m²
132	132 KANCELÁŘ	21,50 m²
133	133 KANCELÁŘ	21,50 m²
134	134 KANCELÁŘ	21,50 m²
135	135 KANCELÁŘ	21,50 m²
136	136 KANCELÁŘ	21,50 m²
137	137 KANCELÁŘ	21,50 m²
138	138 KANCELÁŘ	21,50 m²
139	139 KANCELÁŘ	21,50 m²
140	140 KANCELÁŘ	21,50 m²
141	141 KANCELÁŘ	21,50 m²
142	142 KANCELÁŘ	21,50 m²
143	143 KANCELÁŘ	21,50 m²
144	144 KANCELÁŘ	21,50 m²
145	145 KANCELÁŘ	21,50 m²
146	146 KANCELÁŘ	21,50 m²
147	147 KANCELÁŘ	21,50 m²
148	148 KANCELÁŘ	21,50 m²
149	149 KANCELÁŘ	21,50 m²
150	150 KANCELÁŘ	21,50 m²
151	151 KANCELÁŘ	21,50 m²
152	152 KANCELÁŘ	21,50 m²
153	153 KANCELÁŘ	21,50 m²
154	154 KANCELÁŘ	21,50 m²
155	155 KANCELÁŘ	21,50 m²
156	156 KANCELÁŘ	21,50 m²
157	157 KANCELÁŘ	21,50 m²
158	158 KANCELÁŘ	21,50 m²
159	159 KANCELÁŘ	21,50 m²
160	160 KANCELÁŘ	21,50 m²
161	161 KANCELÁŘ	21,50 m²
162	162 KANCELÁŘ	21,50 m²
163	163 KANCELÁŘ	21,50 m²
164	164 KANCELÁŘ	21,50 m²
165	165 KANCELÁŘ	21,50 m²
166	166 KANCELÁŘ	21,50 m²
167	167 KANCELÁŘ	21,50 m²
168	168 KANCELÁŘ	21,50 m²
169	169 KANCELÁŘ	21,50 m²
170	170 KANCELÁŘ	21,50 m²
171	171 KANCELÁŘ	21,50 m²
172	172 KANCELÁŘ	21,50 m²
173	173 KANCELÁŘ	21,50 m²
174	174 KANCELÁŘ	21,50 m²
175	175 KANCELÁŘ	21,50 m²
176	176 KANCELÁŘ	21,50 m²
177	177 KANCELÁŘ	21,50 m²
178	178 KANCELÁŘ	21,50 m²
179	179 KANCELÁŘ	21,50 m²
180	180 KANCELÁŘ	21,50 m²
181	181 KANCELÁŘ	21,50 m²
182	182 KANCELÁŘ	21,50 m²
183	183 KANCELÁŘ	21,50 m²
184	184 KANCELÁŘ	21,50 m²
185	185 KANCELÁŘ	21,50 m²
186	186 KANCELÁŘ	21,50 m²
187	187 KANCELÁŘ	21,50 m²
188	188 KANCELÁŘ	21,50 m²
189	189 KANCELÁŘ	21,50 m²
190	190 KANCELÁŘ	21,50 m²
191	191 KANCELÁŘ	21,50 m²
192	192 KANCELÁŘ	21,50 m²
193	193 KANCELÁŘ	21,50 m²
194	194 KANCELÁŘ	21,50 m²
195	195 KANCELÁŘ	21,50 m²
196	196 KANCELÁŘ	21,50 m²
197	197 KANCELÁŘ	21,50 m²
198	198 KANCELÁŘ	21,50 m²
199	199 KANCELÁŘ	21,50 m²
200	200 KANCELÁŘ	21,50 m²



PROJEKT	POZEMEK
2.A01	1490 m ²
2.A02	1470 m ²
2.A03	1470 m ²
2.A04	1470 m ²
2.A05	1470 m ²
2.A06	1470 m ²
2.B01	1470 m ²
2.B02	1470 m ²
2.B03	1470 m ²
2.B04	1470 m ²
2.C01	1470 m ²
2.C02	1470 m ²
2.C03	1470 m ²
2.C04	1470 m ²
2.C05	1470 m ²
2.C06	1470 m ²
2.C07	1470 m ²
2.C08	1470 m ²
2.C09	1470 m ²
2.C10	1470 m ²
2.C11	1470 m ²
2.C12	1470 m ²
2.C13	1470 m ²
2.C14	1470 m ²
2.C15	1470 m ²
2.C16	1470 m ²
2.C17	1470 m ²



TABUĽKA MÍSTNOSTI
MÍSTNOST PLOCHA

A. SPOLEČNÉ PROSTORY	
3.A01	CHODBA
3.A02	CHODBA
3.A03	ŠKOLNÍ VÝHMĚ
3.A04	ISOLACE
CELKEM SPOLEČNÉ PROSTORY	
	61,980 m ²

B. PROVOZNÍ PROSTORY	
3.B01	ŠKOLA
CELKEM ZAMĚSTNANCI PROVOZ	
	2,877 m ²

C. KLIENTSKÉ POKOJE	
3.C01	ŽENSKÉ
3.C02	KOUPELNA
3.C03	PROLÍZKOVÝ POKOJ
3.C04	ŽENSKÉ
3.C05	KOUPELNA
3.C06	HEMNOLÁZKOVÝ POKOJ
3.C07	ŽENSKÉ
3.C08	KOUPELNA
3.C09	HEMNOLÁZKOVÝ POKOJ
3.C10	ŽENSKÉ
3.C11	KOUPELNA
3.C12	PROLÍZKOVÝ POKOJ
3.C13	ŽENSKÉ
3.C14	KOUPELNA
3.C15	HEMNOLÁZKOVÝ POKOJ
CELKEM ZAMĚSTNANCI PROVOZ	
	182,771 m ²