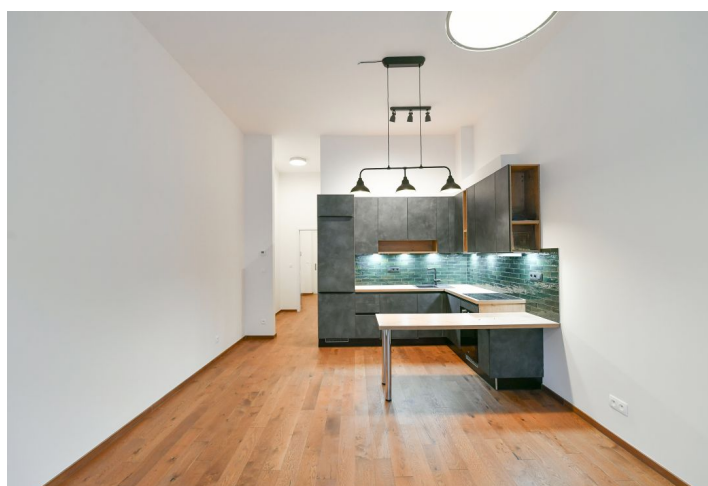


## Apartment One-bedroom (2+kk)

Rented

48 m<sup>2</sup>, Prague 5, Smíchov, Na Valentince



# Apartment One-bedroom (2+kk)

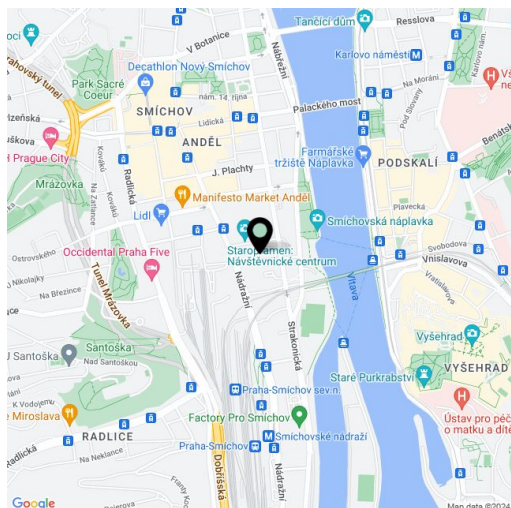
**Rented**48 m<sup>2</sup>, Prague 5, Smíchov, Na Valentince

|                  |  |
|------------------|--|
| Total area       | 48 m <sup>2</sup>  |
| Parking          | Garage parking.  |
| Garage           | Yes  |
| Cellar           | -  |
| Service price    | Monthly deposit for services, water, and heating: CZK 3,500. Electricity is billed separately. |
| PENB             | Not required   |
| Reference number | 104251   |
| Available from   | Immediately  |

This brand new unfurnished apartment is situated on the 2nd floor of a completely refurbished historic apartment building with an elevator located close to the Anděl commercial center in Smíchov and a newly arising district with a pedestrian zone, great accessibility by metro and tram, and within easy reach of the French School, the Smíchov and Výtoň embankments, and several sports grounds.

The interior features a living room with a fully fitted open plan kitchen and dining area, a bedroom facing a quiet courtyard terrace, a bathroom (walk-in shower, toilet), and an entrance hall. The apartment is accessible from the **courtyard terrace** in the building.

**Oak floors**, tiles, curtains, central heating, washer/dryer, dishwasher, induction cooktop. A **garage parking** space is available at CZK 3,000/month.



\* Area of the unit according to the Civil Code. The area consists of the sum total area of the entire unit bounded by perimeter walls.