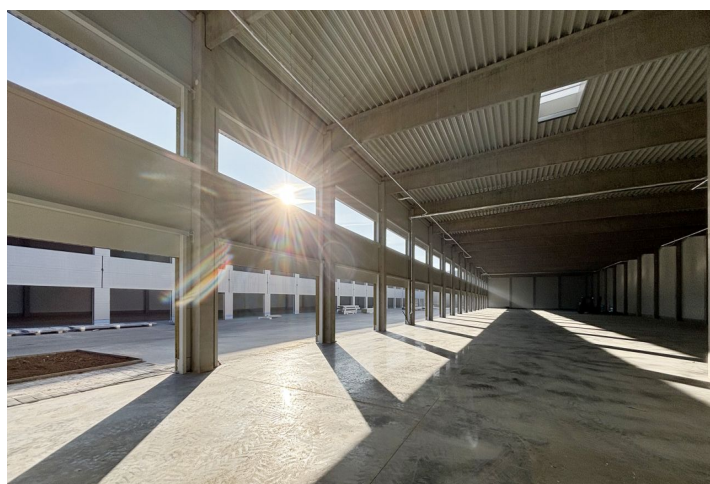


Logistic park

3 777 m², Praha-západ, Tuchoměřice, U Špejcharu

Ask for price



Logistic park

[Ask for price](#)3 777 m², Praha-západ, Tuchoměřice, U Špejcharu

Total area	3 777 m ²
Available area for rent	3 777 m ²
Ceiling height	7.4 m
Floor loading capacity	5 t/m ²
Column grid structure	—
Structure	Reinforced concrete structure
PENB	G
Reference number	104232

Warehouse and production space for rent in an industrial complex in the village of Tuchoměřice in the Prague-West district. The premises are suitable for light production, warehousing and business activities.

Location:

The complex is located in the Prague-West district, in the village of Tuchoměřice, in close proximity to the R7 expressway in the direction of Prague-Chomutov and is less than 3 km from the Václav Havel International Airport Prague (Prague/Ruzyně).

Production/warehouse premises:

- Flexible units from 370 sq.m.
- Office space up to 140 sq.m. for each unit
- Entrance gate - 3 x 3 m
- Floor loading capacity 5 t
- Clear height 7,4 m

Available from Q1/2025.

Tenant does not pay commission.

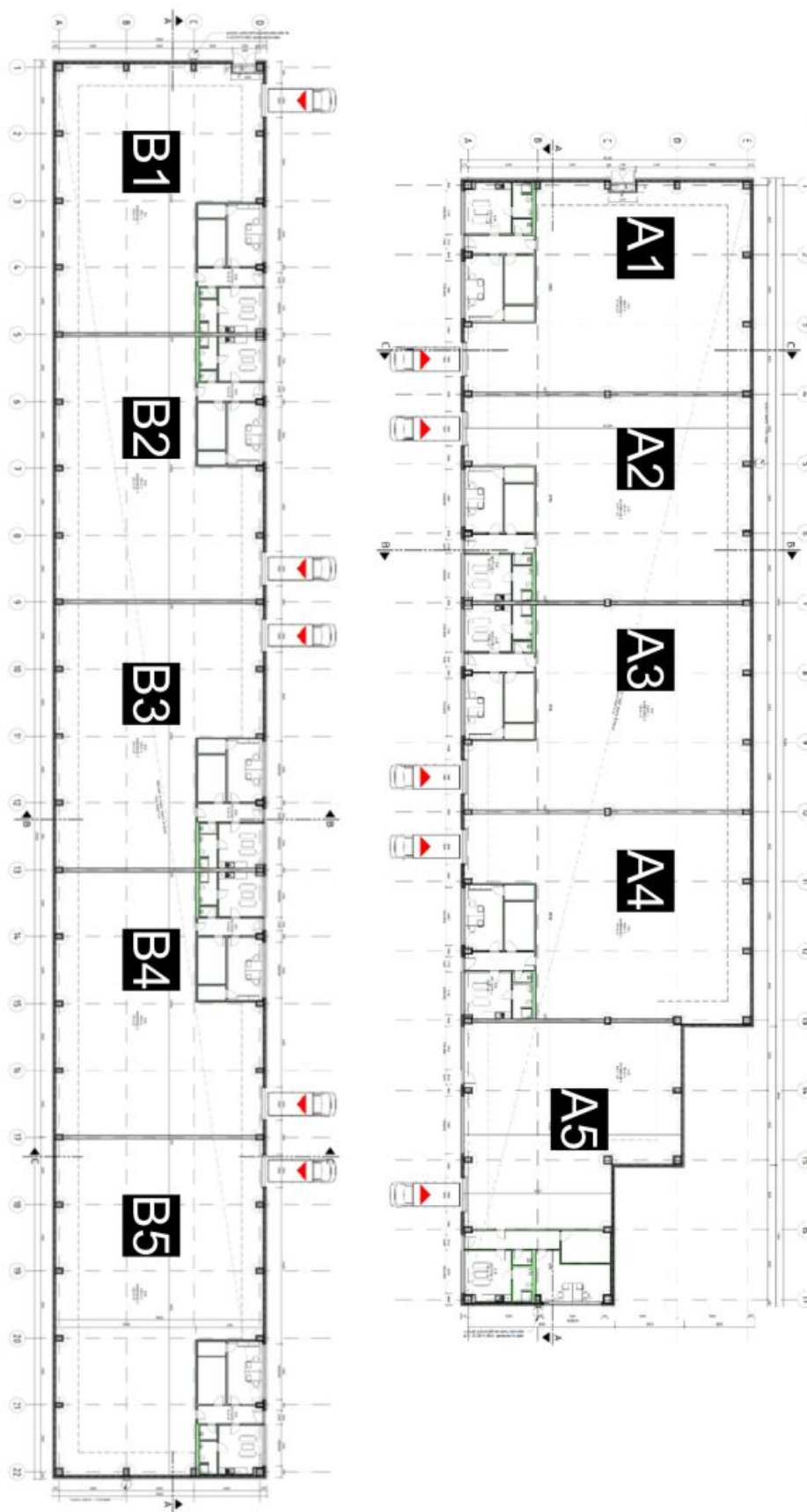
3 777 m², Praha-západ, Tuchoměřice, U Špejcharu



Logistic park

3 777 m², Praha-západ, Tuchoměřice, U Špejcharu

Ask for price



Logistic park

Ask for price

3 777 m², Praha-západ, Tuchoměřice, U Špejcharu

