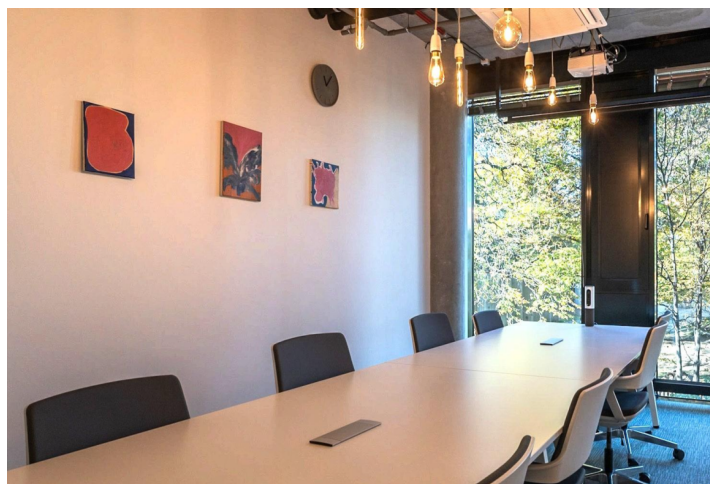
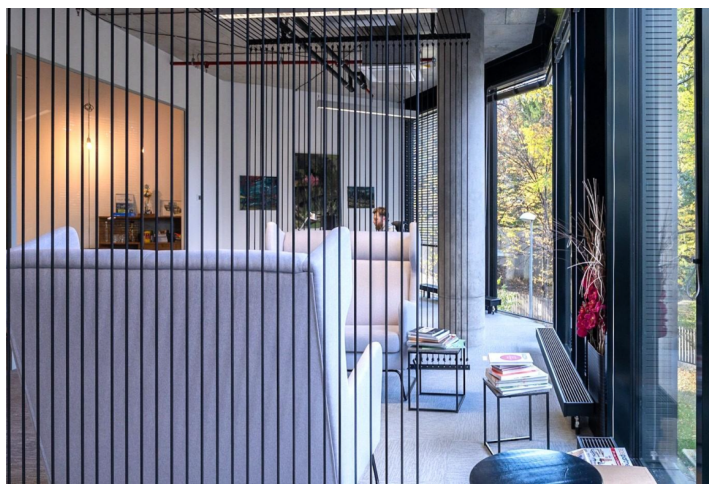
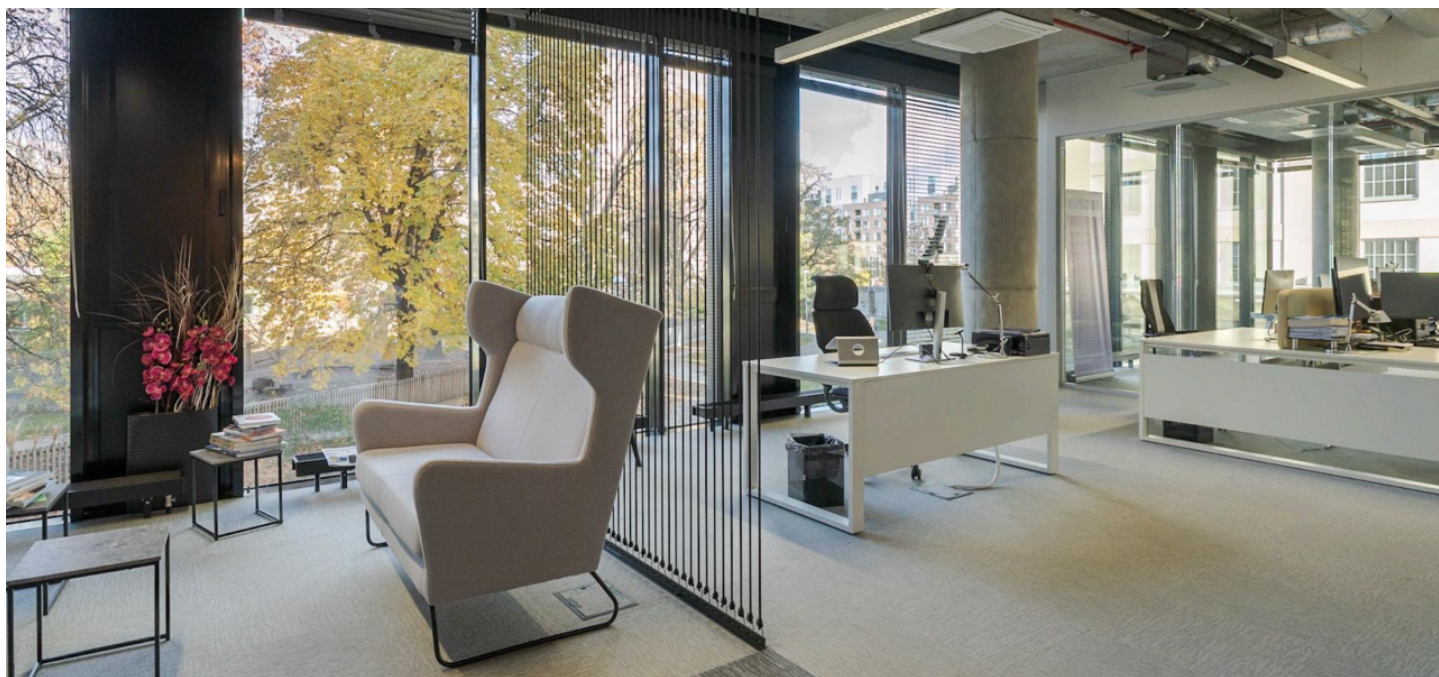


Office space

€ 10.00 / m<sup>2</sup> | CZK 250 / m<sup>2</sup>

Prague 7, Holešovice, U Uranie





## Office space

€ 10.00 / m<sup>2</sup> | CZK 250 / m<sup>2</sup>

Prague 7, Holešovice, U Uranie

<b>Service price</b>	140 CZK monthly per m <sup>2</sup>
<b>Available area</b>	434 m <sup>2</sup>
<b>Cellar</b>	-
<b>Parking</b>	EUR 120 / pp / month, 4 parking places
<b>PENB</b>	G
<b>Reference number</b>	104156

Office space for sublease until the 30th November 2027 on the 1st floor in the complex located in Prague Holešovice. Furnished premises ready to move in. Possibility of parking spaces.

Space layout: Entrance reception, 4 meeting rooms, 2x open space, 2x office, meeting room, large open equipped kitchen (fridge, dishwasher, microwave), storage room, server room and shared toilets on the floor

**Location:**

The object is located in the area of Prague 7 with easy access to tram stations Ortenovo náměstí, U Průhonu and Dělnická. Excellent transport links including direct access to the D1 and D8 motorways towards Berlin.

**Features and Services:**

Air Conditioner with control

Heating

Sprinklers

Double floor

Carpets

Interior blinds

Openable windows

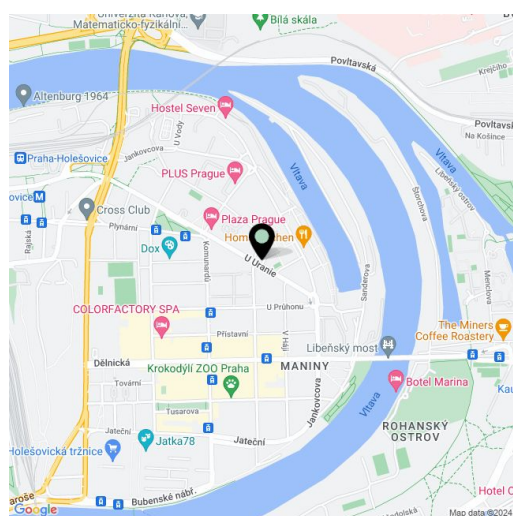
Lighting

Own equipped kitchenettes

Shared toilets

Security and 24/7 access

Rental and service charges are listed without VAT. Lessee pays no commission.



Office space

€ 10.00 / m<sup>2</sup> | CZK 250 / m<sup>2</sup>

Prague 7, Holešovice, U Uranie

