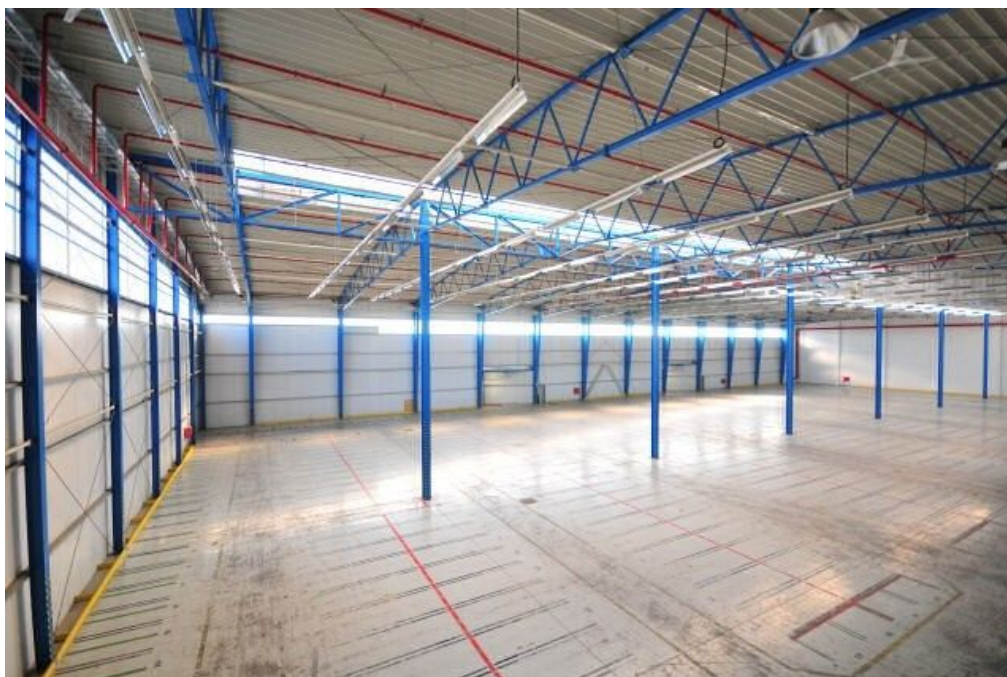


Industrial space

Ask for price

2 086 m², Praha-západ, Kněževy, Nad Kovárnou



Industrial space

Ask for price

2 086 m², Praha-západ, Kněževy, Nad Kovárnou

Total area	2 086 m ²
Available area for rent	2 086 m ²
Ceiling height	9.75 m
Floor loading capacity	5 t/m ²
Column grid structure	—
Structure	Reinforced concrete structure
PENB	G
Reference number	104107

2,086 sq.m. industrial and office space for lease in Prague-west. The premises are suitable for logistics and distribution centers and can be designed based on specific requests and requirements.

Location:

The park is situated in Kněževy, in Prague-west, close to the D7 highway, in close vicinity of the international Václav Havel Airport Prague. Good public transport, bus stops close to the park.

Features and Services:

- Flexible units (storage / office / light production / showroom)
- Onsite property management
- Park maintenance
- Public parking

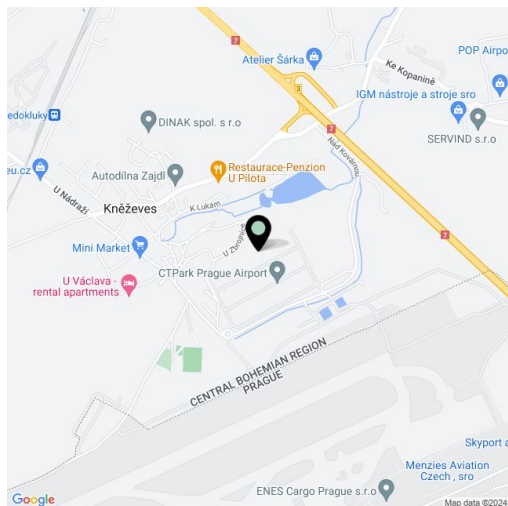
Storage/Industrial space:

- Floor loading capacity 5 T/sq.m
- Clear height 9,75 m
- Loading docks 1/600 sq.m
- Min. 1 directly entry to the unit
- Column grid structure 24x12 m
- LED light
- ESFR sprinkler system
- Utility connections (water, sewage, gas, electricity)

Office:

- Office space according to the client's requirements
- Air-conditioning

Lessee pays no commission.



2 086 m², Praha-západ, Kněževes, Nad Kovárnou

