

Apartment Studio (1+kk)

Rented

29.2 m², Prague 5, Smíchov, U Lihovaru

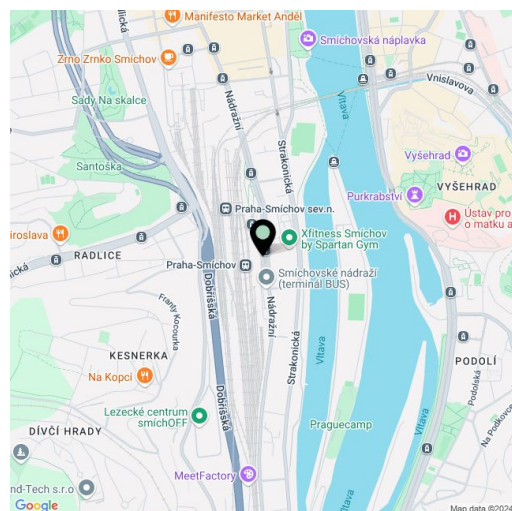


Apartment Studio (1+kk)

Rented

29.2 m², Prague 5, Smíchov, U Lihovaru

Total area	32 m ²
Floor area*	29 m ²
Balcony	3 m ²
Parking	Garage parking
Garage	Yes
Cellar	Yes
Service price	Monthly deposit for service charges and utilities is billed separately.
PENB	B
Reference number	103863
Available from	Immediately



* Area of the unit according to the Civil Code. The area consists of the sum total area of the entire unit bounded by perimeter walls.

Apartment in the new LIHOVAR residential district designed by the Black n'Arch atelier. This completely furnished studio apartment with a balcony is situated on the 6th floor of a residential complex with underground parking and green roofs, in the new Smíchov Riverside area just steps from the left bank of the Vltava river, Císařská louka, Podolí, or the nearby Dívčí hrady and Děvín. The project is shaped by the industrial heritage of Smíchov and the original refinery boasting preserved original features such as the Erektus chimney and the Distillery. Inspirational amenities include a food market, a gym, Czech Photo Gallery, David Černý's Musoleum art gallery, street art, and Křištof Kintera's Garden of Lights. Set within easy reach of good amenities, a kindergarten, primary and grammar schools, as well as numerous sports and outdoor activities - Císařská louka Golf, Podolí tennis and swimming, bike paths along the river. With great transport accessibility, the project is located a short tram stop from the Smíchovské nádraží metro station, line B, and has easy connections to the D1 highway to Brno, the D5 motorway to Plzeň and the Václav Havel airport.

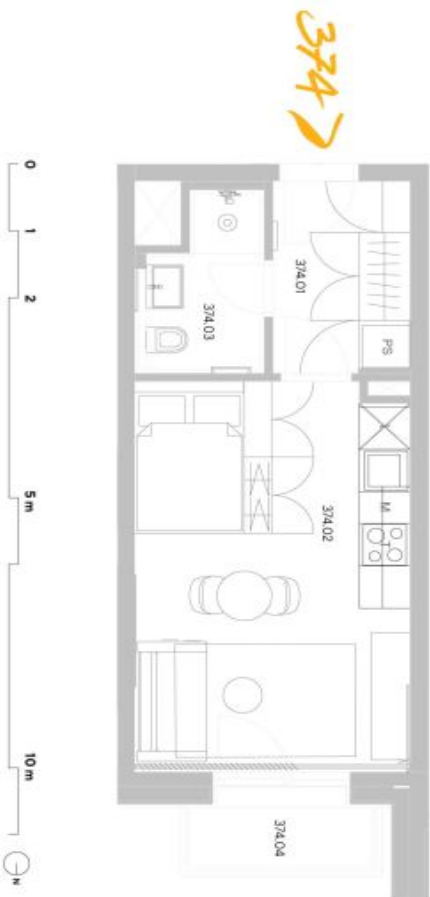
The interior features a living room/bedroom with a fully fitted open plan kitchen, a dining area, and access to the balcony, a bathroom with a walk-in shower and a toilet, and an entrance hall.

LOXONE smart home system, heat recovery ventilation, air-conditioning, vinyl floors, tiles, built-in wardrobes, central underfloor heating, washing machine, dishwasher, video entry phone, active Internet connection, camera system, elevator. A **garage parking** space is available at CZK 2,500/month + VAT. A **cellar** is available at an additional fee. Building amenities also include a **reception**, plus property management and on-site facility management services.

Apartment Studio (1+kk)

29.2 m², Prague 5, Smichov, U Lihovaru

Rented



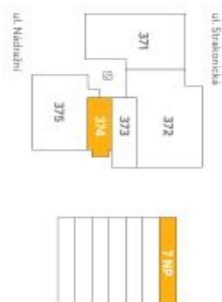
Exkluzivní zastoupení pro pronájem bytů
Eva Jilková, +420 257 328 281, +420 724 551 238, info@lhovar.cz

svoboda&williams | CHRISTIE'S
INTERNATIONAL REAL ESTATE

Všechny informace (vizualizace, grafická zobrazení, obstarávané popisy) uvedené na této stránce jsou pouze informativní povahy a nejsou právními předpisy. Realizace stavby projektu nebo bytů. Představitel pouze orientaci zobrazení. Svéře může v budoucnu podléhat změnám. Závazným podkladem realizace je projektová výkresová část s přílohou dokumentace. Více informací k této stránce bytů a jednotlivým detailům na www.lhovar.cz/realizace nebo 20240213

lhovar.cz

byt 1+KK
29,20 m²
7.NP - S



umístění na podlaží



přehled ploch

číslo	název	rozloha (v m ²)
374.01	Zobčívání	4,80
374.02	Pokoje s kuchyňským koutkem	19,20
374.03	Koupelna + WC	3,40
obývací plocha jednotky		27,40

374.X	Svlekové konstrukce	1,80
podlahová plocha jednotky		29,20

příslušenství	rozloha (v m ²)	
374.04	Balkon	2,70

energetický štítek B - velmi úsporná

