

Apartment Three-bedroom (4+kk)

Rented

129.5 m², Prague 5, Smíchov, U Lihovaru

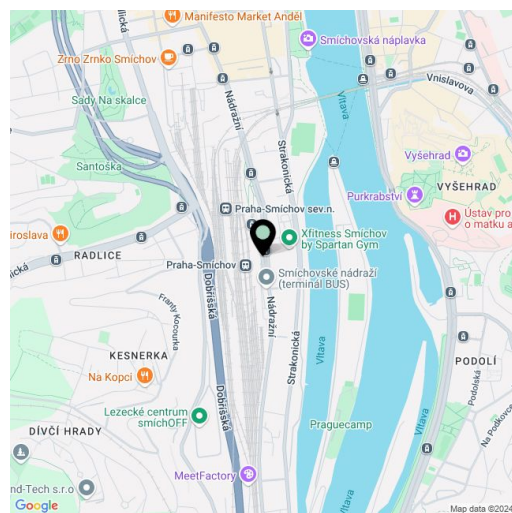


Apartment Three-bedroom (4+kk)

Rented

129.5 m², Prague 5, Smíchov, U Lihovaru

Total area	145 m ²
Floor area*	130 m ²
Terrace	2 m ²
Loggia	13 m ²
Parking	Garage parking
Garage	Yes
Cellar	Yes
Service price	Monthly deposit for service charges and utilities is billed separately.
PENB	B
Reference number	103848
Available from	Immediately



* Area of the unit according to the Civil Code. The area consists of the sum total area of the entire unit bounded by perimeter walls.

Brand new apartment in the new LIHOVAR residential district designed by the Black n'Arch atelier. This is a completely furnished 3-bedroom 2-bathroom apartment with an enclosed balcony and a terrace, situated on the 5th floor in a residential complex with underground parking and green roofs, in the new Smíchov Riverside area just steps from the left bank of the Vltava river, Císařská louka, Podolí, or the nearby Dívčí hrady and Děvín. The project is shaped by the industrial heritage of Smíchov and the original refinery boasting preserved original features such as the Erektus chimney and the Distillery. Inspirational amenities include a food market, a gym, Czech Photo Gallery, David Černý's Musoleum art gallery, street art, and Krištof Kintera's Garden of Lights. Set within easy reach of good amenities, a kindergarten, primary and grammar schools, as well as numerous sports and outdoor activities - Císařská louka Golf, Podolí tennis and swimming, bike paths along the river. With great transport accessibility, the project is located a short tram stop from the Smíchovské nádraží metro station, line B, and has easy connections to the D1 highway to Brno, the D5 motorway to Plzeň and the Václav Havel airport.

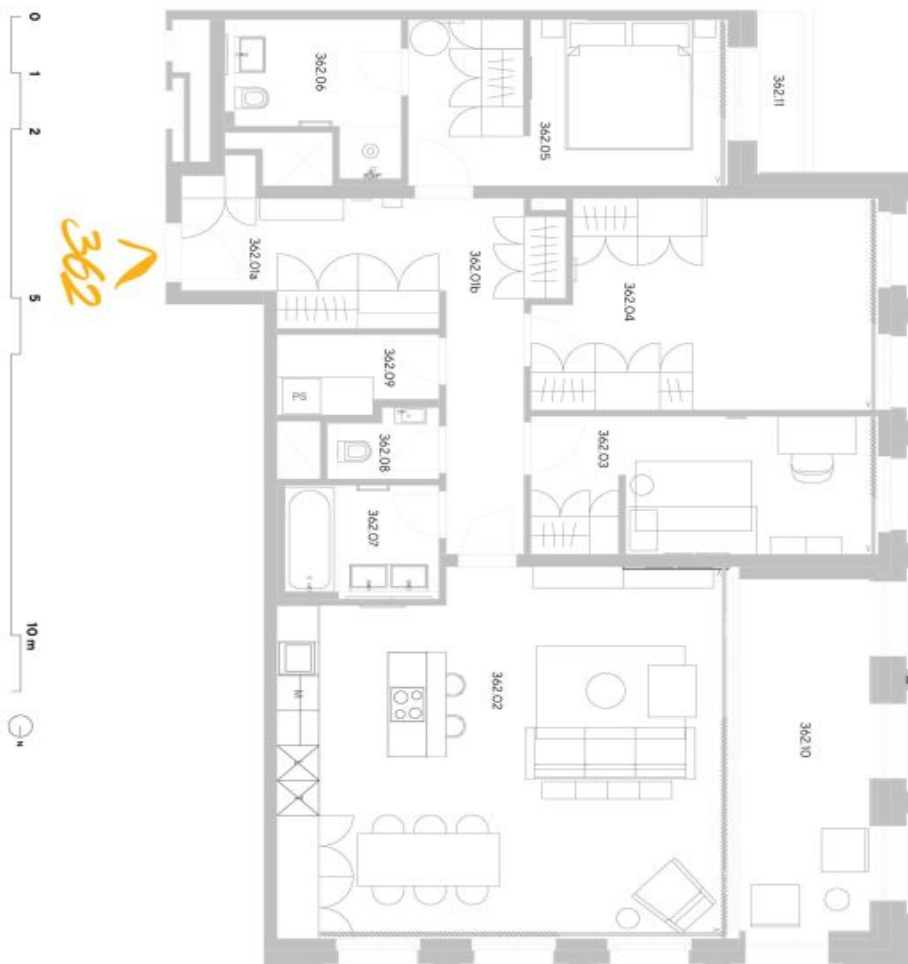
The interior features a living room with a fully fitted open plan kitchen, a dining area and access to the **enclosed balcony**, a master bedroom with a **walk-in closet**, a **terrace** and an en-suite bathroom with a walk-in shower and a toilet, two bedrooms, a bathroom with a bathtub, a separate toilet, a utility room, and an entrance hall.

LOXONE smart home system, **heat recovery ventilation**, vinyl floors, tiles, built-in wardrobes, central underfloor heating, washing machine, dishwasher, video entry phone, active Internet connection, camera system, lift. A **garage parking** space is available at CZK 2,500/month + VAT. A **cellar** is available at an additional fee. Building amenities also include a **reception**, plus property management and on-site facility management services.

Apartment Three-bedroom (4+kk)

Rented

129.5 m², Prague 5, Smíchov, U Lihovaru

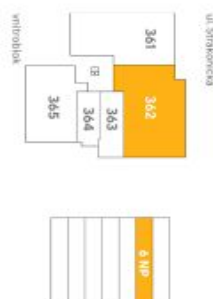


Exkluzivní zastoupení pro pronájem bytu
Eva Jilková, +420 257 328 281, +420 724 551 238, info@lihovar.cz

svoboda&williams | CHRISTIE'S
www.svoboda-williams.com

Všechny informace (vizualizace, grafická zobrazení, obstarávané popisy) uvedené na této stránce jsou pouze informativní povahy a nejsou právní předpisem. Realizace stavby projektu nebo bytu, Představitel pouze orientaci zobrazení. Svému názvu v budoucnu podléhat zánikem. Závazným podléháním realizace je poskytnutí výhradní právní dokumentace. Více informací k této stránce bytu a jednotlivým detailům na www.lihovar.cz/realizace nebo 20240213

byt 4+KK
129,50 m²
6 .NP - SZ



umístění na podlaží



přehled ploch

titule	rozloha (v m ²)
362.01a Zábavení	3,00
362.01b Chodba	14,00
362.02 Pokoj & kuchyňským koutkem	42,90
362.03 Pokoj	12,50
362.04 Pokoj	18,30
362.05 Pokoj	14,10
362.06 koupelna - WC	5,60
362.07 koupelna	4,30
362.08 WC	1,70
362.10 komora	3,20
obývací plocha jednotky	119,60

362.X Svislé konstrukce
podlahová plocha jednotky 129,50

přidělení

362.11 Lodižka	13,30
362.12 Terasa	2,20

energetický štítek B - velmi úsporná

