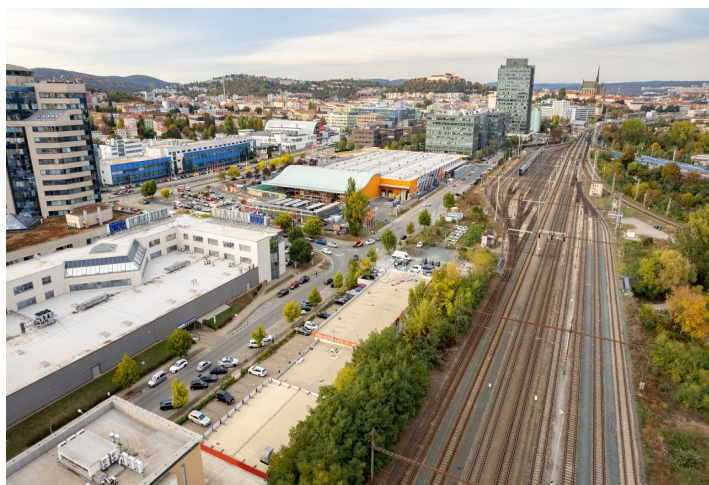
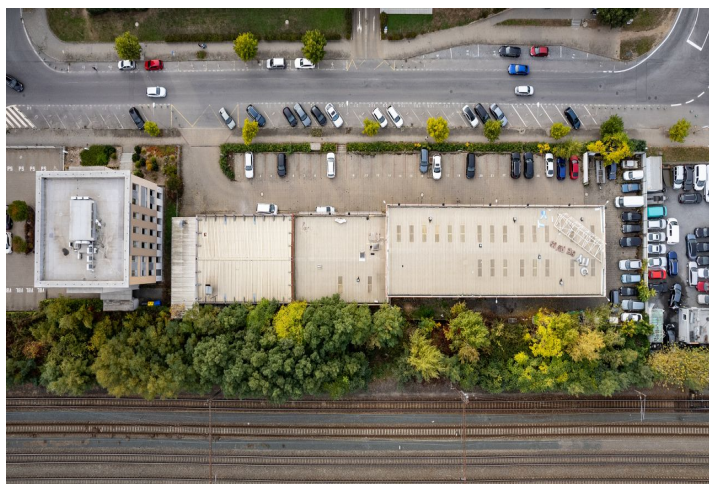


Land

Ask for price

3 309 m<sup>2</sup>, Brno-město, Štýřice, Pražákova



## Land

Ask for price

3 309 m<sup>2</sup>, Brno-město, Štýřice, Pražákova

Price per sq. m.	Ask for price
Total area	3 309 m <sup>2</sup>
Land type	Commercial
Reference number	103717

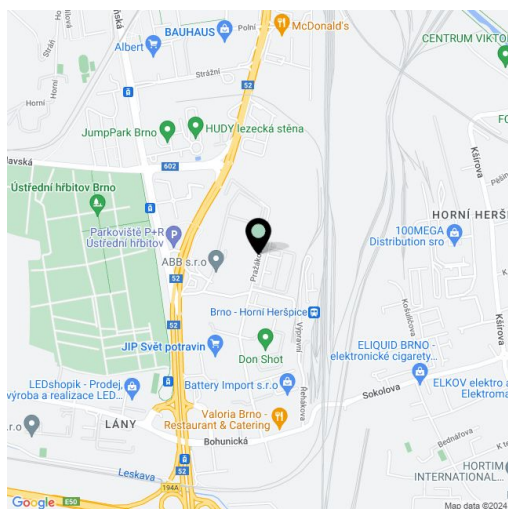
**A plot of land suitable for development in the Štýřice district of Brno. The offer includes a showroom project with a valid building permit and a study of a multifunctional building.**

There is now a functioning car repair shop on the property with revenue and adjacent asphalt areas serving as a parking lot. **All utilities** are connected to the plot, access is via an asphalt road.

The area is located in the **commercial zone** between Heršpická Street and the railway line, near the **AZ Tower** building and the **Spielberk office center area**, **all infrastructure** including public transport bus stops are nearby.

An authoritatively issued building permit for the construction of a showroom allows the investor to start construction immediately.

Total area 3,309 m<sup>2</sup>.



3 309 m<sup>2</sup>, Brno-město, Štýřice, Pražákova



Land

Ask for price

3 309 m<sup>2</sup>, Brno-město, Štýřice, Pražákova

