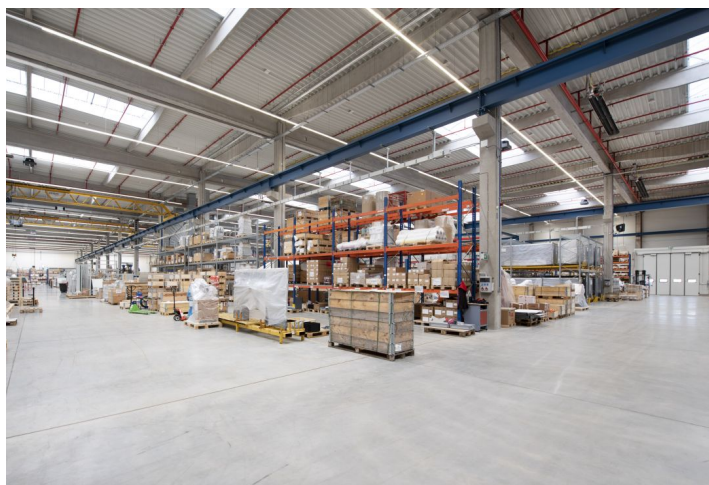




Industrial space

10 217 m², Nový Jičín, Mošnov, Průmyslová

Ask for price





Industrial space

10 217 m², Nový Jičín, Mošnov, Průmyslová

Ask for price

Total area	10 217 m ²
Available area for rent	10 217 m ²
Ceiling height	10 m
Floor loading capacity	7 t/m ²
Column grid structure	—
Structure	Reinforced concrete structure
PENB	B
Reference number	103643

10,217 sq.m. of industrial, warehouse space for lease near the international airport. The premises are suitable for logistics and light manufacturing. The area allows a combination of road and rail transport with a container terminal with connection to air transport. Available from 8 months after signing the contract. Possibility of construction into ownership.

Location:

The park is located south of Ostrava near the Leoš Janáček International Airport with excellent traffic access to the D1 motorway.

Facilities and services:

- Flexible units (warehouse / office / light manufacturing)
- Onsite property management
- 24/7 security service and CCTV
- Park maintenance
- Parking places
- High standard of building

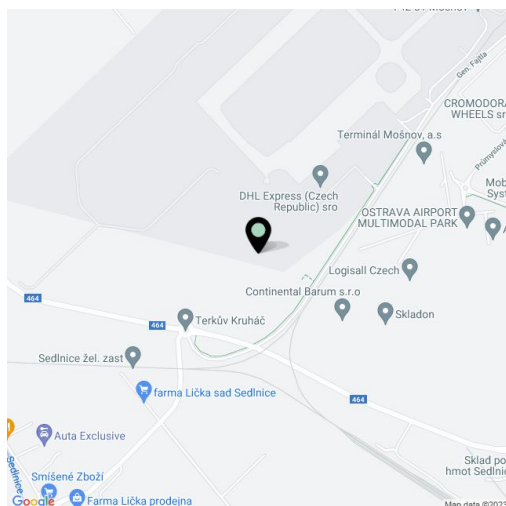
Warehouse/industrial space:

- 10 x hydraulic ramps
- 1 x drive ins
- Dimension of entrance door (drive-in) 4x4,5 m
- Floor loading capacity 7 t/sq.m.
- Clear height 10 m
- Column grid structure 12x24 m
- LED lighting 150 Lux
- Sprinkler system

Offices:

- Office space according to client requirements
- LED lighting 500 Lux

Tenant does not pay commission.

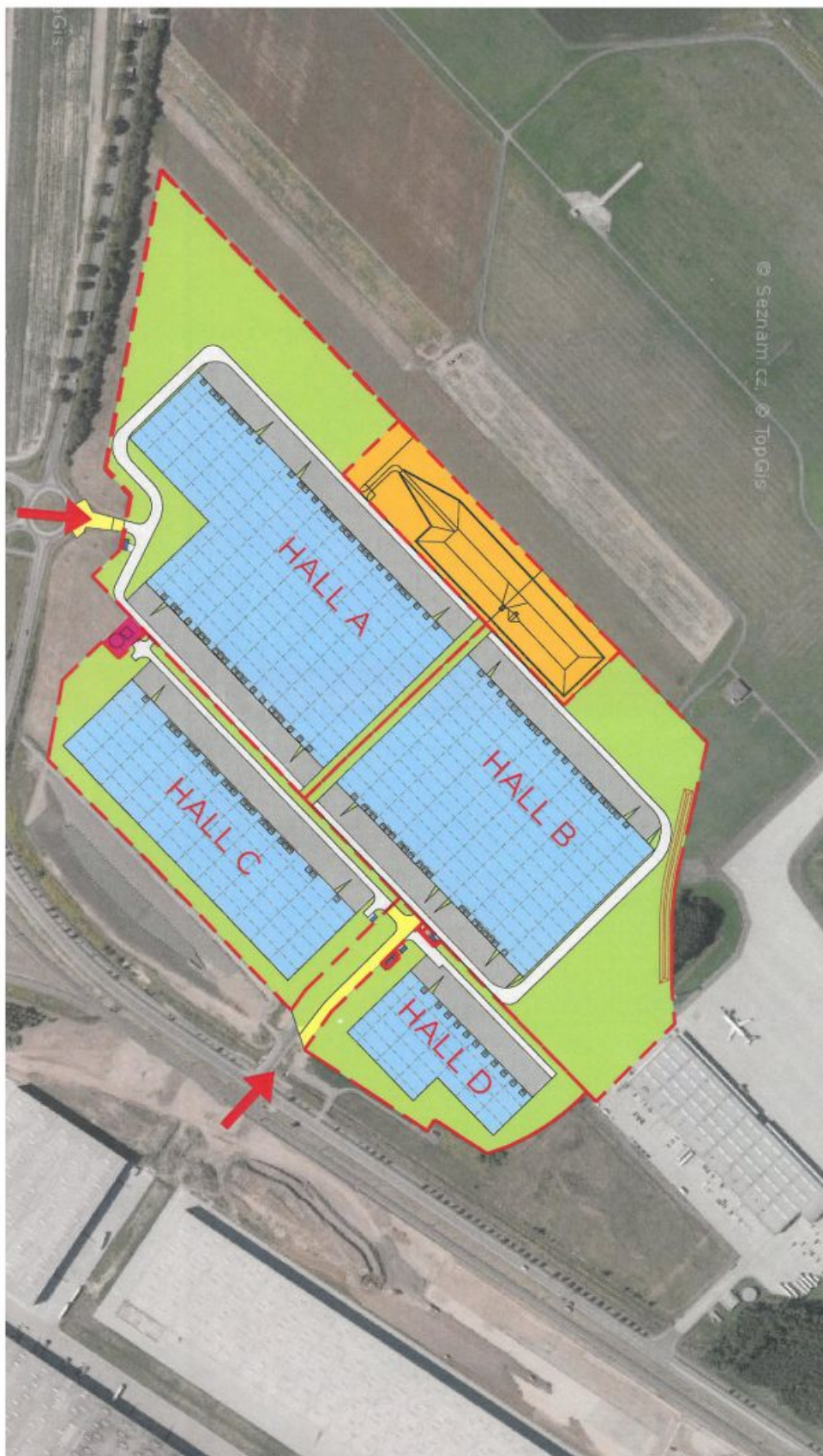
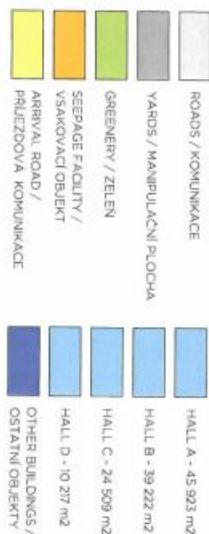




Industrial space

Ask for price

10 217 m², Nový Jičín, Mošnov, Průmyslová





10 217 m², Nový Jičín, Mošnov, Průmyslová

