

## Apartment Two-bedroom (3+1)

Sold

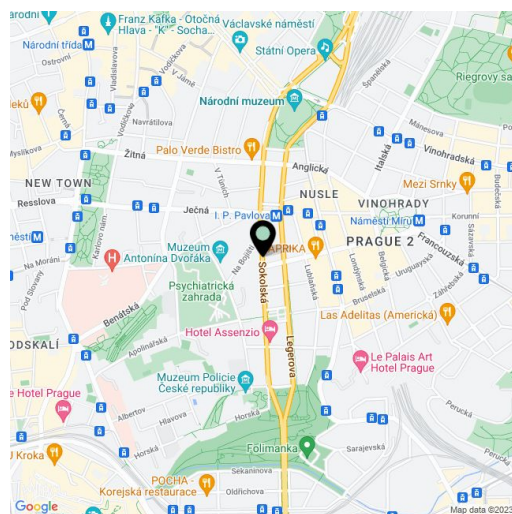
91 m<sup>2</sup>, Prague 2, Vinohrady, Rumunská



# Apartment Two-bedroom (3+1)

**Sold**91 m<sup>2</sup>, Prague 2, Vinohrady, Rumunská

Total area	91 m <sup>2</sup>
Parking	-
Cellar	Yes
PENB	G
Reference number	103502



\* Area of the unit according to the Civil Code. The area consists of the sum total area of the entire unit bounded by perimeter walls.

This sunny and airy corner apartment with high ceilings is located on the 4th floor of a renovated apartment building with an elevator. The building is situated in a popular residential part of Vinohrady between Tylovo and Míru squares, at a convenient distance from a tram stop and metro stations.

The layout offers a corner living room connected by sliding doors to the kitchen and dining room, as well as 2 bedrooms, a bathroom (with a bathtub), a separate toilet, a closet, and an entrance hall. The bathroom is accessible from both the hall and the master bedroom.

The elegant apartment has been sensitively renovated. Floors are hardwood wooden parquet and tiled; windows are original wooden casement. Facilities include built-in wardrobes, a complete kitchen with Bosch appliances, and a security system with an alarm. Heating is provided by a gas boiler. The apartment comes with a cellar storage unit, and the building is equipped with a camera system and a chip-accessed entrance.

This prestigious area in the wider city center is within easy reach of everything you need. The neighborhood is full of shops, restaurants, cafes, clubs, and theaters, and excellent transport accessibility is ensured by trams and metro stations (lines A and C, and in the future also the new D line). The Kateřinská Garden and Folimanka or Grébovka parks are also nearby.

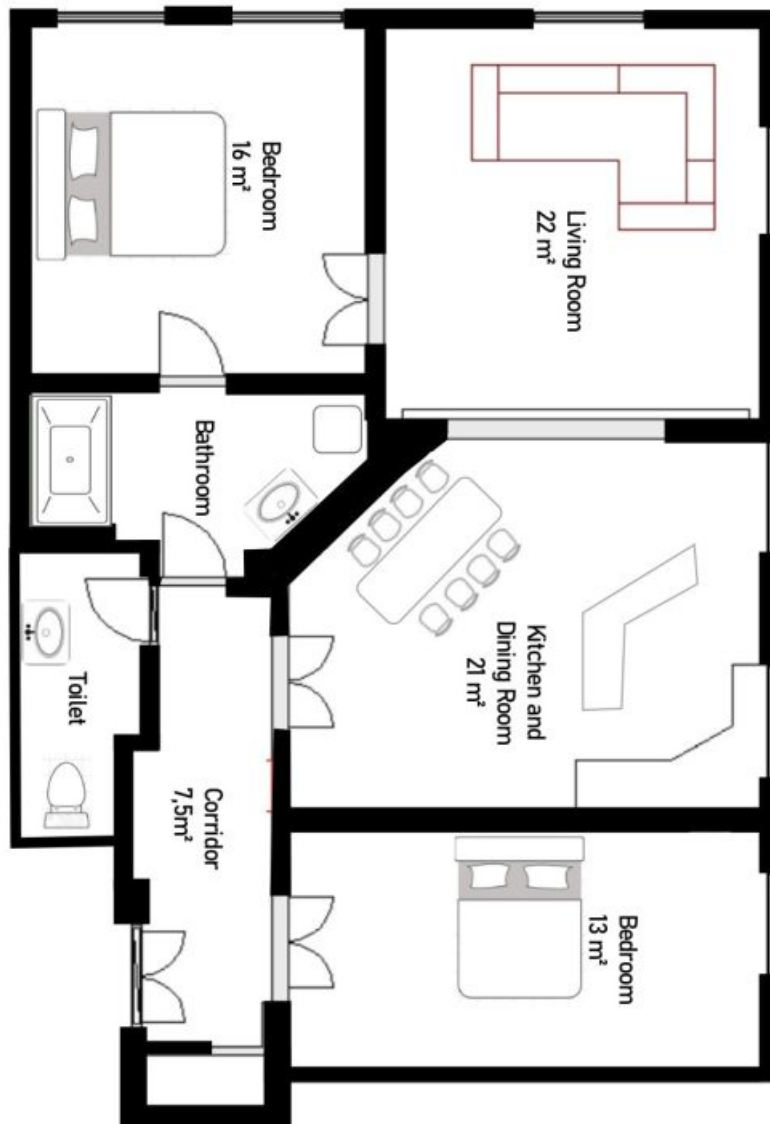
Floor area 91 m<sup>2</sup>.

Rented at market price until July 31st, 2024.

## Apartment Two-bedroom (3+1)

Sold

91 m<sup>2</sup>, Prague 2, Vinohrady, Rumunská



Flat Plan