

House Four-bedroom (5+kk)

Rented

244 m², Prague 5, Stodůlky, K Fialce



House Four-bedroom (5+kk)

Rented

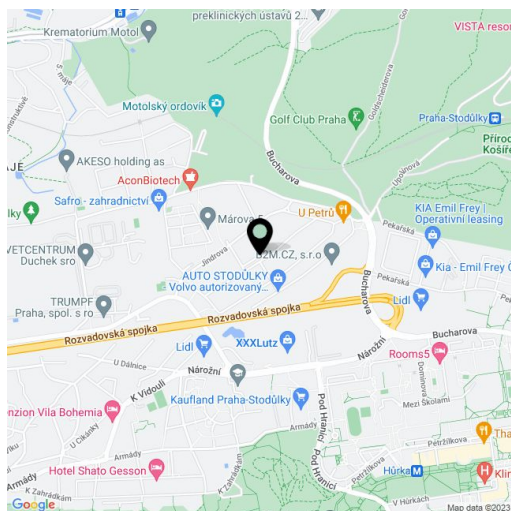
244 m², Prague 5, Stodůlky, K Fialce

| | |
|------------------|----------------------------------|
| Total area | 244 m ² |
| Plot | 730 m ² |
| Foot print | 145 m ² |
| Garden | 585 m ² |
| Floor area | 240 m ² |
| Balcony | 4 m ² |
| Parking | Parking on the plot. |
| Cellar | Yes |
| Service price | Utilities are billed separately. |
| PENB | G |
| Reference number | 103408 |
| Available from | Immediately |

This completely refurbished freestanding house for rent with a landscaped mature garden is on a one-way street in a residential area of Prague 13 - Stodůlky. This quiet residential neighborhood is located below Vidoule Hill, which is part of the large Košíře-Motol Nature Park. There are basic amenities available within a short driving distance, and a golf club with a nine-hole course is also close-by. The Motol (line A) and Hůrka (line B) metro stations are just 5 minutes away by bus. The nearby Rozvadovská connecting road speeds up traveling by car.

The ground floor includes a living room with a fully fitted kitchen and dining area, a guest bedroom/study, a bathroom (walk-in shower, toilet), a utility/server room, a hall, and an entrance hall. The upper floor features a bedroom with a **balcony**, a second bedroom, a small bedroom, a bathroom (bathtub, toilet), and a laundry/storage room. There is a basement floor with three large storage rooms and a utility area.

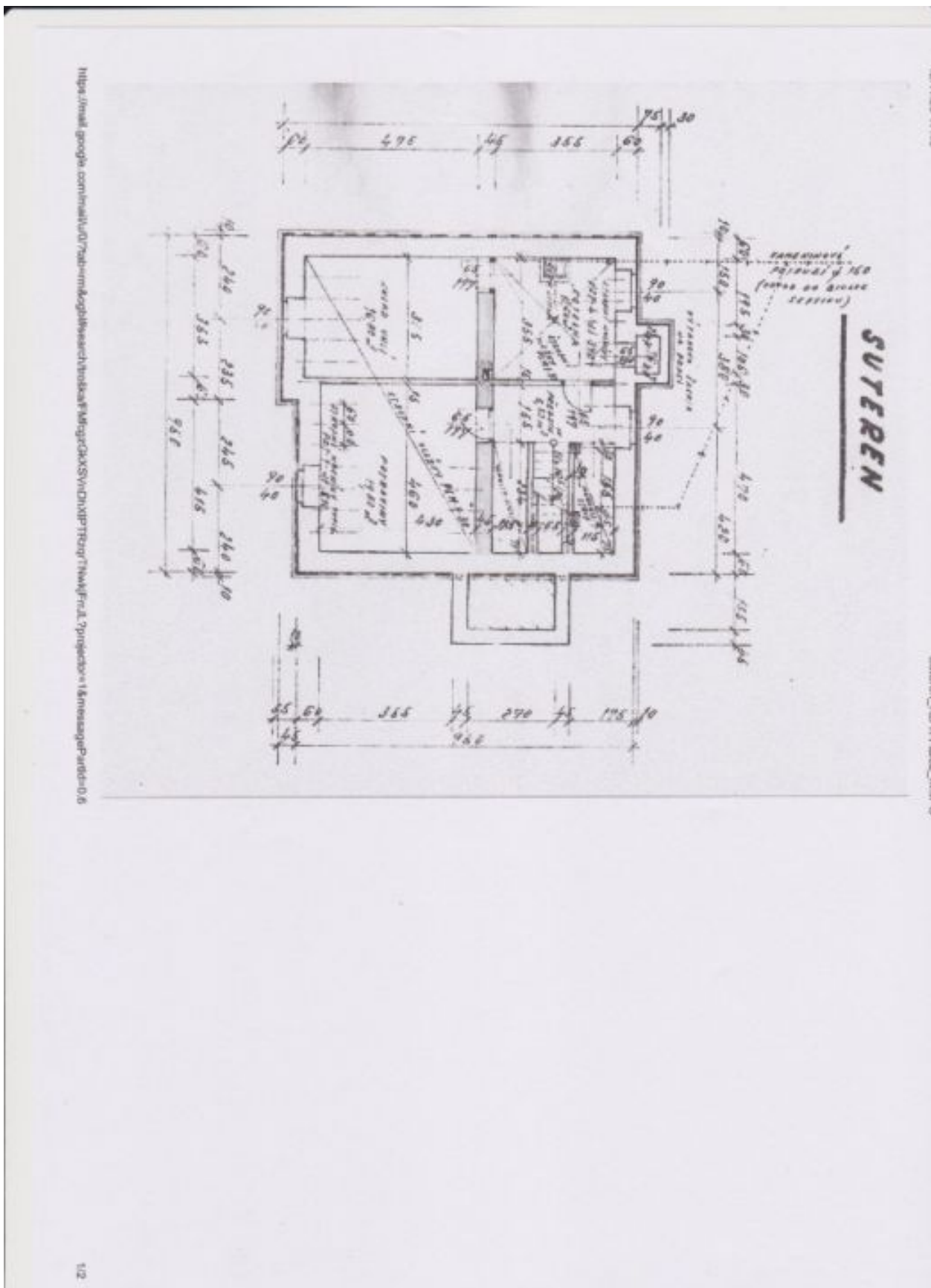
Hardwood parquet floors, tiles, original **terazzo** floor on the staircase, large windows, new gas boiler, dishwasher, induction cooktop, garden house. A **parking space** on the plot is available.



House Four-bedroom (5+kk)

Rented

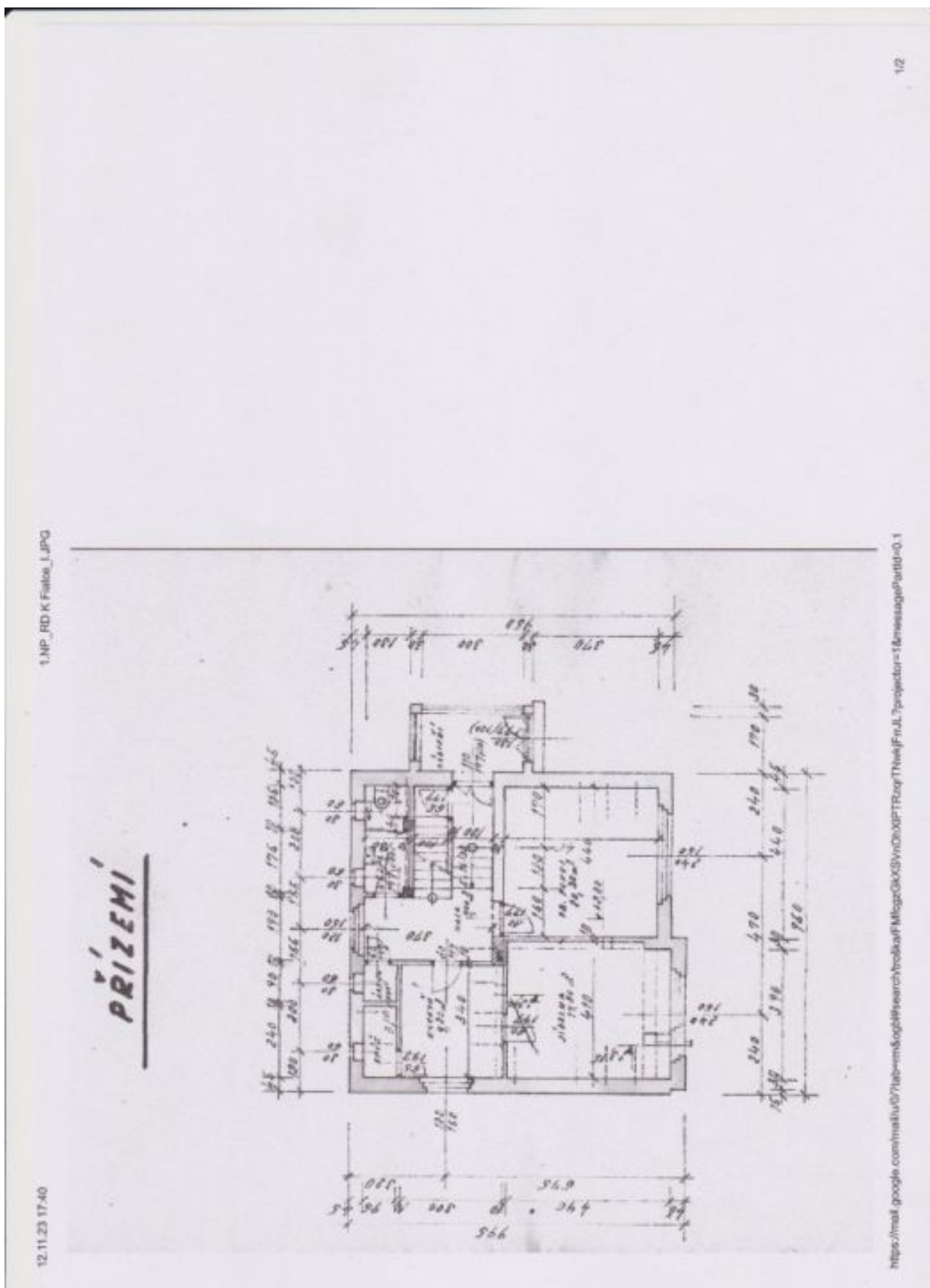
244 m², Prague 5, Stodůlky, K Fialce



House Four-bedroom (5+kk)

Rented

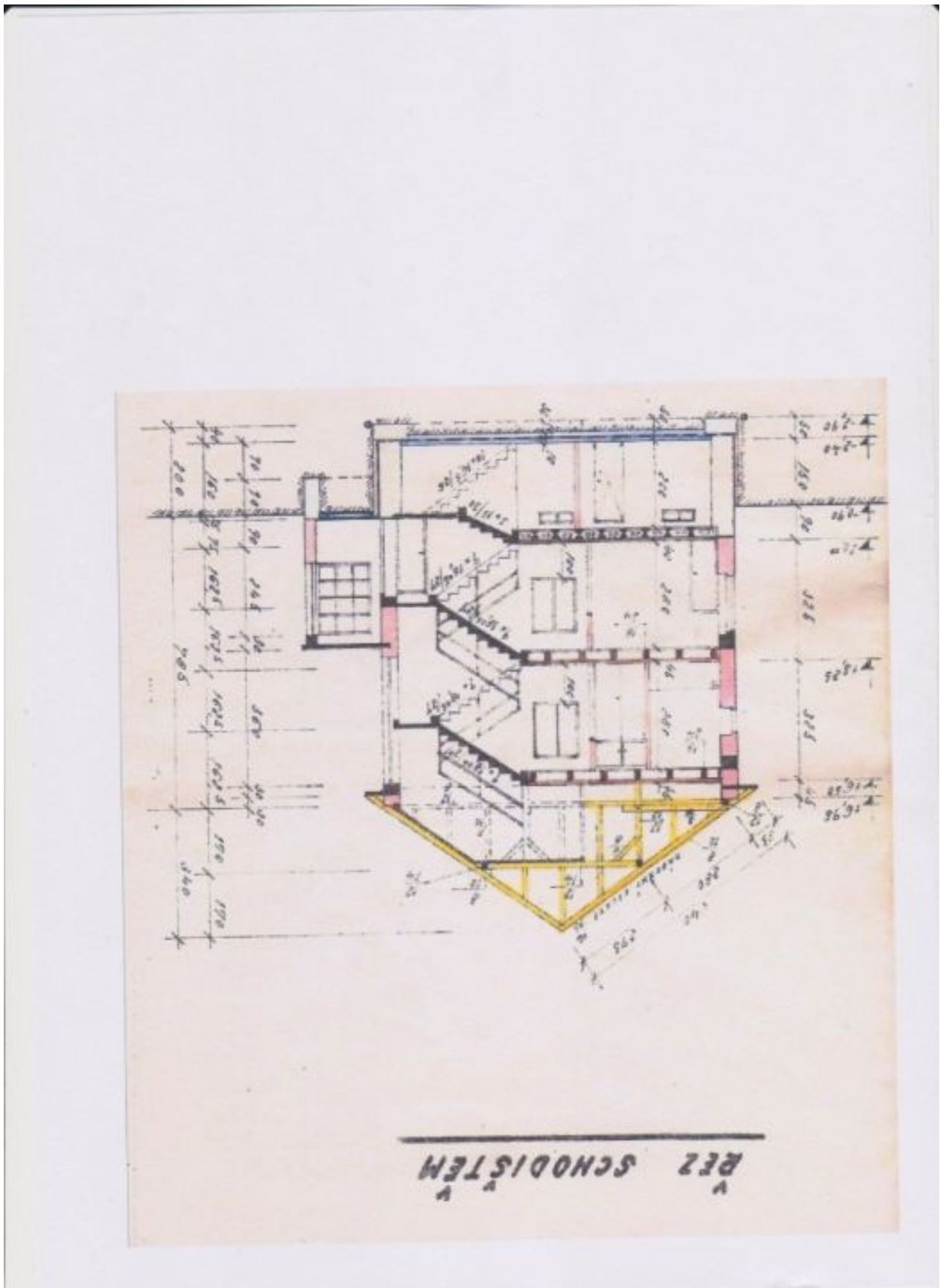
244 m², Prague 5, Stodůlky, K Fialce



House Four-bedroom (5+kk)

Rented

244 m², Prague 5, Stodůlky, K Fialce



House Four-bedroom (5+kk)

Rented

244 m², Prague 5, Stodůlky, K Fialce

