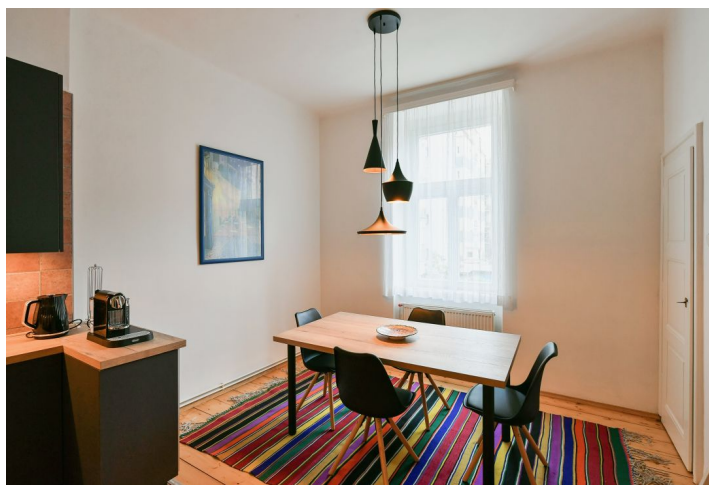
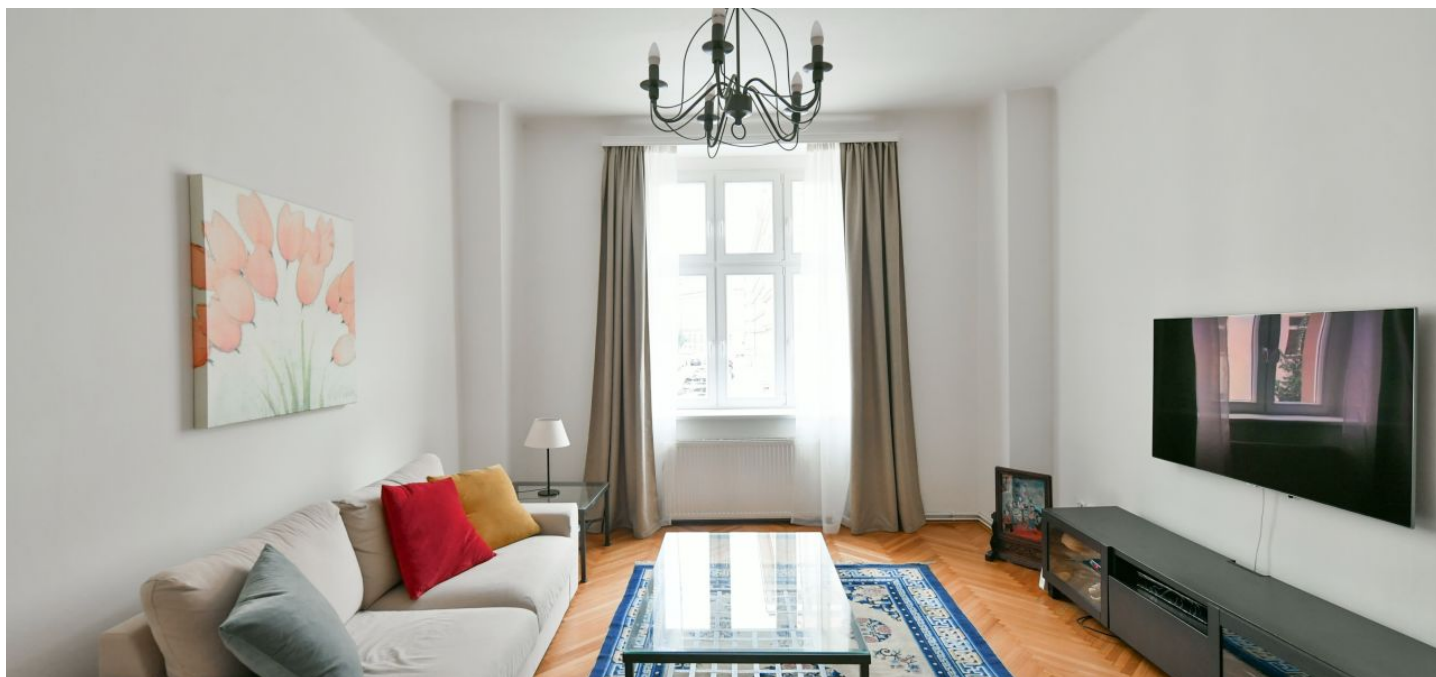


Apartment One-bedroom (2+1)

Rented

93 m², Prague 6, Bubeneč, dr. Zikmunda Wintra



Apartment One-bedroom (2+1)

Rented

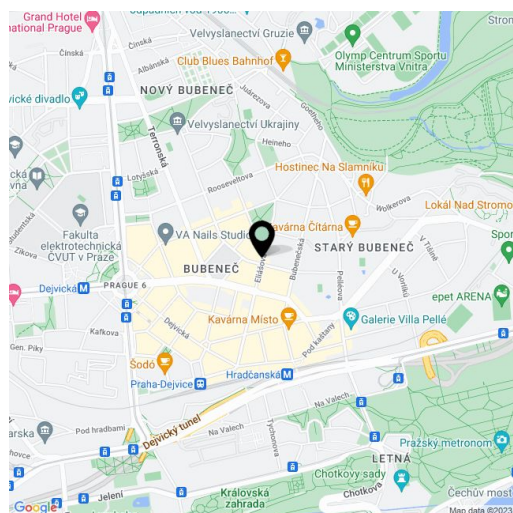
93 m², Prague 6, Bubeneč, dr. Zikmunda Wintra

Total area	97 m ²
Floor area*	93 m ²
Balcony	4 m ²
Parking	-
Cellar	-
Service price	Monthly deposit for services and water: CZK 1,000/person. Electricity and gas are billed separately (transferred to the tenant).
PENB	G
Reference number	103333
Available from	Immediately

This furnished, renovated apartment with a balcony is on the 1st floor of a well-maintained residential building on a quiet tree-lined street in the embassy district of Bubeneč, Prague 6. A sought-after location with very quick access to the city center (Hradčanská metro station is a few min. walk away) and the airport, convenient to the ISP, Park Lane, and Riverside international schools. An area with full amenities within quick reach, and within walking distance of the Prague Castle and two large Prague parks: Stromovka and Letná.

The apartment includes a living room, a fully fitted kitchen with a dining area and a pantry, a bedroom, a fitted **walk-in closet**/storage room, a bathroom with a bathtub, a separate toilet, and a bright spacious entrance hall with a **balcony** facing the courtyard.

Newly renovated **hardwood parquet and plank floors**, tiles, new windows, gas boiler, washing machine, dishwasher, microwave oven, coffee maker, vacuum cleaner, TV. No elevator.



* Size of the unit according to the Housing Act. The area consists of the sum total of the internal area of every room.