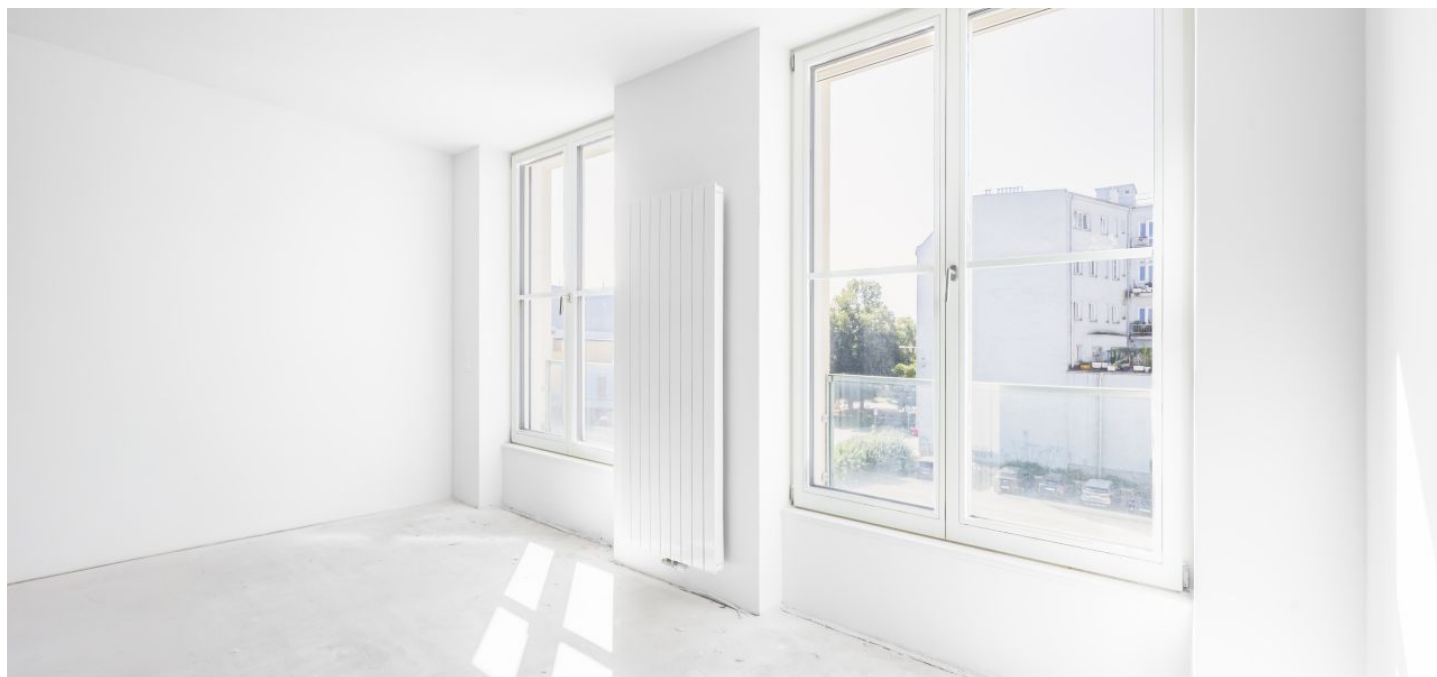


Apartment Two-bedroom (3+kk)

€ 338 705 | CZK 8 455 760

87.5 m², Ostrava-město, Moravská Ostrava, Masarykovo náměstí



Apartment Two-bedroom (3+kk)

€ 338 705 | CZK 8 455 760

87.5 m², Ostrava-město, Moravská Ostrava, Masarykovo náměstí

Total area	100 m ²
Floor area*	88 m ²
Loggia	12 m ²
Parking	Parking space at an extra cost
Garage	Yes
Cellar	2 m ²
PENB	B
Reference number	103158

This bright apartment with a loggia and the possibility of purchasing a garage parking space is part of the unique Nové Lauby residential complex. This new project is being created right in the center of Ostrava near Masaryk Square with a fountain, within walking distance of a full range of services and a park.

The layout consists of a living room with a preparation for a kitchen, two bedrooms, a bathroom with a toilet, a separate guest toilet, and an entrance hall. **The apartment has a loggia.**

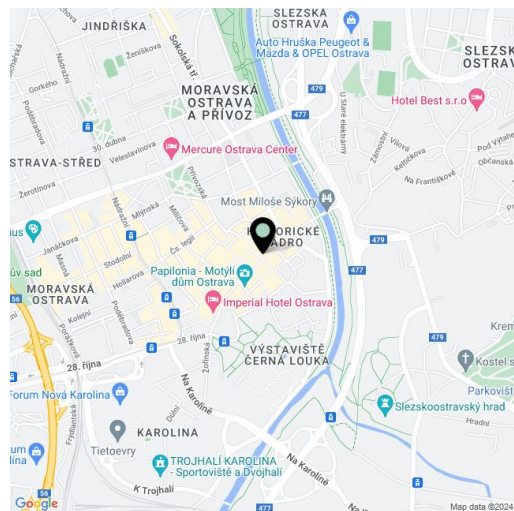
The project was designed by the renowned **znamení čtyř - architekti studio**. The new five-story building will be covered with **greenery**, and a **landscaped atrium** will be created in the complex's center. The interior is illuminated by large-format windows with aluminum or wooden frames and electrically controlled blinds. Floors will be three-layer **oak** combined with large-format Betonico tiles (60 × 60 cm). The standard facilities also include a **video intercom**. **There is a possibility to buy a parking space.**

The apartment complex will become a natural part of the historic center of Ostrava. In the area around Masaryk Square, you can enjoy cafes, restaurants, a shopping center, a museum, a cinema, or a library. Schools and the Antonín Dvořák Theater are a few minutes' walk away. Part of the city monument zone is the large park on Černá Louka and the Ostravice River is lined with bike paths.

Floor area 87.5 m², loggia 12 m², cellar 2.44 m².

For more information about the project, visit the website www.novelauby.cz

The presentation is using visualizations.



* Area of the unit according to the Civil Code. The area consists of the sum total area of the entire unit bounded by perimeter walls.

Apartment Two-bedroom (3+kk)

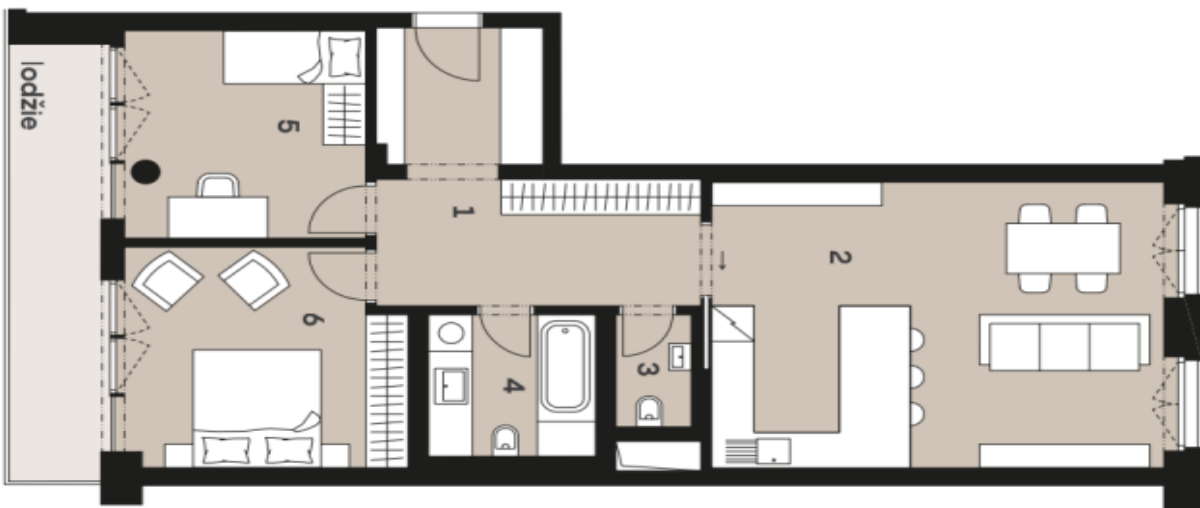
€ 338 705 | CZK 8 455 760

87.5 m², Ostrava-město, Moravská Ostrava, Masarykovo náměstí

Nové Lauby

Byt 3.D.05

Dispozice	3+kk	
Podlaží	2.NP	
Vstup z ulice	Dlouhá	
1	Hala	15,58 m ²
2	Obýv. pokoj s kuch. koutkem	31,53 m ²
3	WC	1,94 m ²
4	Koupelna s WC	5,64 m ²
5	Pokoj	11,92 m ²
6	Pokoj	14,30 m ²
Užitná plocha		80,91 m ²
Podlahová plocha		87,14 m ²
Lodžie		10,46 m ²



0 1m 2m 5m



Exkluzivní zastoupení
svoboda&williams | CHRISTIE'S
INTERNATIONAL REAL ESTATE

*Projekt Nové Lauby a vyhrazení pruhu na zeleň, včetně rozestavění a informací jsou pouze orientační. Součástí kopírování byly nové měřítka. Celková plocha bytu je včetně podlahy a vnitřních rozestavění. Více informací získáte na telefonním čísle 800 2013 50.

www.novelaubby.cz

info@novelaubby.cz
+420 724 551 238

