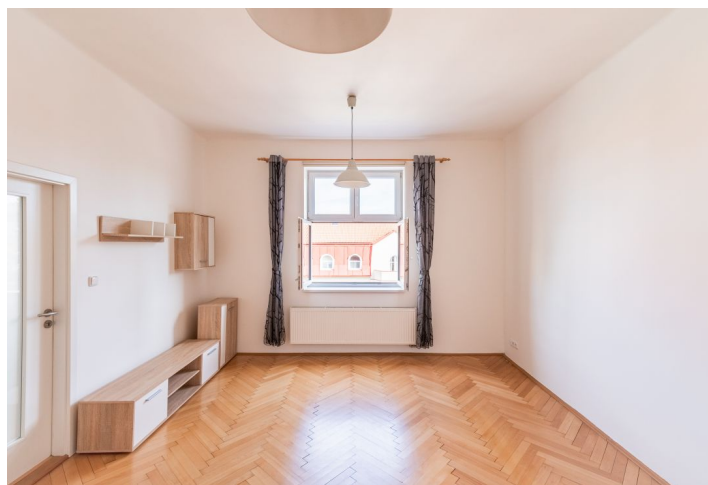


Apartment One-bedroom (2+kk)

Sold

48 m², Prague 4, Nusle, Pod Lázní



Apartment One-bedroom (2+kk)

Sold

48 m², Prague 4, Nusle, Pod Lázní

| | |
|------------------|--------|
| Total area | 48 m² |
| Parking | - |
| Cellar | Yes |
| PENB | G |
| Reference number | 102947 |

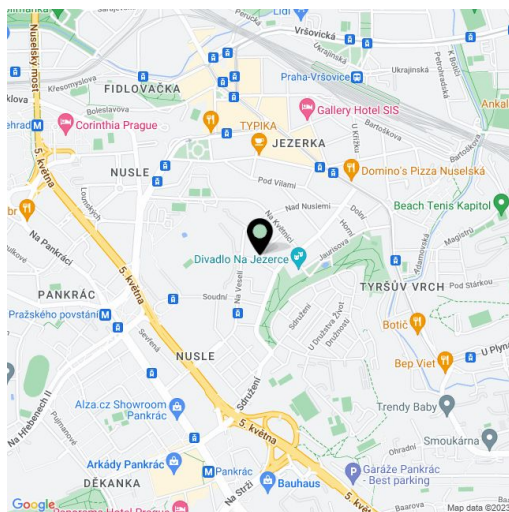
This bright apartment with an efficient layout is located on the 2nd floor of an apartment building set on a quiet side street right next to Jezerka Park, just a few steps from a tram stop and within walking distance of the Pankrác metro station.

The practical layout consists of a living room with a kitchen, a bedroom, a bathroom (with a bathtub), a separate toilet, and an entrance hall.

The apartment was renovated in 2013. Facilities include plastic windows and parquet and tiled floors. The kitchen is fully equipped; the bedroom has a built-in wardrobe. Heating is provided by a gas boiler. There is a **cellar** and a **common courtyard**. The building **does not have an elevator**.

An entrance to **Jezerka Park** with an **outdoor gym** and the **Na Jezerce Theater** is just 50 m from the building. There are many restaurants and shops nearby, and the large **Arkády Pankrác** shopping center is close as well. **Excellent transport accessibility** is ensured by bus and tram lines, the Pankrác metro station, which will be a transfer station between lines C and D, is about a 15-minute walk away.

Floor area 47.8 m².



* Size of the unit according to the Housing Act.
The area consists of the sum total of the internal area of every room.