

## Office building

Ask for price

1731 m<sup>2</sup>, Brno-město, Maloměřice, Hády



## Office building

Ask for price

1731 m<sup>2</sup>, Brno-město, Maloměřice, Hády

Tenant consumption	—
Parking	Yes
Parking service charges	—
Parking ratio	—
Certification	—
PENB	A
Reference number	102873

This commercial complex located in the Hády business center offers quality office space for lease as well as workshops, warehouses, and land with a total area of 19,000 sq. m. The building has a reception, 24-hour security, CCTV, air-conditioning with heating, and is wheelchair accessible. A large handling area allows for the entry and parking of cars and trucks. A training center can be leased in the basement of the building.

The office building offers a total of 3,601 sq. m for lease (ground floor to 4th floor). Each floor has its own kitchenette, storage room, and copy room. On the 4th floor, there is a possibility to use an outdoor terrace of 80 sq. m. There are also workshops of 920 sq. m, warehouses of 633 sq. m, and land of 13,145 sq. m.

**Location:**

Excellent transport accessibility by car and public transport. The Červený Písek bus stop is right in front of the complex. The city center is about 17 minutes away by car.

**Features and Services:**

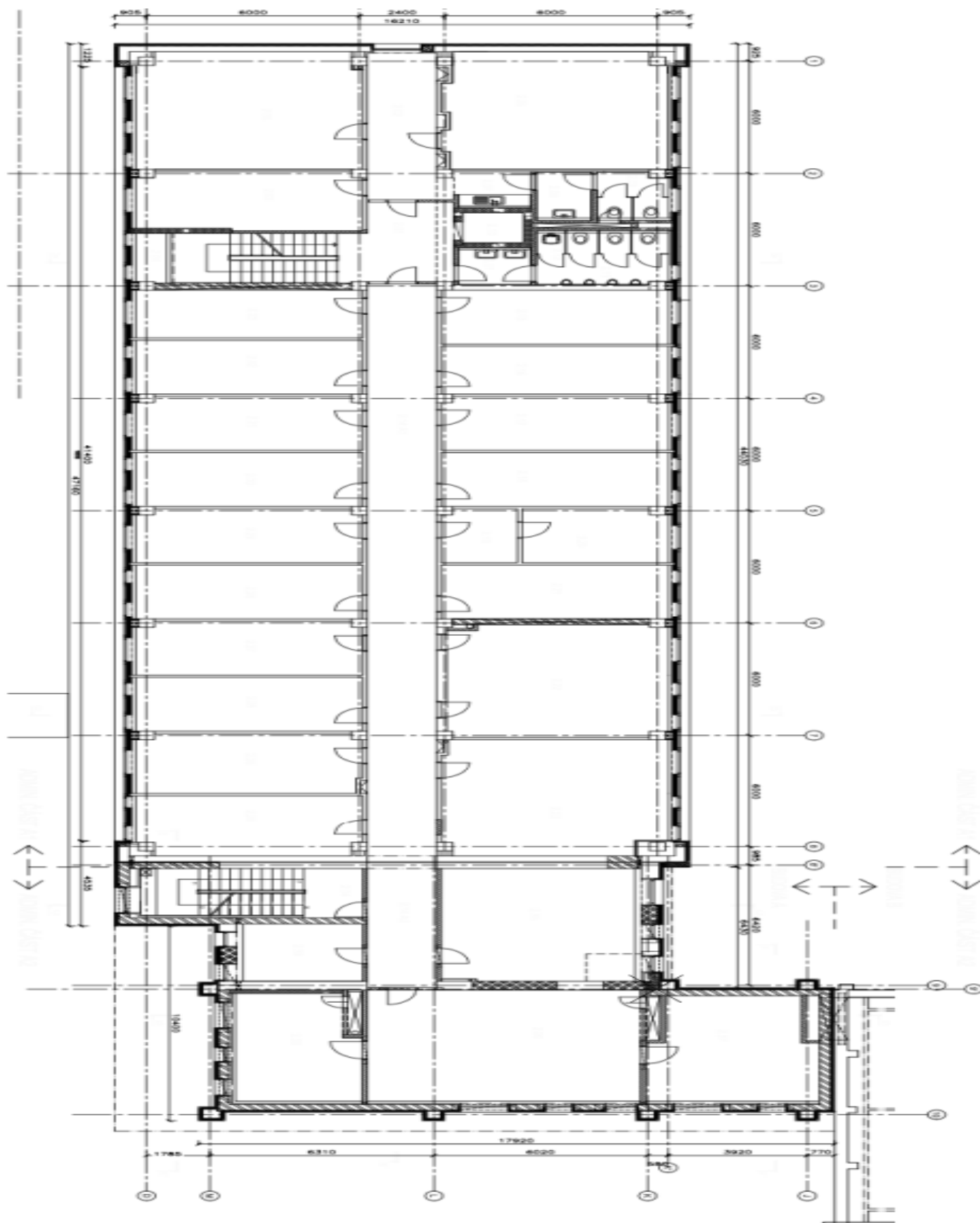
- Reception
- 24/7 security
- Camera system
- Air-conditioning
- Heating
- Wheelchair access
- Load-bearing carpets
- Exterior blinds
- LED energy saving lighting with dimmable lighting intensity control
- Fire detectors

Rental and service charges listed without VAT. Lessee pays no commission.

# Office building

Ask for price

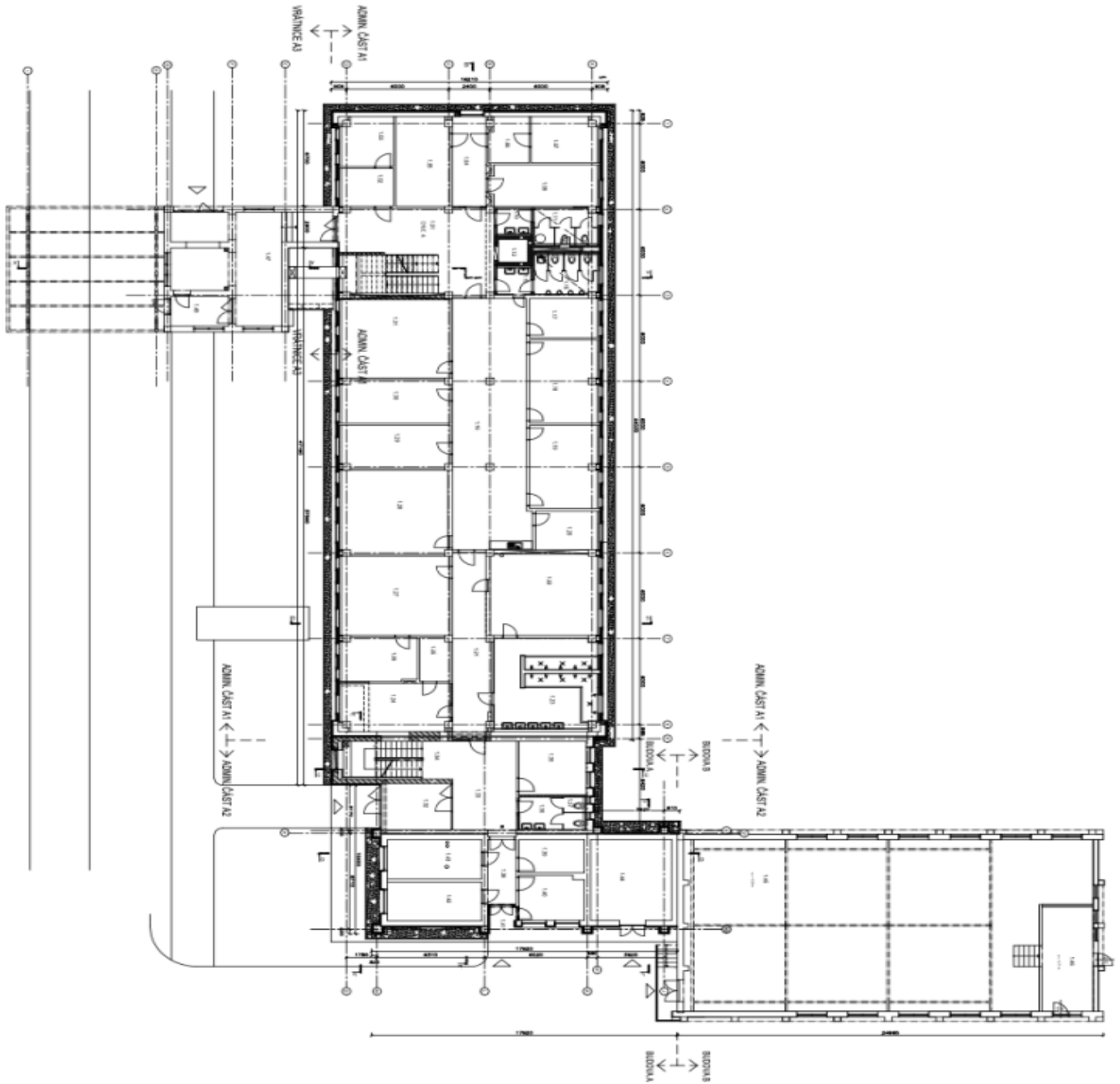
1731 m<sup>2</sup>, Brno-město, Maloměřice, Hády



# Office building

Ask for price

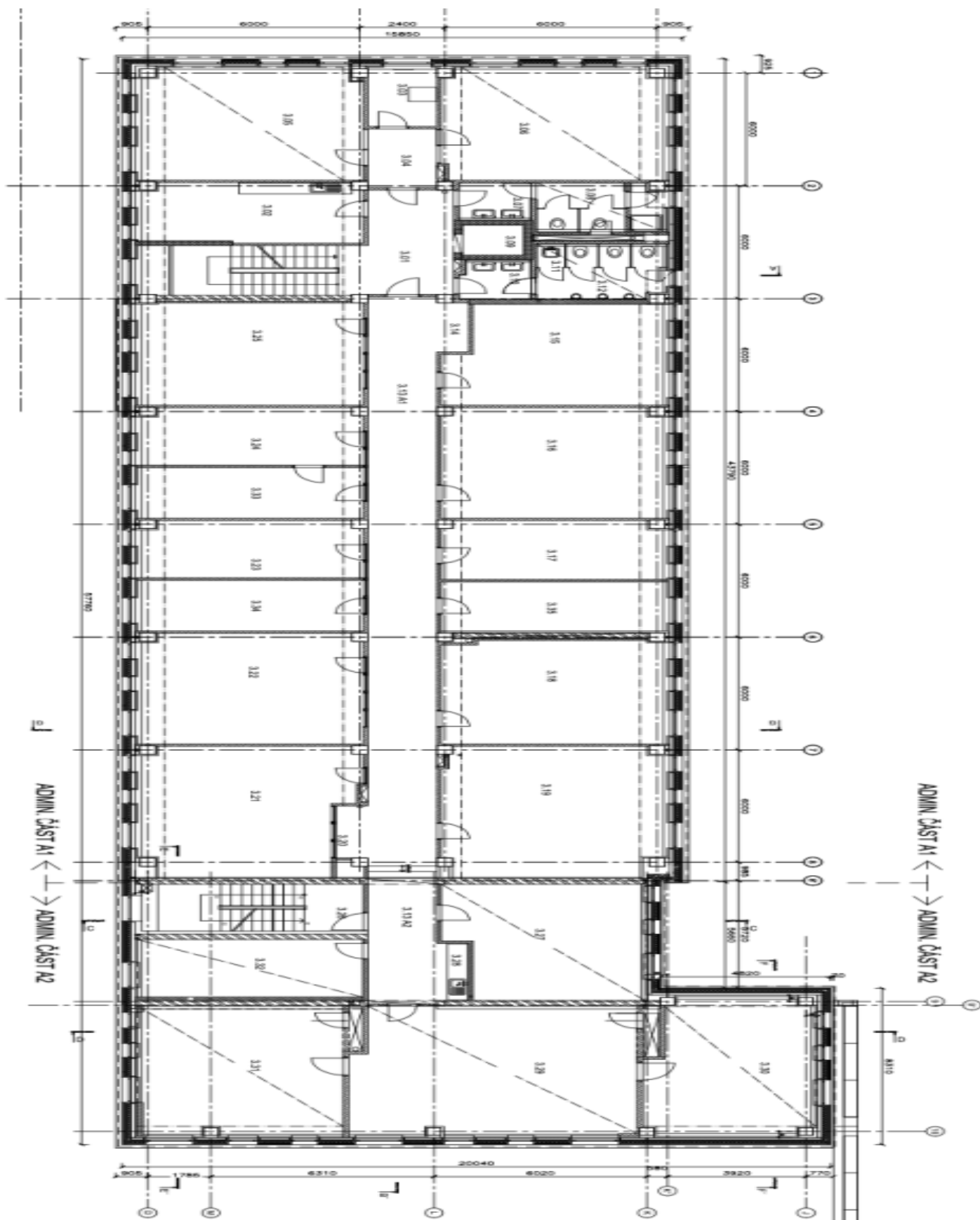
1731 m<sup>2</sup>, Brno-město, Maloměřice, Hády



Office building

Ask for price

1731 m<sup>2</sup>, Brno-město, Maloměřice, Hády



Office building

Ask for price

1731 m<sup>2</sup>, Brno-město, Maloměřice, Hády

