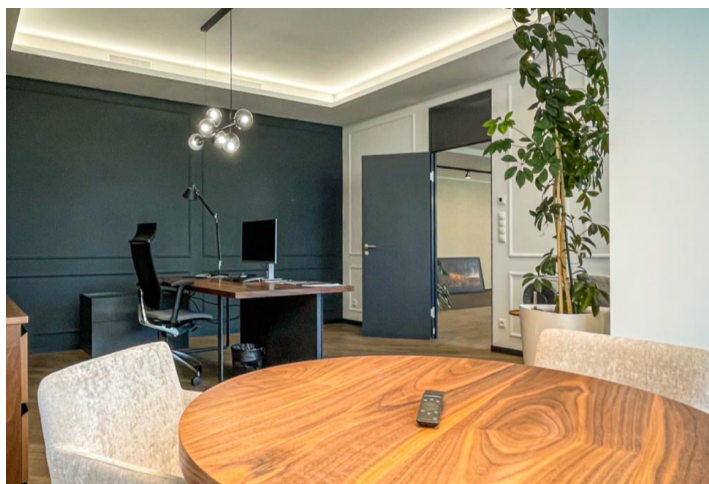


Office space

Ask for price

Prague 4, Michle, Vyskočilova



Office space

Ask for price

Prague 4, Michle, Vyskočilova

Available area	312 m ²
Cellar	-
Parking	Yes
PENB	G
Reference number	102797

Equipped office space for sublease on the 3rd floor in an administrative building situated in the business district of Prague 4, designed by Czech architect Jan Aulík. The seven-storey building offers more than 12,000 m² of high-quality office and retail space and ample underground parking.

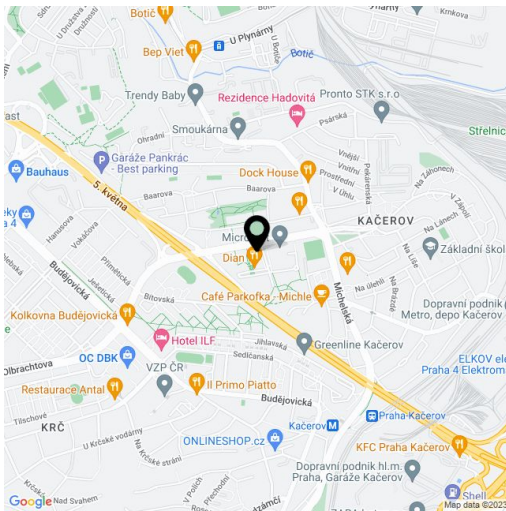
Location:

Very good accessibility by car and public transport – Budějovická and Kačerov metro stations (line C) are just 2 minutes by bus or 8 minutes on foot. A shuttle bus connects the building with the metro stations. Easy access to Prague's city ring and to the D1 highway leading to Brno.

Features and Services:

- Four-pipe fan coil system
- Raised floor
- Carpeted
- Suspended ceilings
- A central reception
- Representative entrance
- Security service 24/7
- 4 lifts
- Access by the magnetic card
- Meeting room
- Storage space
- Canteen on the ground floor
- Underground parking

Rental and service charges listed without VAT. Lessee pays no commission.



Office space

Ask for price

Prague 4, Michle, Vyskočilova

