

Apartment Three-bedroom (4+kk)

€ 4 598 | CZK 115 000

129.41 m², Prague 6, Střešovice, U laboratoře

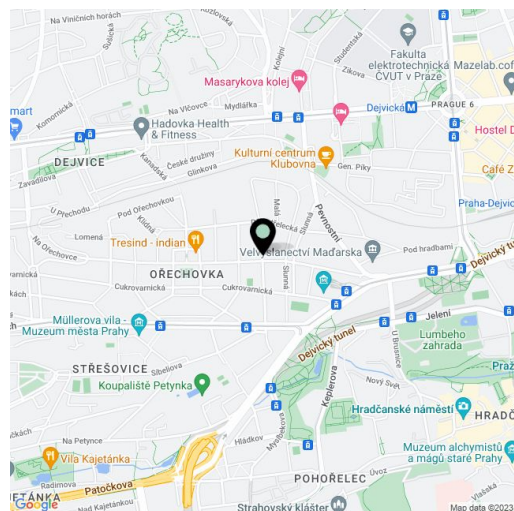


Apartment Three-bedroom (4+kk)

€ 4 598 | CZK 115 000

129.41 m², Prague 6, Střešovice, U laboratoře

| | |
|------------------|---|
| Total area | 196 m ² |
| Floor area* | 129 m ² |
| Terrace | 67 m ² |
| Parking | Two garage parking spaces. |
| Garage | Yes |
| Cellar | 17 m ² |
| Service price | Monthly deposit for services, water, and heating: CZK 24,000. Electricity is billed separately. |
| PENB | B |
| Reference number | 102523 |
| Available from | Immediately |



* Area of the unit according to the Civil Code. The area consists of the sum total area of the entire unit bounded by perimeter walls.

This unfurnished premium penthouse with 2 bathrooms with a terrace running along the entire perimeter of the apartment and wonderful views of the Prague Castle is situated in the exclusive Royal Triangle project designed by the renowned Schindler Seko architectural studio. The fourth floor apartment is located in the prestigious Střešovice residential area, on the edge of the attractive Ořechovka neighborhood, just a short walk from Prague Castle. An area with excellent transportation connections, quick access to the city center and full amenities, convenient to the airport and international schools, a few minutes to the Dejvická and Hradčanská metro stations. Building amenities include a reception, a common courtyard garden, and underground parking.

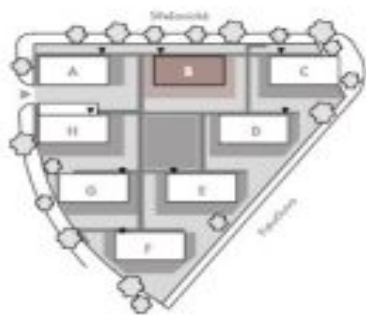
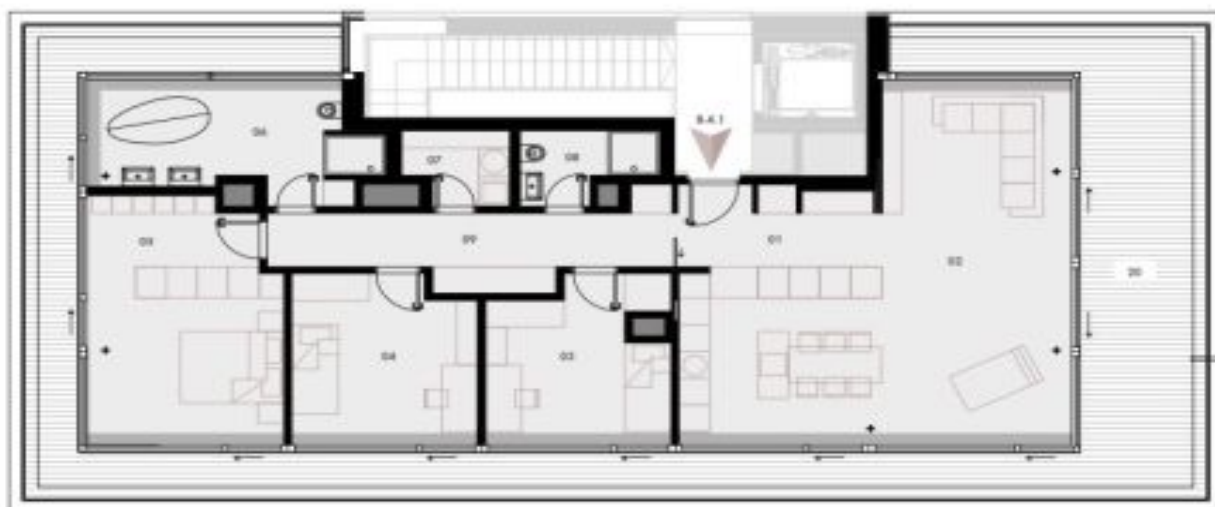
The interior includes a living room with a fully fitted open plan kitchen and dining area, 3 bedrooms, 2 bathrooms (bathtub, walk-in shower, toilet/walk-in shower, toilet), a utility room, and an entrance hall with a built-in wardrobe. The terrace is accessible from all main rooms.

High-quality materials, oak floors, tiles, tropical wood on the terrace, security entry door, automatic exterior blinds, underfloor heating, capillary cooling system in the ceilings and ventilation with heat recovery, aluminum windows with triple glazing, washer/dryer, Miele kitchen appliances, dishwasher, induction cooktop, wine fridge, alarm, spacious cellar, elevator, camera system. Two parking spaces in the underground garage are included in the rent.

Apartment Three-bedroom (4+kk)

€ 4 598 | CZK 115 000

129.41 m², Prague 6, Střešovice, U laboratoře



| | | |
|-----------------------------|----------------------------------|-----------------------------|
| 01 | VEŠTĚNÍ HALA ENTRANCE HALL | 6,95 m ² |
| 02 | ODYŠNÍ POKOJ + KCH LIVING ROOM | 45,5 m ² |
| 03 | POKOJ ROOM | 12,27 m ² |
| 04 | POKOJ ROOM | 13,2 m ² |
| 05 | KUCHAČKA BREAKFAST ROOM | 20,15 m ² |
| 06 | KOUPELNA BATHROOM | 13,05 m ² |
| 07 | TECH. MÍSTNOST TECHNICAL ROOM | 3,15 m ² |
| 08 | WC | 3,65 m ² |
| 09 | CHODBA HALLWAY | 11,49 m ² |
| ODYŠNÍ POKOJ LIVING SPACE | | 129,41 m ² |
| 10 | TERASA TERRACE | 67,04 m ² |
| 1110 | ŠEPIK CEILING | 16,94 m ² |
| CELKEM TOTAL | | 213,39 m² |

opa development