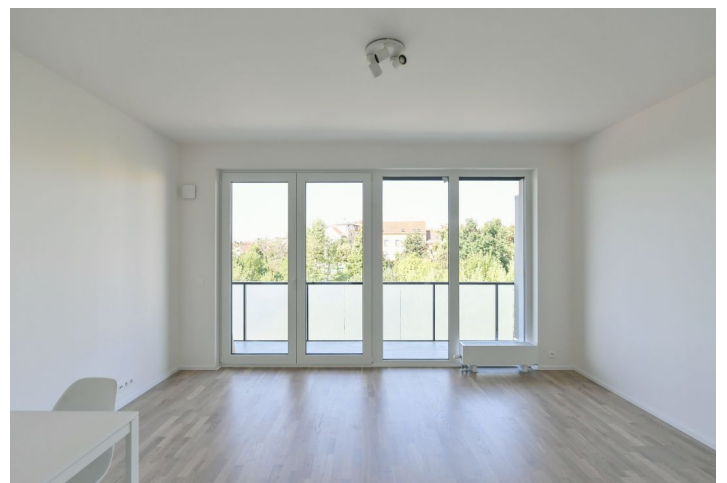


## Apartment One-bedroom (2+kk)

Rented

58 m<sup>2</sup>, Prague 8, Libeň, Na Libušáku



## Apartment One-bedroom (2+kk)

Rented

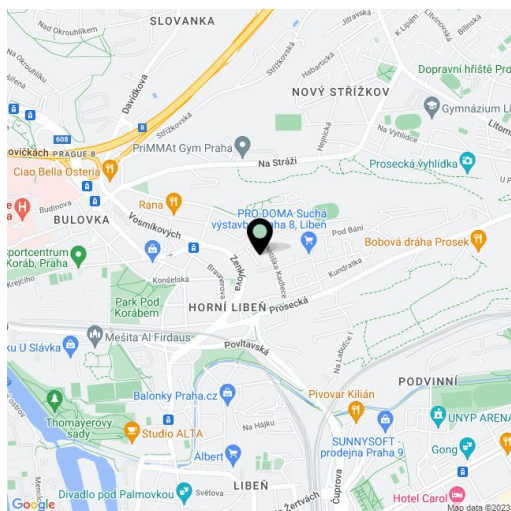
58 m<sup>2</sup>, Prague 8, Libeň, Na Libušáku

|                  |  |
|------------------|--|
| Total area       | 65 m <sup>2</sup>  |
| Floor area*      | 58 m <sup>2</sup>  |
| Loggia           | 8 m <sup>2</sup>   |
| Parking          | Garage parking.  |
| Garage           | Yes  |
| Cellar           | Yes  |
| Service price    | Monthly deposit for services, water, heating, and garage maintenance: CZK 4,750. Electricity is billed separately. |
| PENB             | B  |
| Reference number | 102455   |
| Available from   | 01.09.2025   |

This unfurnished apartment with an enclosed balcony and nice views, on the third floor of an energy-efficient building with a landscaped courtyard with a playground and garage parking, is part of the new KOTI Libeň residential project located in a quiet green area on a slope under Pekařka Park and the Prosecké Rocks natural monument, 5 minutes from a tram stop, 2 stops from the Invalidovna metro station. Complete amenities and services are available within easy reach, and there is also excellent transport accessibility.

The interior of the apartment includes a living room with a fully fitted open plan kitchen and access to the **enclosed balcony**, a bedroom with a wardrobe, a bathroom (bathtub with a shower screen, toilet), and an entrance hall with a built-in wardrobe.

**Heat recovery ventilation**, laminate floors, tiles, security entry door, central heating, dishwasher, induction cooktop, **cellar**, pram storage, bike and dog washing room. A **garage parking** space is included.



\* Size of the unit according to the Housing Act.

The area consists of the sum total of the internal area of every room.