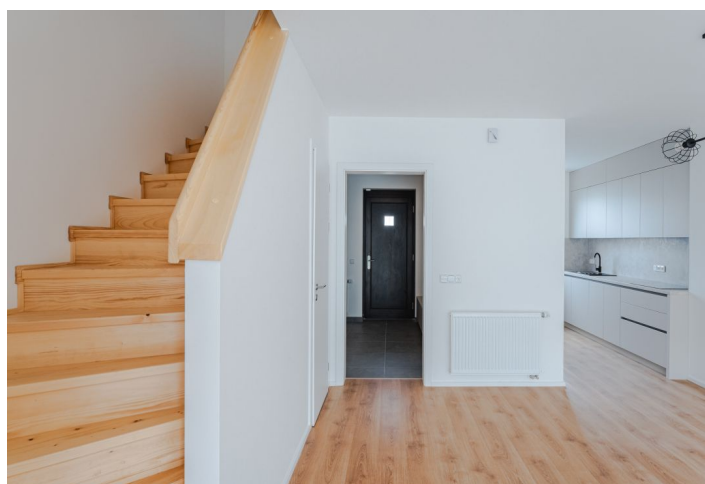
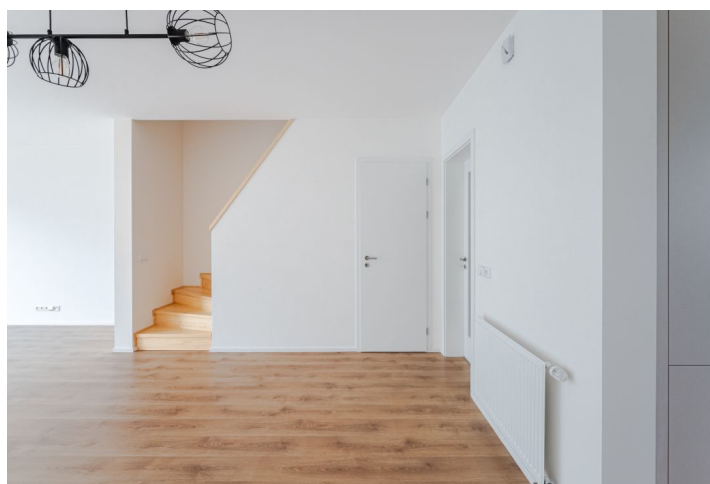


House Three-bedroom (4+kk)

Rented

128 m², Prague 8, Ďáblice, U spojů



House Three-bedroom (4+kk)

Rented128 m², Prague 8, Ďáblice, U spojů

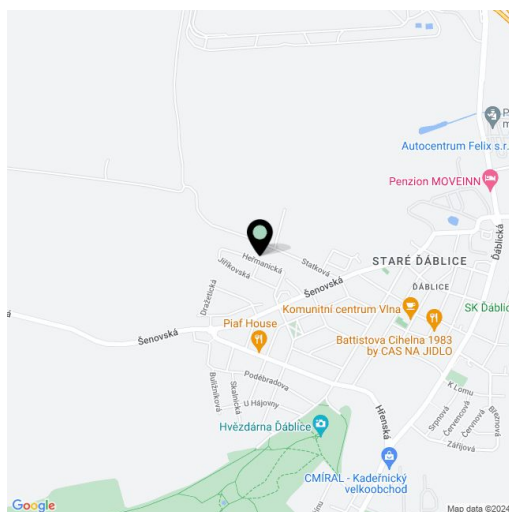
Total area	128 m ²
Plot	136 m ²
Foot print	69 m ²
Garden	43 m ²
Floor area	114 m ²
Terrace	14 m ²
Front garden	11 m ²
Parking	Outdoor parking.
Cellar	-
Service price	Utilities are billed separately.
PENB	G
Reference number	102134
Available from	Immediately

Brand new house in the Evergreen Ďáblice project. This is a newly built unfurnished 3-bedroom 2-bathroom townhouse with a garden, in a quiet "garden" neighborhood north-west of Ďáblice. The residential location offers ample greenery and amenities and services within easy reach, including the Ďáblický háj forest park with many sports and relaxation opportunities incl. hiking and bike paths, plus the nearby Čimický háj, Přátelství Park, and the riding stables in Dolní Chabry. There is a bus stop moments away, with regular connections to Ládví metro station (under 10 minutes), and it takes 7 minutes to drive to the Letňany shopping mall, and 15 minutes to Holešovice.

The ground floor features a living room with a fully fitted open plan kitchen and access to the **terrace / garden**, a toilet, a storage room, and an entrance hall. The upper floor offers 3 bedrooms, a bathroom with a walk-in shower, and a bathroom with a bathtub and a toilet.

Laminated floating floors, tiles, built-in wardrobes in the entrance hall and bedrooms, triple glazed plastic windows, Electrolux appliances, gas boiler. One outdoor parking space is included in the rent.

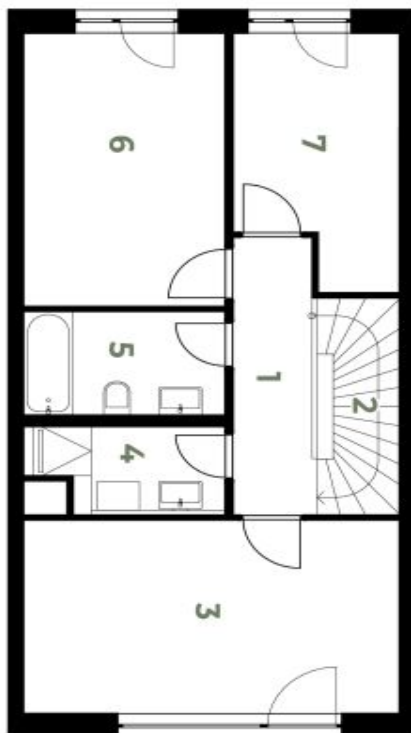
For more information, visit web site of the [Evergreen Ďáblice](#) project. **The tenant pays no commission.**



House Three-bedroom (4+kk)

128 m², Prague 8, Ďáblice, U spojů

Rented


Rodinné domy k pronájmu Praha 8

2.NP

009.04 | 4+kk | 114 m²

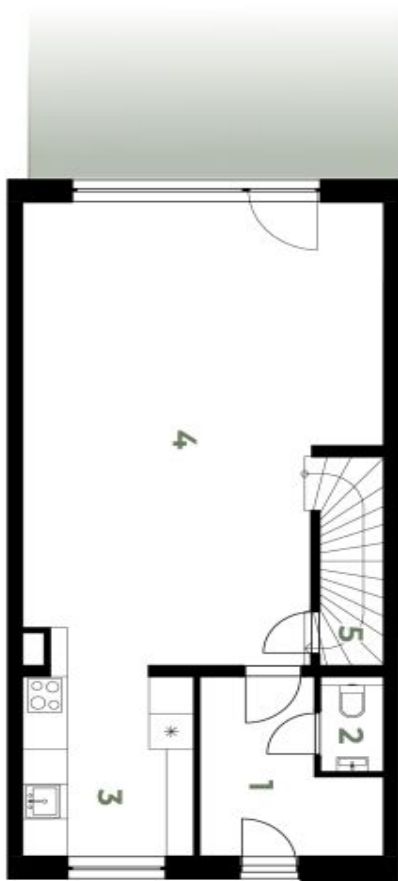
1 Chodba	5,36 m ²
2 Schodiště	3,91 m ²
3 Ložnice	17,09 m ²
4 Koupelna	3,22 m ²
5 Koupelna	4,80 m ²
6 Pokoj	12,87 m ²
7 Pokoj	8,90 m ²

Celkem 56,15 m²EKLUZIVNÍ ZASTOUPENÍ
PRO PRONÁJEM
svoboda&williams | CHRISTIE'S
INTERNATIONAL REAL ESTATEevergreen-pronajem.cz
info@evergreen-pronajem.czNa Zátorce 1, 160 00, Praha 6
+420 257 328 281

House Three-bedroom (4+kk)

128 m², Prague 8, Ďáblice, U spojů

Rented


Rodinné domy k pronájmu Praha 8

1.NP

009.04 | 4+kk | 114 m²

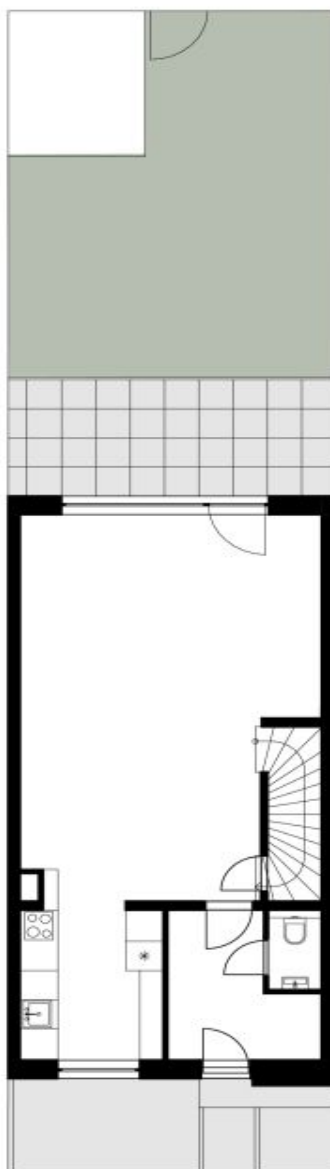
1	Vstupní hala	6,69 m ²
2	WC	1,43 m ²
3	Kuchyně	7,82 m ²
4	Obývací pokoj	38,77 m ²
5	Komora	2,71 m ²

Celkem 57,41 m²svoboda&williams | CHRISTIE'S
INTERNATIONAL REAL ESTATE
EXKLUZIVNÍ ZASTOUPENÍ
PRO PRONÁJEMevergreen-pronajem.cz
info@evergreen-pronajem.cz
Na Zátorce 1, 160 00, Praha 6
+420 257 328 281

House Three-bedroom (4+kk)

128 m², Prague 8, Ďáblice, U spojů

Rented



ZAHRADA

009.04 | 4+kk | 114 m²

Předzahrádka	11,19 m ²
Terasa	14 m ²
Plocha zahrady	43 m ²

svoboda&williams | CHRISTIE'S
INTERNATIONAL REAL ESTATE

EXKLUZIVNÍ ZASTOUPENÍ
PRO PRONÁJEM

evergreen-pronajem.cz
info@evergreen-pronajem.cz

Na Zátorce 1, 160 00, Praha 6
+420 257 328 281

House Three-bedroom (4+kk)

Rented

128 m², Prague 8, Ďáblice, U spojů



CELKOVÁ SITUACE

009.04 | 4+kk | 114 m²

svoboda&williams | CHRISTIE'S
INTERNATIONAL REAL ESTATE

EXKLUZIVNÍ ZASTOUPENÍ
PRO PRONÁJEM

evergreen-pronajem.cz
info@evergreen-pronajem.cz
Na Zátorce 1, 160 00, Praha 6
+420 257 328 281