



House Three-bedroom (4+kk)

Rented

127 m², Prague 8, Ďáblice, Statková





House Three-bedroom (4+kk)

Rented

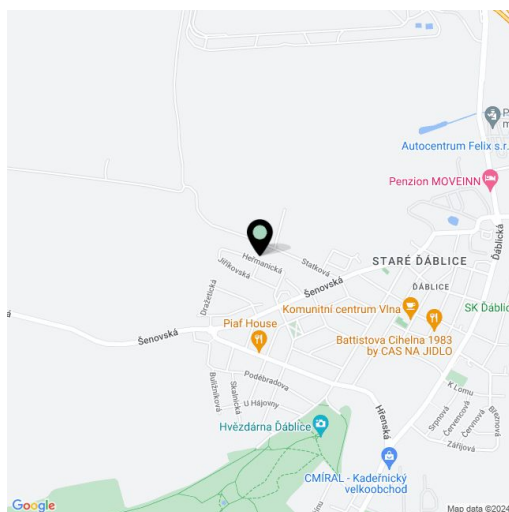
127 m², Prague 8, Ďáblice, Statková

Total area	127 m ²
Plot	113 m ²
Foot print	54 m ²
Garden	34 m ²
Floor area	114 m ²
Terrace	13 m ²
Front garden	12 m ²
Parking	Outdoor parking.
Cellar	-
Service price	Utilities are billed separately.
PENB	G
Reference number	102101
Available from	Immediately

Brand new house in the Evergreen Ďáblice project. This is a newly built unfurnished 3-bedroom townhouse with a garden, in a quiet "garden" neighborhood north-west of Ďáblice. The residential location offers ample greenery and amenities and services within easy reach, including the Ďáblický háj forest park with many sports and relaxation opportunities incl. hiking and bike paths, plus the nearby Čimický háj, Přátelství Park, and the riding stables in Dolní Chabry. There is a bus stop moments away, with regular connections to Ládví metro station (under 10 minutes), and it takes 7 minutes to drive to the Letňany shopping mall, and 15 minutes to Holešovice.

The ground floor features a living room with a fully fitted open plan kitchen and access to the **terrace / garden**, a toilet, a storage room, and an entrance hall. The upper floor offers 3 bedrooms, and a bathroom with a bathtub and a toilet.

Laminated floating floors, tiles, built-in wardrobes in the entrance hall and bedrooms, triple glazed plastic windows, gas boiler. Two outdoor **parking** spaces are included in the rent.

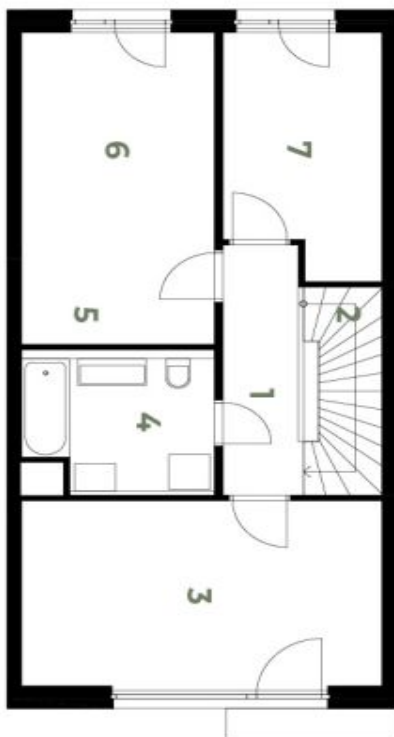




House Three-bedroom (4+kk)

127 m², Prague 8, Ďáblice, Statková

Rented



2.NP

012.02 | 4+kk | 114 m²

1 Chodba	5,29 m ²
2 Schodiště	3,90 m ²
3 Ložnice	17,09 m ²
4 Koupelna	6,10 m ²
5 Pokoj	15,30 m ²
6 Pokoj	9,23 m ²

Celkem 56,92 m²

svoboda&williams | CHRISTIE'S
INTERNATIONAL REAL ESTATE
EKLUZIVNÍ ZASTOUPENÍ
PRO PRONÁJEM

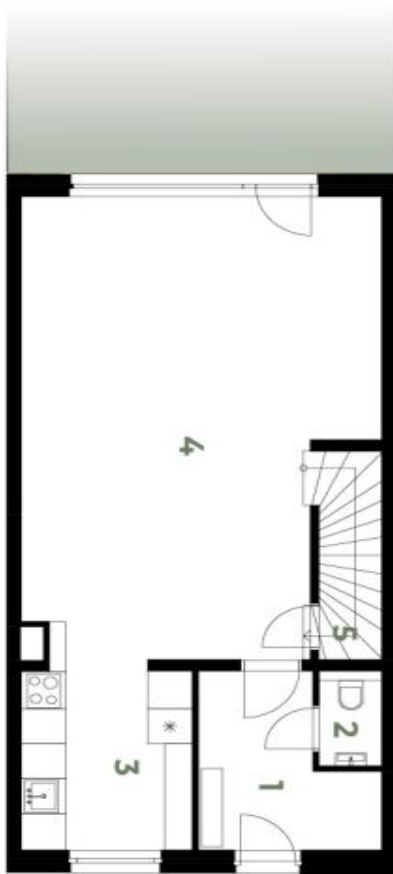
evergreen-pronajem.cz
info@evergreen-pronajem.cz
Na Zátorce 1, 160 00, Praha 6
+420 257 328 281



House Three-bedroom (4+kk)

127 m², Prague 8, Ďáblice, Statková

Rented




EVERGREEN
Rodinné domy k pronájmu Praha 8

1.NP

012.02 | 4+kk | 114 m²

1	Vstupní hala	6,69 m ²
2	WC	1,43 m ²
3	Kuchyň	7,82 m ²
4	Obývací pokoj	38,77 m ²
5	Komora	2,71 m ²

Celkem 57,41 m²

svoboda&williams | CHRISTIE'S
INTERNATIONAL REAL ESTATE
EKLUZIVNÍ ZASTOUPENÍ
PRO PRONÁJEM

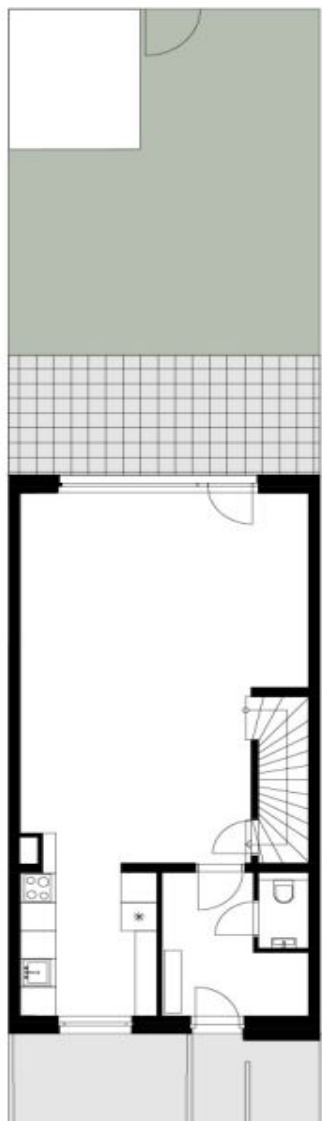
evergreen-pronajem.cz
info@evergreen-pronajem.cz
Na Zátorce 1, 160 00, Praha 6
+420 257 328 281



House Three-bedroom (4+kk)

127 m², Prague 8, Ďáblice, Statková

Rented



ZAHRADA

012.02 | 4+kk | 114 m²

Předzahrádka	11,80 m ²
Terasa	13,00 m ²
Plocha zahrady	33,80 m ²

svoboda&williams | CHRISTIE'S
INTERNATIONAL REAL ESTATE

EXKLUZIVNÍ ZASTOUPENÍ
PRO PRONÁJEM

evergreen-pronajem.cz
info@evergreen-pronajem.cz

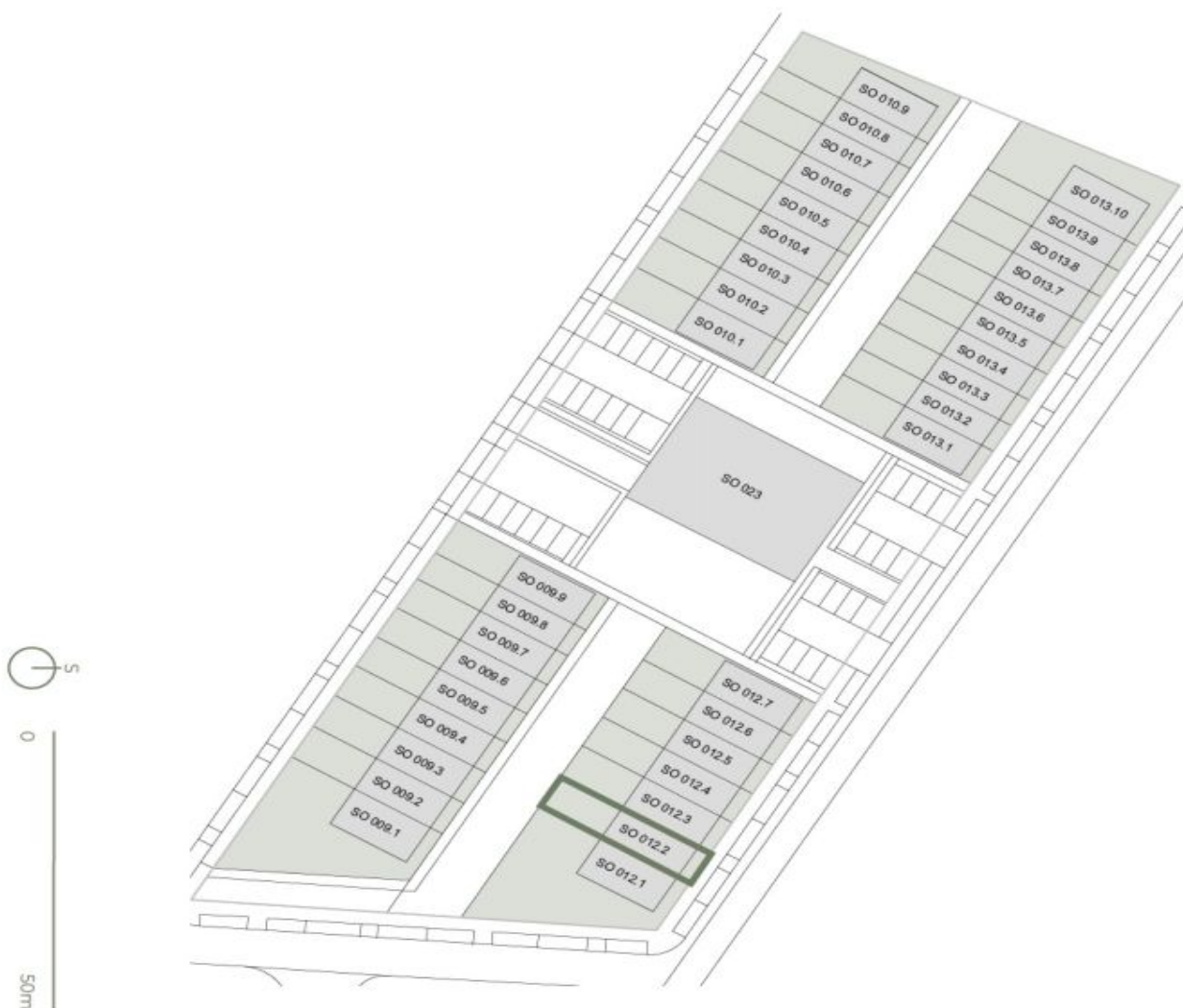
Na Zátorce 1, 160 00, Praha 6
+420 257 328 281



House Three-bedroom (4+kk)

127 m², Prague 8, Ďáblice, Statková

Rented



svoboda&williams | **CHRISTIE'S**
INTERNATIONAL REAL ESTATE

EXKLUZIVNÍ ZASTOUPENÍ
PRO PRONÁJEM

evergreen-pronajem.cz
info@evergreen-pronajem.cz

Na Zátorce 1, 160 00, Praha 6
+420 257 328 281

CELKOVÁ SITUACE

012.02 | 4+kk | 114 m²

Rodišné domy k pronájmu Praha 8