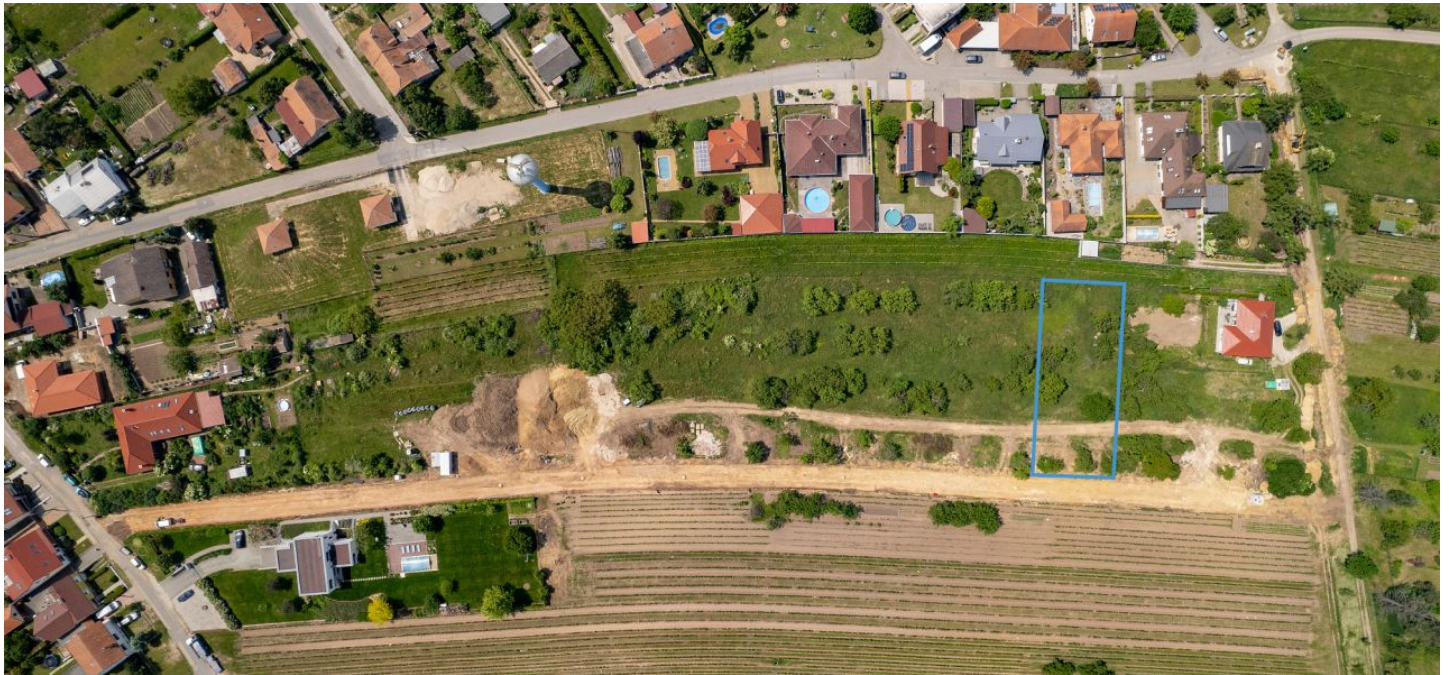


Land

Ask for price

1360 m², Břeclav, Valtice, U Vodojemu

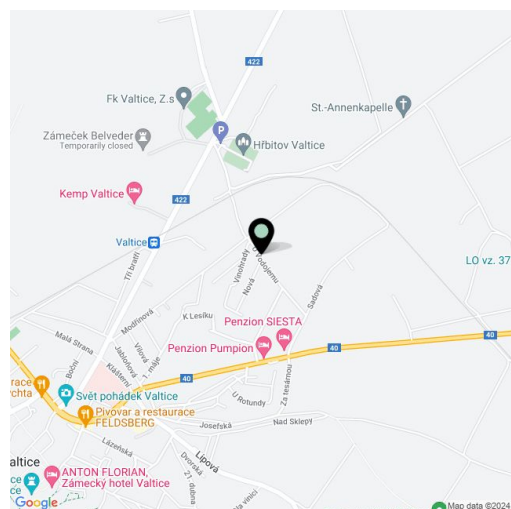


Land

Ask for price

1 360 m², Břeclav, Valtice, U Vodojemu

Price per sq. m.	Ask for price
Total area	1 360 m ²
Land type	Housing
Reference number	102087



A unique opportunity to buy a building plot right next to vineyards and mature trees on the outskirts of the wine-growing town of Valtice. The location of the plot guarantees welcome peace in a beautiful landscape and views of the beautiful countryside.

Utility networks are brought to this slightly sloping plot of land: **electricity, water, sewerage, and preparation for an optical cable.** Access to the property is via a new lit access road. The maximum buildability is **20%**. A few other building plots are available in the neighborhood, so a total of **8 new family houses can be built here.**

The plot is located in a **wonderful place** on the edge of the development, approx. 3 minutes by car from the picturesque historical center of Valtice. The city has a **high-quality infrastructure**: kindergarten and elementary school, secondary winery school, hospital, pharmacies, shops, restaurants and cafes. The dominant feature here is the castle surrounded by a park with romantic buildings. The city is easily accessible by train and bus, and you can easily get to the D2 highway by car.

Total area 1,360 m².