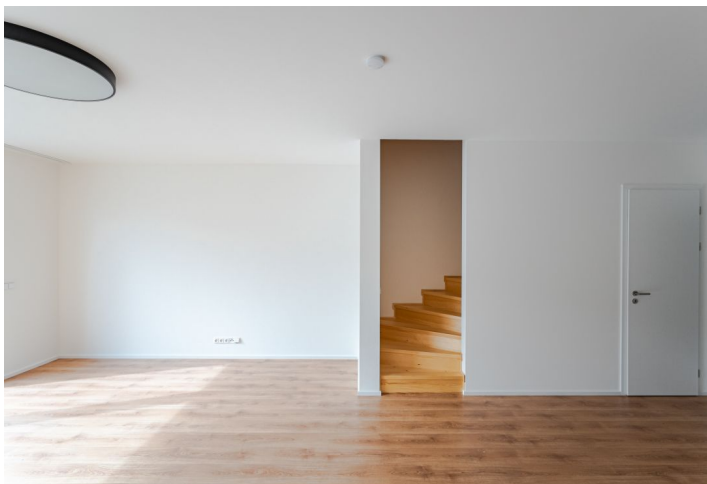


House Four-bedroom (5+kk)

Rented

170 m², Prague 8, Ďáblice, Oldřichovská



House Four-bedroom (5+kk)

Rented

170 m², Prague 8, Ďáblice, Oldřichovská

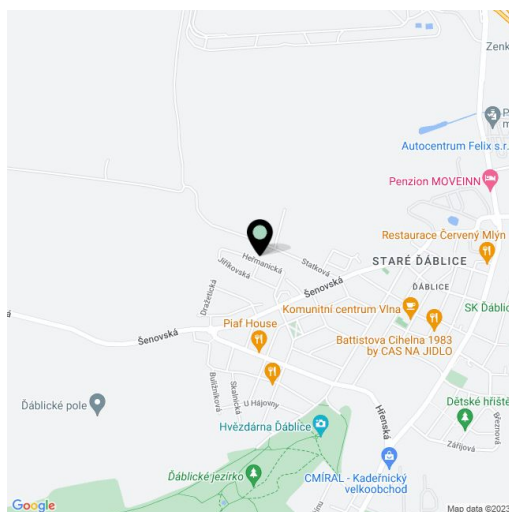
Total area	170 m ²
Plot	130 m ²
Foot print	55 m ²
Garden	34 m ²
Floor area	139 m ²
Terrace	31 m ²
Front garden	15 m ²
Parking	Two outdoor parking spaces
Cellar	-
Service price	Utilities are billed separately.
PENB	G
Reference number	102079
Available from	Immediately

Brand new house in the Evergreen Ďáblice project. This is a newly built unfurnished 4-bedroom 2-bathroom townhouse with a roof terrace and a garden, in a quiet "garden" neighborhood north-west of Ďáblice. The residential location offers ample greenery and amenities and services within easy reach, including the Ďáblický háj forest park with many sports and relaxation opportunities incl. hiking and bike paths, plus the nearby Čimický háj, Přátelství Park, and the riding stables in Dolní Chabry. There is a bus stop moments away, with regular connections to Ládví metro station (under 10 minutes), and it takes 7 minutes to drive to the Letňany shopping mall, and 15 minutes to Holešovice.

The ground floor features a living room with a fully fitted open plan kitchen and access to the **terrace / garden**, a toilet, a storage room, and an entrance hall. The first floor offers 3 bedrooms, a storage room, and a bathroom with a bathtub and a toilet. The second floor includes a fourth bedroom, a bathroom with a walk-in shower and a toilet, and a **roof terrace**.

Laminated floating floors, tiles, built-in wardrobes in the entrance hall and bedrooms, triple glazed plastic windows, Electrolux appliances, gas boiler. Two outdoor **parking spaces** are included in the rent.

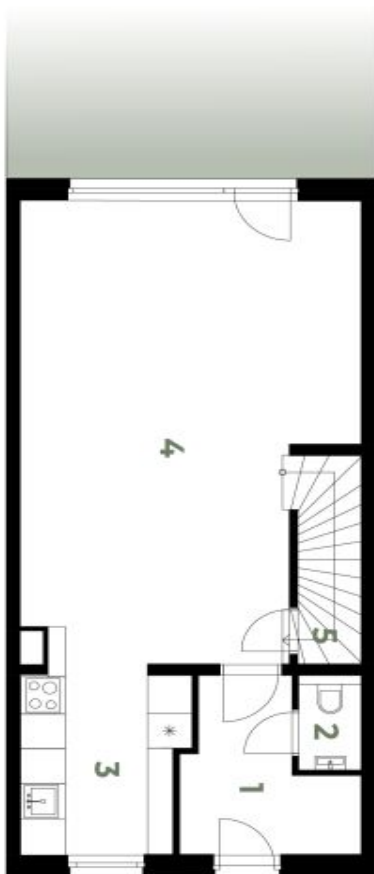
For more information, visit web site of the [Evergreen Ďáblice](#) project. **The tenant pays no commission.**



House Four-bedroom (5+kk)

170 m², Prague 8, Ďáblice, Oldřichovská

Rented


Rodinné domy k pronájmu Praha 8

1.NP

010.03 | 5+kk | 139 m²

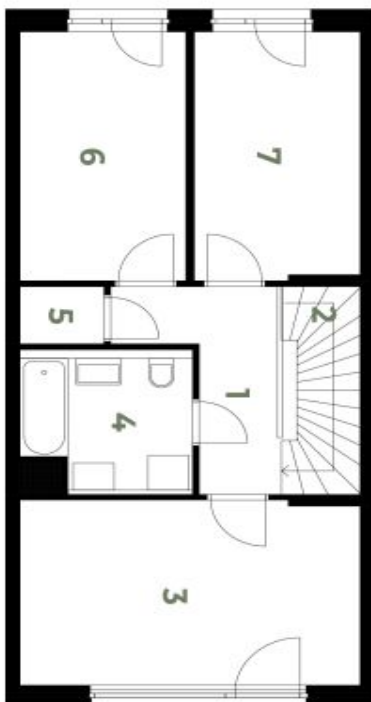
1	Vstupní hala	6,24 m ²
2	WC	1,43 m ²
3	Kuchyně	7,85 m ²
4	Obývací pokoj	36,32 m ²
5	Komora	2,61 m ²

Celkem 54,45 m²svoboda&williams | CHRISTIE'S
INTERNATIONAL REAL ESTATEEKLUZIVNÍ ZASTOUPENÍ
PRO PRONÁJEMevergreen-pronajem.cz
info@evergreen-pronajem.czNa Zátorce 1, 160 00, Praha 6
+420 257 328 281

House Four-bedroom (5+kk)

170 m², Prague 8, Ďáblice, Oldřichovská

Rented



2.NP

010.03 | 5+kk | 139 m²

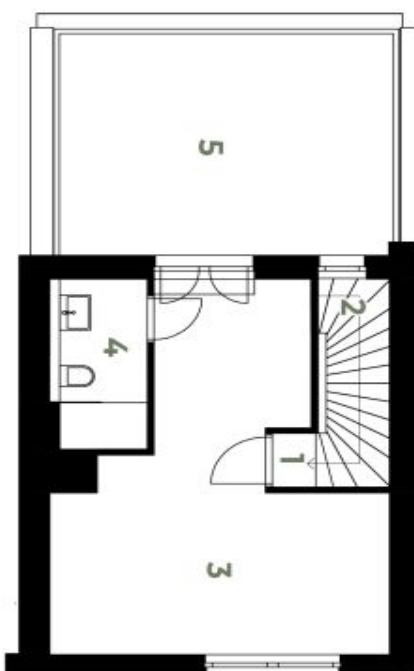
1 Chodba	5,85 m ²
2 Schodiště	3,91 m ²
3 Ložnice	16,03 m ²
4 Koupelna	5,39 m ²
5 Komora	1,29 m ²
6 Pokoj	10,53 m ²
7 Pokoj	10,42 m ²

Celkem 53,41 m²EKLUZIVNÍ ZASTOUPENÍ
PRO PRONÁJEMsvoboda&williams | CHRISTIE'S
INTERNATIONAL REAL ESTATEevergreen-pronajem.cz
info@evergreen-pronajem.czNa Zátorce 1, 160 00, Praha 6
+420 257 328 281

House Four-bedroom (5+kk)

170 m², Prague 8, Ďáblice, Oldřichovská

Rented



 **EVERGREEN**
Rodinné domy k pronájmu Praha 8

3. NP

010.03 | 5+kk | 139 m²

1 Chodba	0,66 m ²
2 Schodiště	3,13 m ²
3 Pokoj	18,92 m ²
4 Koupelna	3,20 m ²
5 Terasa	17,51 m ²

Celkem 27,31 m²

svoboda&williams | CHRISTIE'S
INTERNATIONAL REAL ESTATE

EXKLUZIVNÍ ZASTOUPENÍ
PRO PRONÁJEM

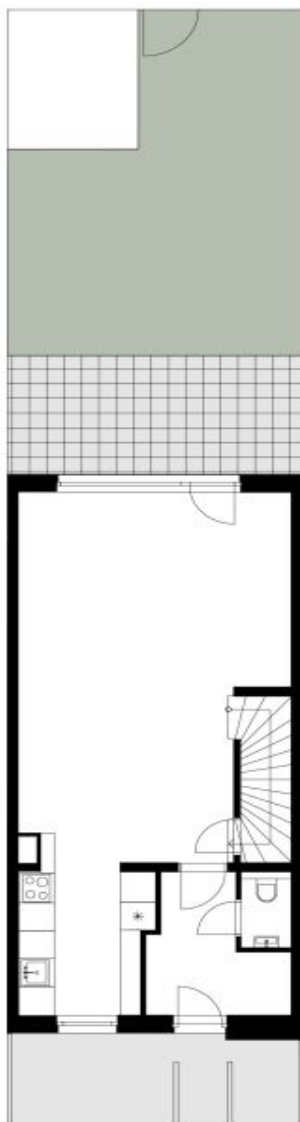
evergreen-pronajem.cz
info@evergreen-pronajem.cz

Na Zátorce 1, 160 00, Praha 6
+420 257 328 281

House Four-bedroom (5+kk)

170 m², Prague 8, Ďáblice, Oldřichovská

Rented



ZAHRADA

010.03 | 5+kk | 139 m²

Předzahrádka	14,80 m ²
Terasa	13,00 m ²
Plocha zahrady	33,80 m ²

svoboda&williams | CHRISTIE'S
INTERNATIONAL REAL ESTATE

EXKLUZIVNÍ ZASTOUPENÍ
PRO PRONÁJEM

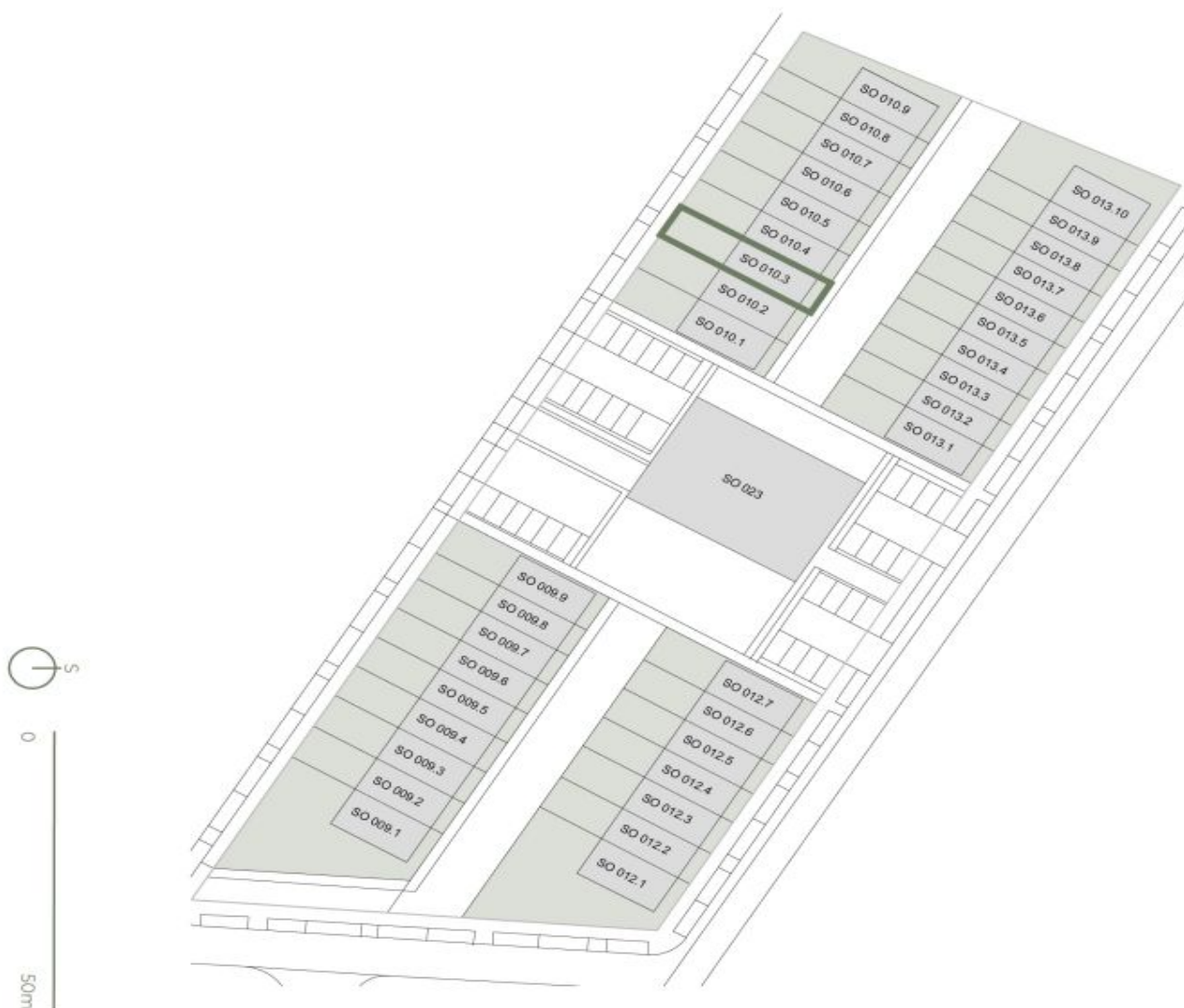
evergreen-pronajem.cz
info@evergreen-pronajem.cz

Na Zátorce 1, 160 00, Praha 6
+420 257 328 281

House Four-bedroom (5+kk)

Rented

170 m², Prague 8, Ďáblice, Oldřichovská



CELKOVÁ SITUACE

010.03 | 5+kk | 139 m²

EXKLUZIVNÍ ZASTOUPENÍ
PRO PRONÁJEM

svoboda&williams | CHRISTIE'S
INTERNATIONAL REAL ESTATE

evergreen-pronajem.cz
info@evergreen-pronajem.cz
Na Zátorce 1, 160 00, Praha 6
+420 257 328 281