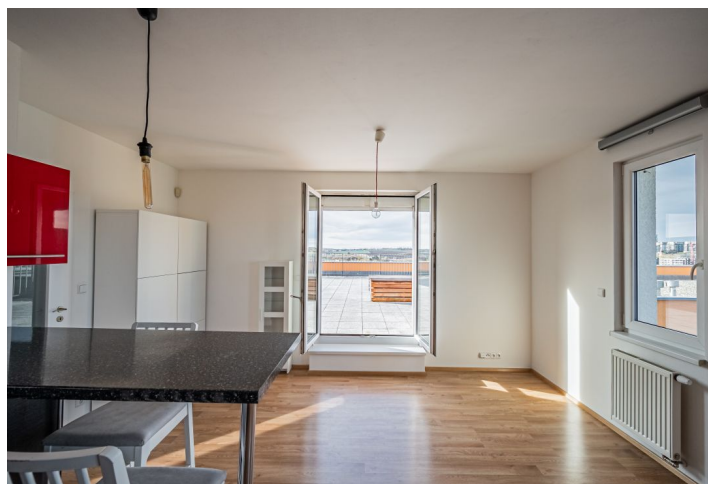


## Apartment Studio (1+kk)

Rented

39 m², Prague 5, Stodůlky, Radouňova



## Apartment Studio (1+kk)

Rented

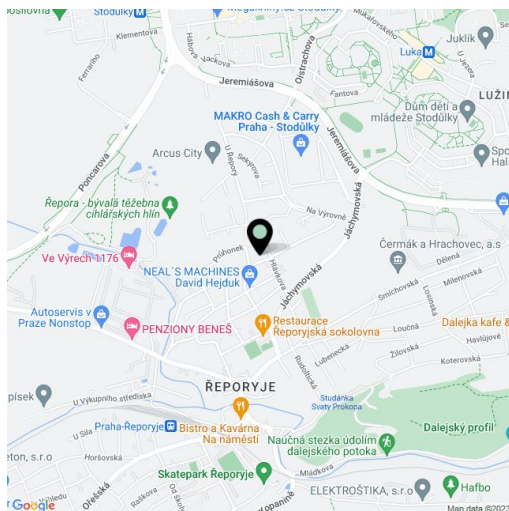
39 m², Prague 5, Stodůlky, Radouňova

|                  |  |
|------------------|--|
| Total area       | 128 m²   |
| Floor area*      | 39 m²  |
| Terrace          | 89 m²  |
| Parking          | Garage parking.  |
| Garage           | Yes  |
| Cellar           | -  |
| Service price    | Monthly deposit for services, water, and heating CZK 3,900. Electricity is billed separately- transferred to the tenant. |
| PENB             | G  |
| Reference number | 101974   |
| Available from   | Immediately  |

This semi-furnished studio apartment with a large terrace and far-reaching green views, on the 3rd floor of a residential building with no elevator, is located in a quiet residential neighborhood near the Řepora forest park with several ponds, within easy reach of the Luka metro station, services and amenities, and with quick access to the German School in Jinonice and the popular Prokopské Valley.

The apartment includes a living room/bedroom with a fully fitted open plan kitchen and access to a large **terrace**, a bathroom with a bathtub and a toilet, a storage room, and an entrance hall.

Laminate floating floors, tiles, underfloor heating in the bathroom, washing machine, dishwasher, induction cooktop. A **garage parking** space is included.



\* Size of the unit according to the Housing Act.  
The area consists of the sum total of the internal area of every room.