

Apartment One-bedroom (2+kk)

Sold

73.8 m², Prague 3, Vinohrady, Řípská



Apartment One-bedroom (2+kk)

Sold

73.8 m², Prague 3, Vinohrady, Řipská

Total area	80 m ²
Floor area*	74 m ²
Terrace	6 m ²
Parking	-
Cellar	-
PENB	E
Reference number	101926

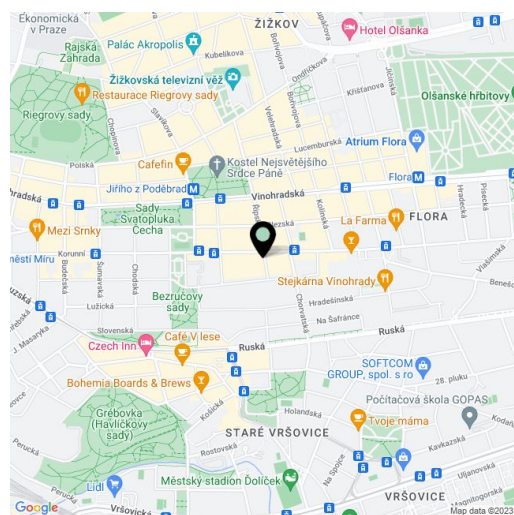
This bright duplex apartment with an air-conditioned bedroom and a terrace facing the courtyard is located in a renovated historic apartment building with an elevator. An attractive place on a side street a few steps from Jiřího z Poděbrad Square, 5 minutes by public transport from the city center.

On the entrance level (4th floor of the building) is a bright living space with a kitchen and dining area, a bathroom (bathtub, toilet, and bidet), a storage room under the stairs, and a vestibule. In the attic is a bedroom with a bathroom (shower, toilet, bidet), a utility room with a connection for a washing machine, and an east-facing terrace overlooking the courtyard.

Facilities include refurbished wooden parquet floors, a large studio window in the living room, air-conditioning in the attic bedroom, and a gas boiler. The building is well maintained and has an elevator.

The corner building with an ornate facade stands on a side street in Vinohrady in the wider center of Prague. The place has a complete infrastructure. Cafes, restaurants, and shops operate in the immediate vicinity. A short distance away is a metro station and the Jiřího z Poděbrad tram stop, and the Flora shopping and entertainment center is also within walking distance. The elegant district is very pleasant thanks to the nearby Svatopluk Čech and Bratři Čapků parks, and you can also walk to the Havlíčkovy or Riegrovy Sady parks.

Floor area 73.8 m², terrace 6.1 m².

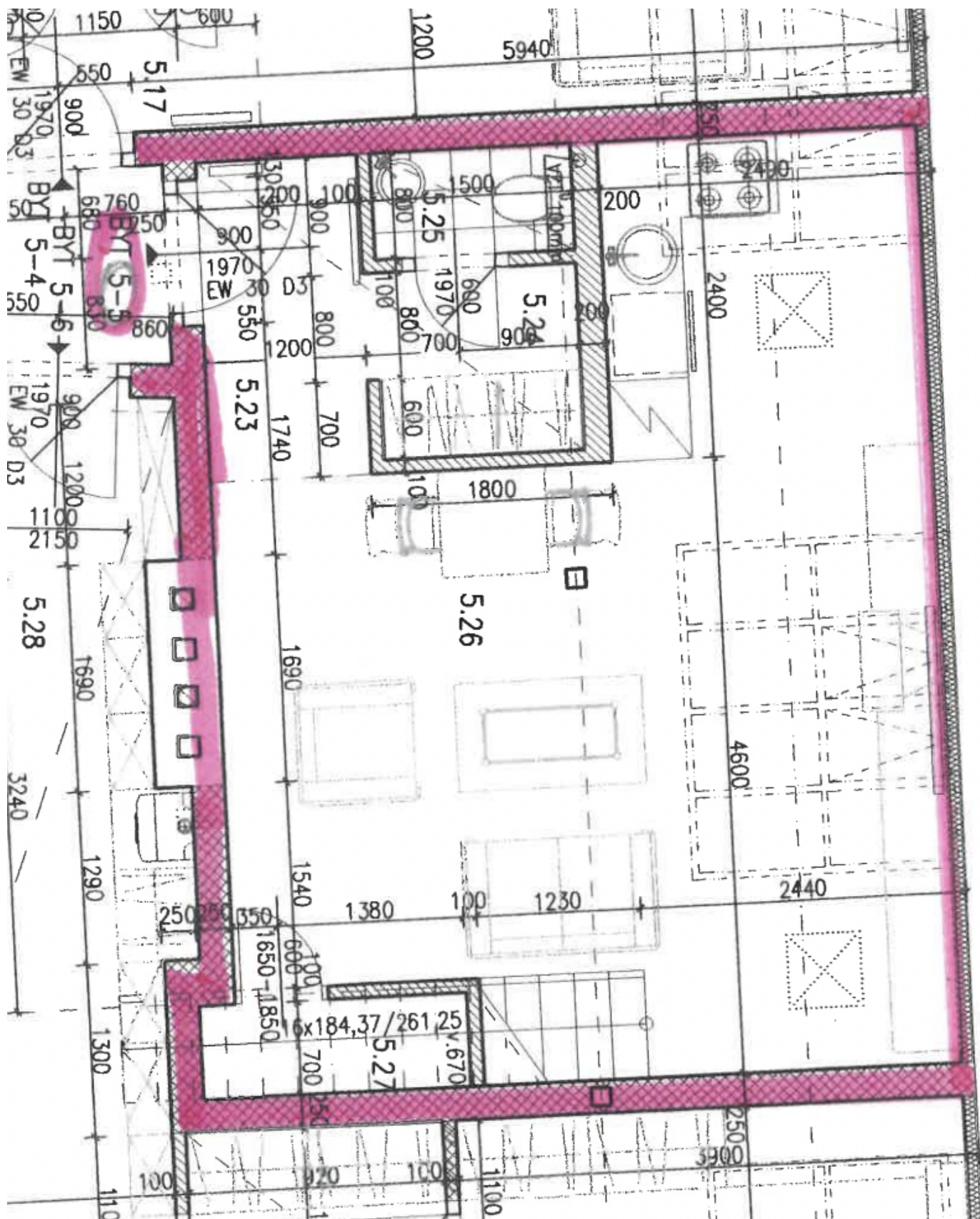


* Area of the unit according to the Civil Code. The area consists of the sum total area of the entire unit bounded by perimeter walls.

Apartment One-bedroom (2+kk)

Sold

73.8 m², Prague 3, Vinohrady, Řípská



Apartment One-bedroom (2+kk)

Sold

73.8 m², Prague 3, Vinohrady, Řípská

