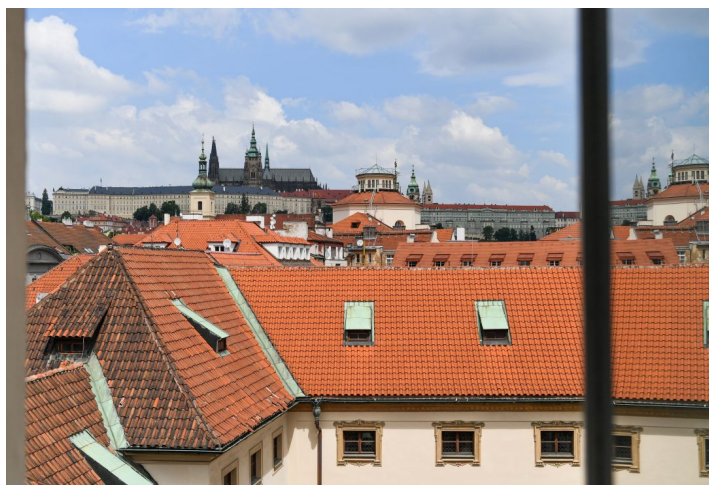




## Apartment Four-bedroom (5+kk)

Sold

152 m<sup>2</sup>, Prague 1, Malá Strana, Všešrdova





## Apartment Four-bedroom (5+kk)

**Sold**152 m<sup>2</sup>, Prague 1, Malá Strana, Všešrdova

Total area	167 m <sup>2</sup>
Floor area*	152 m <sup>2</sup>
Terrace	15 m <sup>2</sup>
Parking	-
Cellar	Yes
Service price	4 754 CZK monthly
PENB	G
Reference number	101778

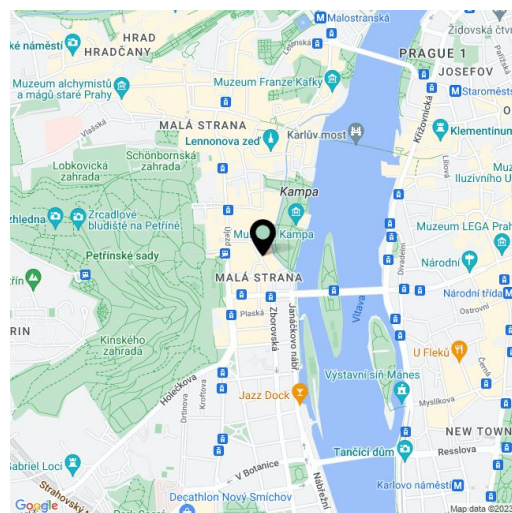
**This atypical duplex apartment with an impressive genius loci, enhanced by direct views of Prague Castle, is located in a romantic corner in the historical core of the old city, in the Malá Strana district right next to Kampa Island.**

On the entrance level (3rd floor of the building) there are **4 bedrooms**, 2 of which have dressing rooms, **2 bathrooms**, and 2 storage rooms. The upper floor opens onto an **impressive space** with high, sloping ceilings, which includes a living room and a kitchen with a dining area. This space is followed by a **terrace** with views of **Petřín Hill and the Hunger Wall**, facing **south** onto a **quiet courtyard**. From the windows, you can admire the iconic panorama of **Prague Castle** during your morning coffee or at any time of the day.

The interior was recently renovated (2018-2019), and the **original craftsmanship elements** (such as the wooden beams) were preserved and sensitively renovated. The floors are **parquet** and tiled; windows are wooden casement and skylights; the walls are decorated with **marble mosaics, designer wallpaper, and screed**; the renowned artist Bořek Šípek designed the railings in the interior. The kitchen is fully equipped (including a dishwasher), and a gas boiler provides heating. The historic building has **no elevator**.

**This poetic place** is located on a side street between the **Čertovka Canal, Kampa Park, and Petřín Hill, close to the Charles Bridge**. In the immediate vicinity, there are many cafes and restaurants, shops, a Sokol organization, a kindergarten, a high school, and a graphic arts academy. A tram stop is a few steps away.

Floor area 152.2 m<sup>2</sup>, terrace 15m<sup>2</sup>, cellar approx 6m<sup>2</sup>



\* Size of the unit according to the Housing Act.  
The area consists of the sum total of the internal area of every room.

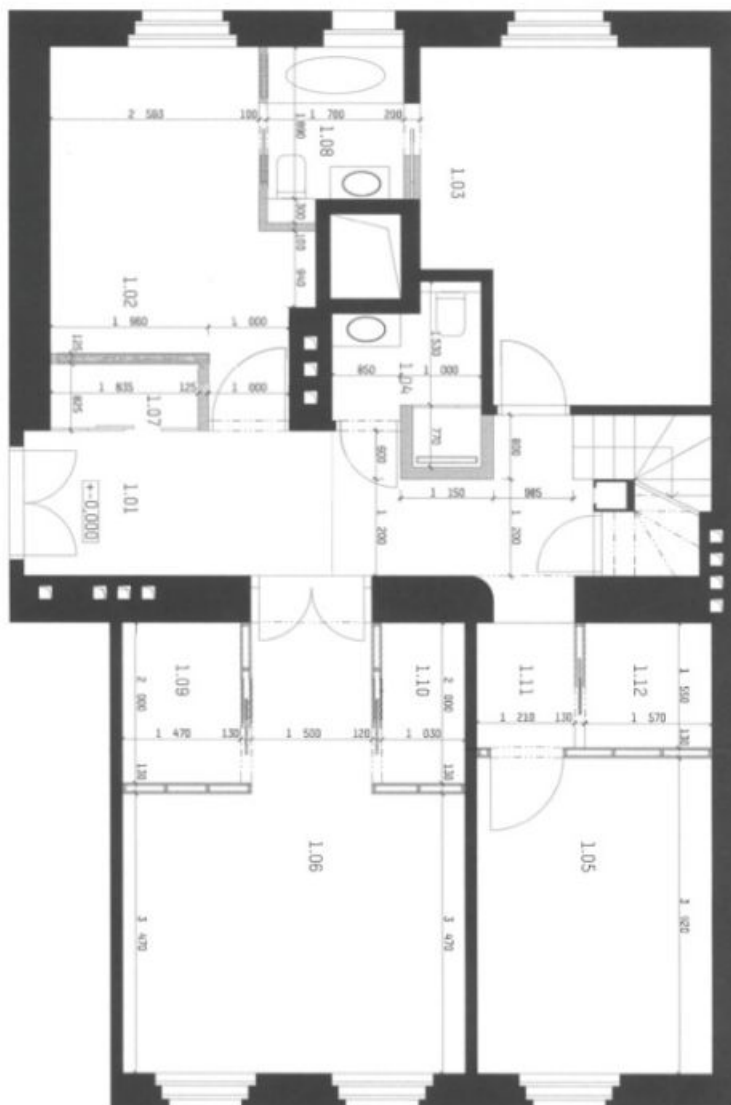




# Apartment Four-bedroom (5+kk)

152 m<sup>2</sup>, Prague 1, Malá Strana, Všešrdova

**Sold**



LEGENDA  
 STANOVANÍ  
 VÝSTAVBA  
 VÝSTAVBA  
 VÝSTAVBA

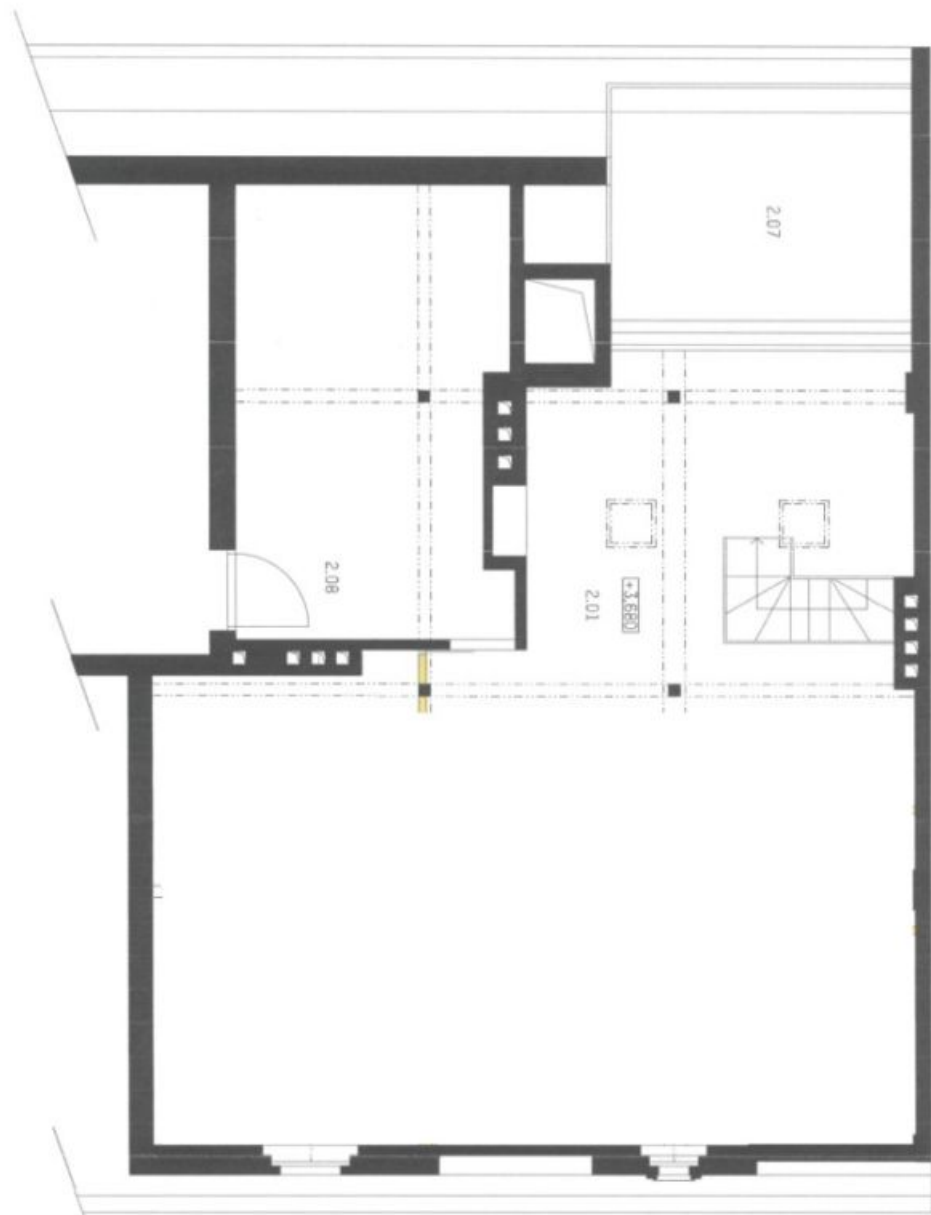
Č. MÍSTNOSTI	NÁZEV MÍSTNOSTI	PLOŠKA	CELKOVÁ PLOŠKA	OBJEM	STAVBA
1.01	Chodba	21,1 m <sup>2</sup>	152,0 m <sup>2</sup>	0,0 m <sup>3</sup>	Stavba
1.02	Ložnice	11,9 m <sup>2</sup>	152,0 m <sup>2</sup>	0,0 m <sup>3</sup>	Stavba
1.03	Ložnice	13,7 m <sup>2</sup>	152,0 m <sup>2</sup>	0,0 m <sup>3</sup>	Stavba
1.04	Kuchyně	11,2 m <sup>2</sup>	152,0 m <sup>2</sup>	0,0 m <sup>3</sup>	Stavba
1.05	Ložnice	13,9 m <sup>2</sup>	152,0 m <sup>2</sup>	0,0 m <sup>3</sup>	Stavba
1.06	Ložnice	13,9 m <sup>2</sup>	152,0 m <sup>2</sup>	0,0 m <sup>3</sup>	Stavba
1.07	WC	1,4 m <sup>2</sup>	152,0 m <sup>2</sup>	0,0 m <sup>3</sup>	Stavba
1.08	WC	1,4 m <sup>2</sup>	152,0 m <sup>2</sup>	0,0 m <sup>3</sup>	Stavba
1.09	WC	1,4 m <sup>2</sup>	152,0 m <sup>2</sup>	0,0 m <sup>3</sup>	Stavba
1.10	Kuchyň	11,2 m <sup>2</sup>	152,0 m <sup>2</sup>	0,0 m <sup>3</sup>	Stavba
1.11	Obývací pokoj	13,7 m <sup>2</sup>	152,0 m <sup>2</sup>	0,0 m <sup>3</sup>	Stavba
1.12	Obývací pokoj	13,7 m <sup>2</sup>	152,0 m <sup>2</sup>	0,0 m <sup>3</sup>	Stavba



# Apartment Four-bedroom (5+kk)

152 m<sup>2</sup>, Prague 1, Malá Strana, Všešrdova

**Sold**



LEGENDA

- STANOVANÉ PLOŠKY
- STANOVANÉ PLOŠKY S NEKVALITNÍM VYŠKOVÝM VÝŠKEM
- NEKVALITNÍ VYŠKOVÝ VÝŠK

ČÍSLO	NÁZEV	POŠŤOVÁ	POŠŤOVÁ	ČÍSLO	STUPEŇ
2.01	KUPELNA	2012	2012012	2012	2012
2.02	KUPELNA	2012	2012012	2012	2012
2.03	KUPELNA	2012	2012012	2012	2012
2.04	KUPELNA	2012	2012012	2012	2012
2.05	KUPELNA	2012	2012012	2012	2012
2.06	KUPELNA	2012	2012012	2012	2012
2.07	KUPELNA	2012	2012012	2012	2012
2.08	KUPELNA	2012	2012012	2012	2012
2.09	KUPELNA	2012	2012012	2012	2012
2.10	KUPELNA	2012	2012012	2012	2012
2.11	KUPELNA	2012	2012012	2012	2012
2.12	KUPELNA	2012	2012012	2012	2012
2.13	KUPELNA	2012	2012012	2012	2012
2.14	KUPELNA	2012	2012012	2012	2012
2.15	KUPELNA	2012	2012012	2012	2012
2.16	KUPELNA	2012	2012012	2012	2012
2.17	KUPELNA	2012	2012012	2012	2012
2.18	KUPELNA	2012	2012012	2012	2012
2.19	KUPELNA	2012	2012012	2012	2012
2.20	KUPELNA	2012	2012012	2012	2012
2.21	KUPELNA	2012	2012012	2012	2012
2.22	KUPELNA	2012	2012012	2012	2012
2.23	KUPELNA	2012	2012012	2012	2012
2.24	KUPELNA	2012	2012012	2012	2012
2.25	KUPELNA	2012	2012012	2012	2012
2.26	KUPELNA	2012	2012012	2012	2012
2.27	KUPELNA	2012	2012012	2012	2012
2.28	KUPELNA	2012	2012012	2012	2012
2.29	KUPELNA	2012	2012012	2012	2012
2.30	KUPELNA	2012	2012012	2012	2012