

Apartment Three-bedroom (4+kk)

€ 856 744 | CZK 21 500 000

131 m², Prague 5, Jinonice, Butovická

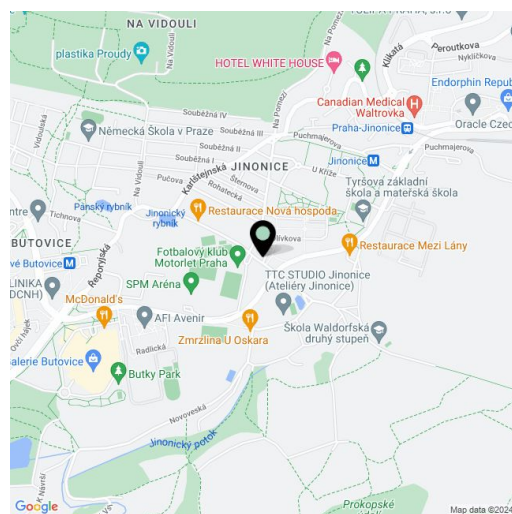


Apartment Three-bedroom (4+kk)

€ 856 744 | CZK 21 500 000

131 m², Prague 5, Jinonice, Butovická

Total area	131 m ²
Parking	Parking space
Cellar	3 m ²
PENB	G
Reference number	101734



* Area of the unit according to the Civil Code. The area consists of the sum total area of the entire unit bounded by perimeter walls.

This very spacious apartment is part of a historic building with unique craftsmanship elements. The building is part of a traditional residential development in old Jinonice with an impressive atmosphere and excellent transport accessibility.

The area of the 1st floor apartment consists of a bright and spacious living room with a preparation for a kitchen (almost 60 m² in total), 2 bedrooms, a bathroom, a separate toilet, a foyer, and a hallway. With an easy modification, the availability can be changed to 3-bedroom.

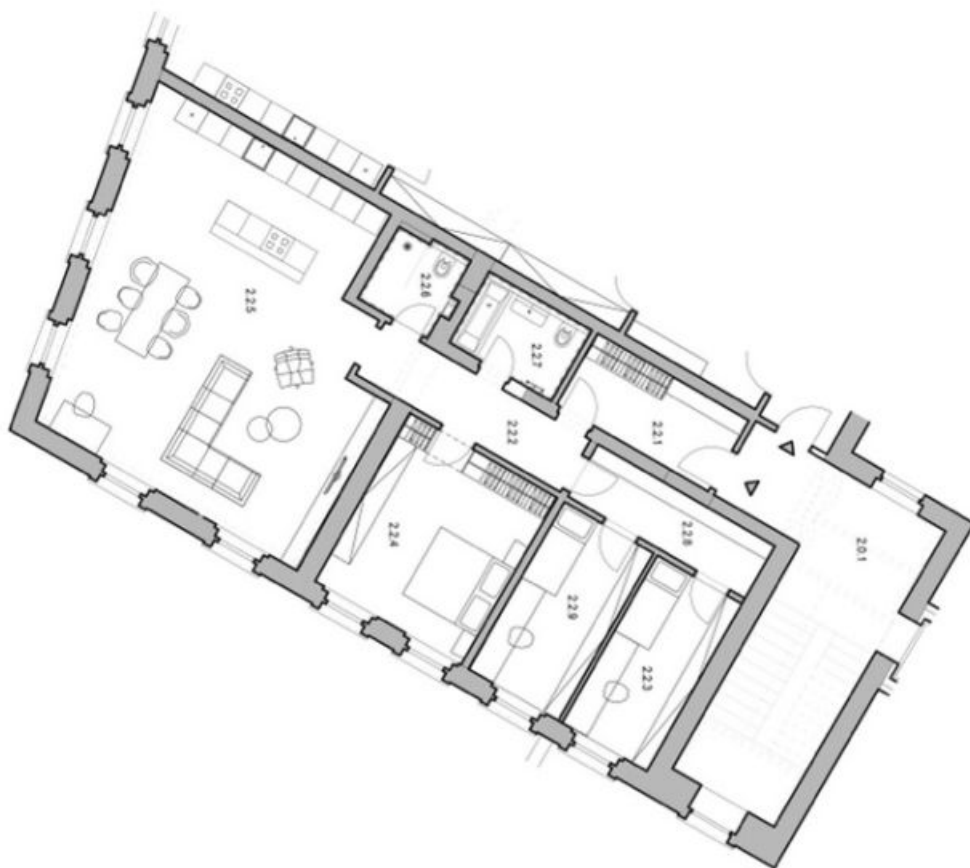
The residence consists of only 6 residential units. Facilities include wooden windows and painted wooden entrance doors with safety fittings. Floors are three-layer glued wood with underfloor heating; the heat source is a heat pump. The bathroom is fully equipped, including a heated towel rail.

A convenient location in a nice and quiet place and at the same time within walking distance of everything you need. The house is part of an original historical building, the dominant feature of which is the Church of St. Laurel from the 11th century and a wooden belfry. It only takes a few minutes to walk to the Jinonice metro station. A supermarket, other shops and restaurants are in the nearby Waltrovka new residential district, and a kindergarten, a Waldorf and classical elementary school or a Charles University building are nearby. A bike path passes through the area, along which you can reach the Prokopské údolí nature reserve in just a short time.

Floor area 131 m².

Apartment Three-bedroom (4+kk)

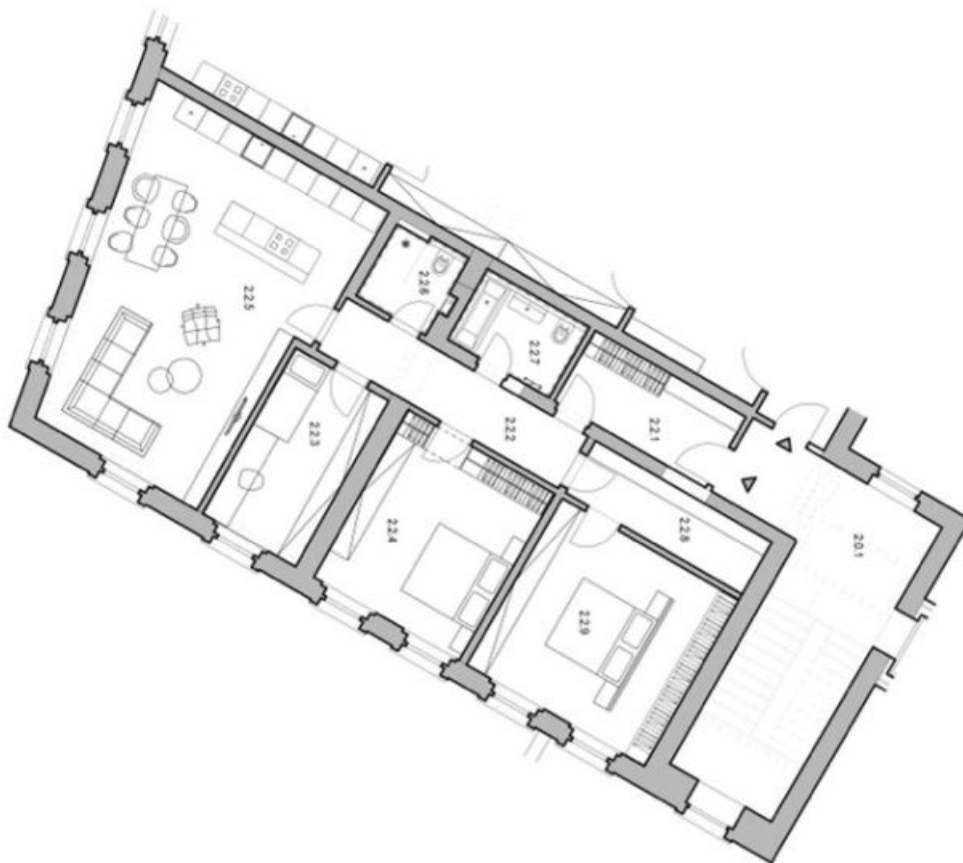
€ 856 744 | CZK 21 500 000

131 m², Prague 5, Jinonice, Butovická

2.NP BYT A.2.2 4+kk		
ozn.	název místnosti	plocha [m ²]
2.2.1	zádvěstí	8,40
2.2.2	chodba	7,5
2.2.3	ložnice	10,1
2.2.4	ložnice	16,92
2.2.5	obývací pokoj + kk	56,4
2.2.6	koupelna	4,20
2.2.7	koupelna	4,00
2.2.8	chodba	6,6
2.2.9	ložnice	10,7
Celková plocha bytu		124,82

Apartment Three-bedroom (4+kk)

€ 856 744 | CZK 21 500 000

131 m², Prague 5, Jinonice, Butovická

2.NP BYT A.2.2 4+kk		
ozn.	název místnosti	plocha [m ²]
2.2.1	zádvěří	8,40
2.2.2	chodba	9,1
2.2.3	ložnice	11,1
2.2.4	ložnice	16,92
2.2.5	obývací pokoj + kk	43,4
2.2.6	koupelna	4,20
2.2.7	koupelna	4,00
2.2.8	chodba	6,6
2.2.9	ložnice	21,3
Celková plocha bytu		125,0