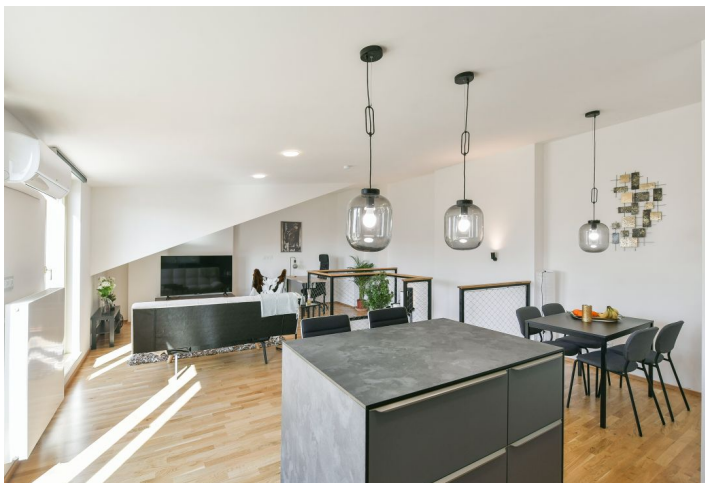


Apartment Two-bedroom (3+kk)

Rented

79 m², Prague 2, Nové Město, Legerova

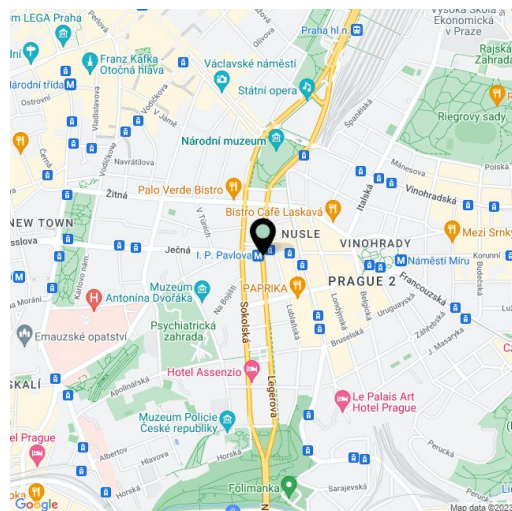


Apartment Two-bedroom (3+kk)

Rented

79 m², Prague 2, Nové Město, Legerova

Total area	94 m ²
Floor area*	79 m ²
Terrace	15 m ²
Parking	Garage.
Garage	Yes
Cellar	-
Service price	Monthly deposit for services, water, electricity, heating, and garage maintenance: CZK 6,730.
PENB	G
Reference number	101377
Available from	01.05.2025



* Area of the unit according to the Civil Code. The area consists of the sum total area of the entire unit bounded by perimeter walls.

This brand new, furnished air-conditioned split-level apartment facing the courtyard, with air-conditioning, a jacuzzi, and a terrace offering far-reaching views is situated on the 6th floor of a well-maintained fully modernized residential building with an elevator and a large shared terrace in the courtyard. Located on a busy street mere steps from the I.P. Pavlova metro station (line C), with full amenities and services within easy reach. Within walking distance of the city center, the Náměstí Míru metro station (line A) as well as Folimanka Park.

The lower floor of the apartment features 2 bedrooms, a bathroom (walk-in shower, toilet, bidet shower), a utility room, a storage room, and an entrance hall. The upper floor offers a living room with a fully fitted open plan kitchen with a terrace and jacuzzi.

Air-conditioning, hardwood floors, tiles, interior roller blinds, washing machine, dishwasher, induction cooktop, microwave oven, video entry phone. A single garage in the courtyard of the building is available at CZK 3,500/month. Available from 15th of April 2023.