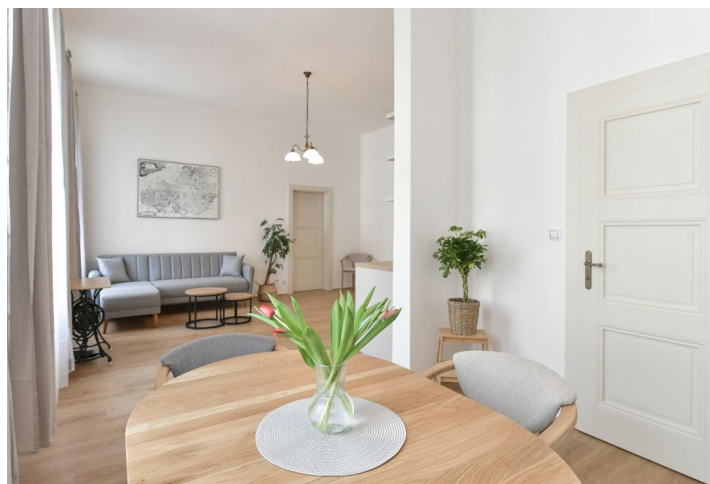


## Apartment One-bedroom (2+kk)

Rented

63 m<sup>2</sup>, Prague 1, Nové Město, Revoluční



## Apartment One-bedroom (2+kk)

Rented

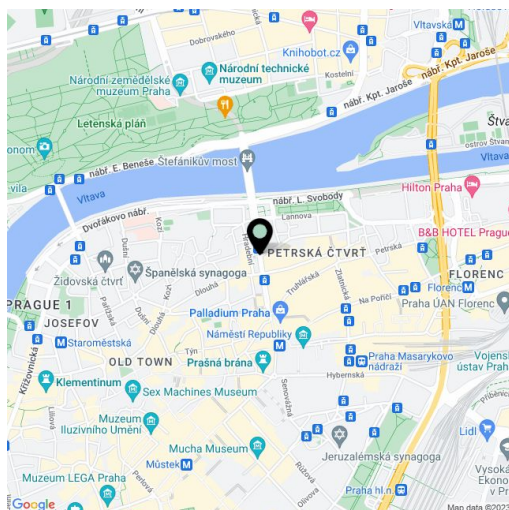
63 m<sup>2</sup>, Prague 1, Nové Město, Revoluční

Total area	63 m <sup>2</sup>
Parking	-
Cellar	-
Service price	Monthly deposit for services and water CZK 1,000/person/month. Gas and electricity - transferred to the tenant.
PENB	G
Reference number	101334
Available from	Immediately

This completely refurbished semi-furnished quiet apartment with access to a courtyard terrace is situated on the 4th floor of a well-maintained renovated Art Nouveau building with an elevator just a few steps away from Náměstí Republiky Square, within easy reach of complete amenities incl. the Palladium and Kotva shopping malls, the Divadlo v Dlouhé Theater, quality restaurants, cafes, and clubs. The Náměstí Republiky metro station (line B) is just a two-minute walk away, there is a tram stop mere steps from the building, and it is only a short walk to Lannova Park, the courtyard garden in the Convent of St. Agnes, and Letná Park on the opposite bank of the Vltava River.

The interior features a living room with a fully fitted open plan kitchen and dining area, a bedroom with a large built-in wardrobe, a bathroom (bathtub, walk-in shower), a separate toilet, and an entrance hall with a large built-in wardrobe and storage.

New equipment, tiles, laminate floors, gas boiler, new kitchen, dishwasher, induction cooktop, Bosh washer and dryer.



\* Size of the unit according to the Housing Act.  
The area consists of the sum total of the internal area of every room.

# Apartment One-bedroom (2+kk)

Rented

63 m<sup>2</sup>, Prague 1, Nové Město, Revoluční

