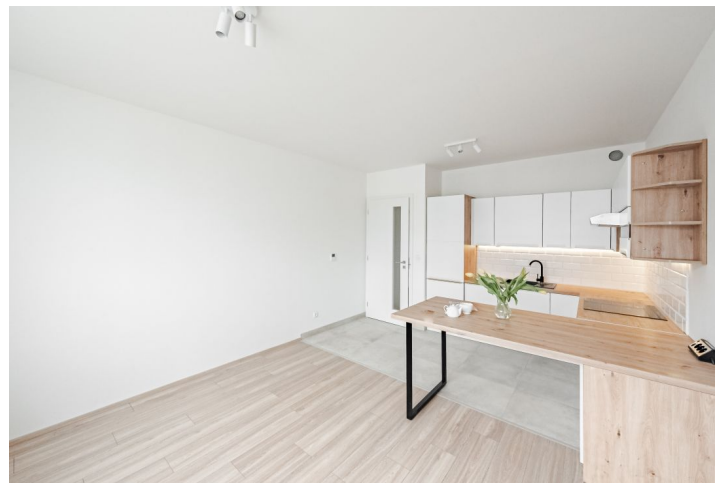
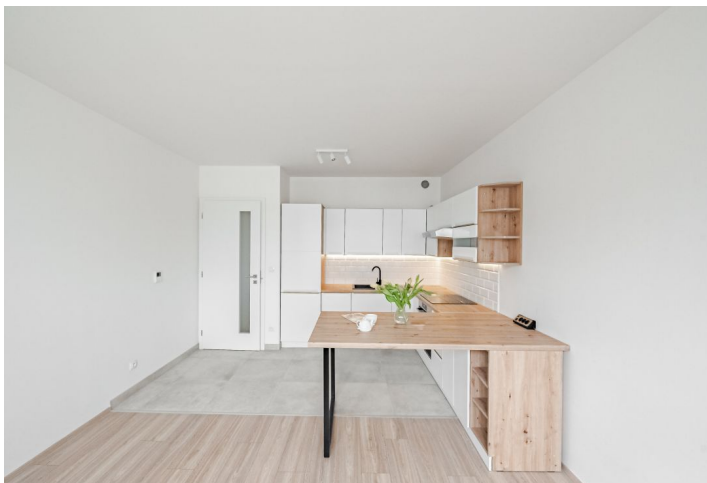
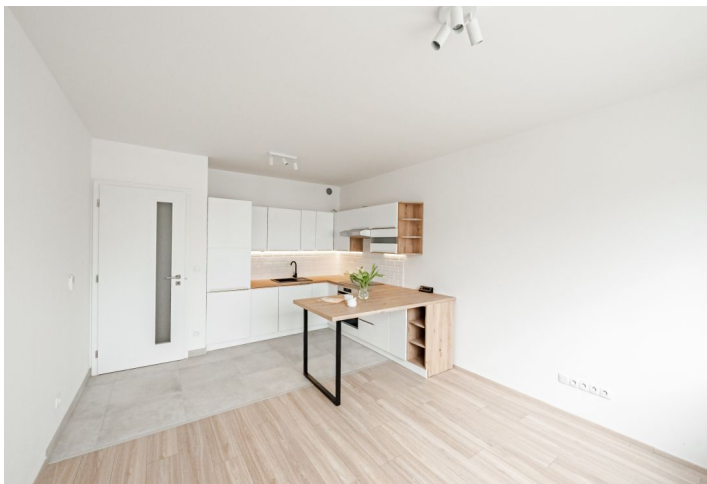


## Apartment One-bedroom (2+kk)

Rented

52 m<sup>2</sup>, Prague 7, Holešovice, V Háji



## Apartment One-bedroom (2+kk)

Rented

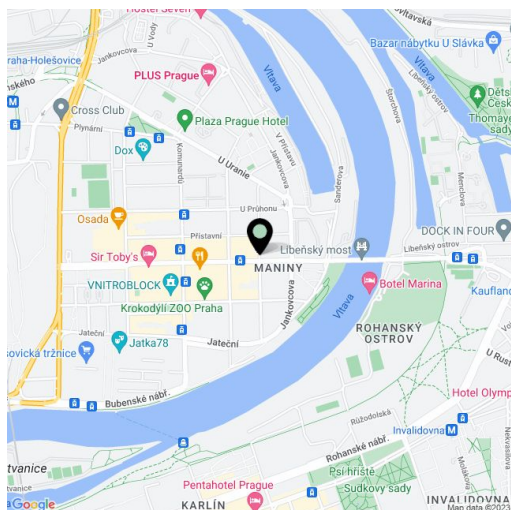
52 m<sup>2</sup>, Prague 7, Holešovice, V Háji

Total area	52 m <sup>2</sup>
Parking	-
Cellar	Yes
Service price	Monthly deposit for services, water, and heating: CZK 4,500. Electricity is billed separately.
PENB	B
Reference number	101207
Available from	Immediately

This unfurnished apartment is on the 4th floor of a modern residential building with an elevator, on a quiet street in Holešovice, Prague 7, in a location with full amenities within easy reach and excellent access to the city center—tram connections to the Palmovka, Vltavská, and Nádraží Holešovice metro stations. Conveniently located for the Holešovice Squash Center, the Rohanský Ostrov driving range, the DOX Centre for Contemporary Art, the Prague Market, and many theaters and music clubs incl. SaSaZu, La Fabrika, Rock Opera, and Jatka 78.

The interior features a living room with a fully fitted open plan kitchen, a bedroom with a fitted **walk-in closet**, a bathroom with a walk-in shower and toilet, a **walk-in closet**/storage room, and an entrance hall.

Laminate floors, tiles, well insulated soundproof windows, washing machine, dishwasher, video entry phone, **cellar (1.8 sq. m.)**.



\* Area of the unit according to the Civil Code. The area consists of the sum total area of the entire unit bounded by perimeter walls.