

## Office space

Ask for price

Brno-město, Maloměřice, Hády



## Office space

Ask for price

Brno-město, Maloměřice, Hády

Available area	1 731 m <sup>2</sup>
Cellar	-
Terrace	80 m <sup>2</sup>
Parking	-
PENB	A
Reference number	100971

This commercial complex located in the Hády business center offers quality office space for lease as well as workshops, warehouses, and land with a total area of 19,000 sq. m. The building has a reception, 24-hour security, CCTV, air-conditioning with heating, and is wheelchair accessible. A large handling area allows for the entry and parking of cars and trucks. A training center can be leased in the basement of the building.

The office building offers a total of 4,130 sq. m for lease (ground floor to 4th floor). Each floor has its own kitchenette, storage room, and copy room. On the 4th floor, there is a possibility to use an outdoor terrace of 80 sq. m. There are also workshops of 920 sq. m, warehouses of 633 sq. m, and land of 13,145 sq. m.

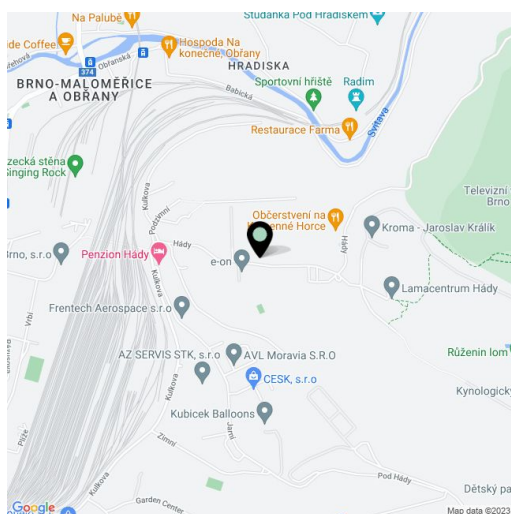
**Location:**

Excellent transport accessibility by car and public transport. The Červený Písek bus stop is right in front of the complex. The city center is about 17 minutes away by car.

**Features and services:**

- Reception
- 24/7 security
- Camera system
- Air-conditioning
- Heating
- Wheelchair access
- Load-bearing carpets
- Exterior blinds
- LED energy saving lighting with dimmable lighting intensity control
- Fire detectors

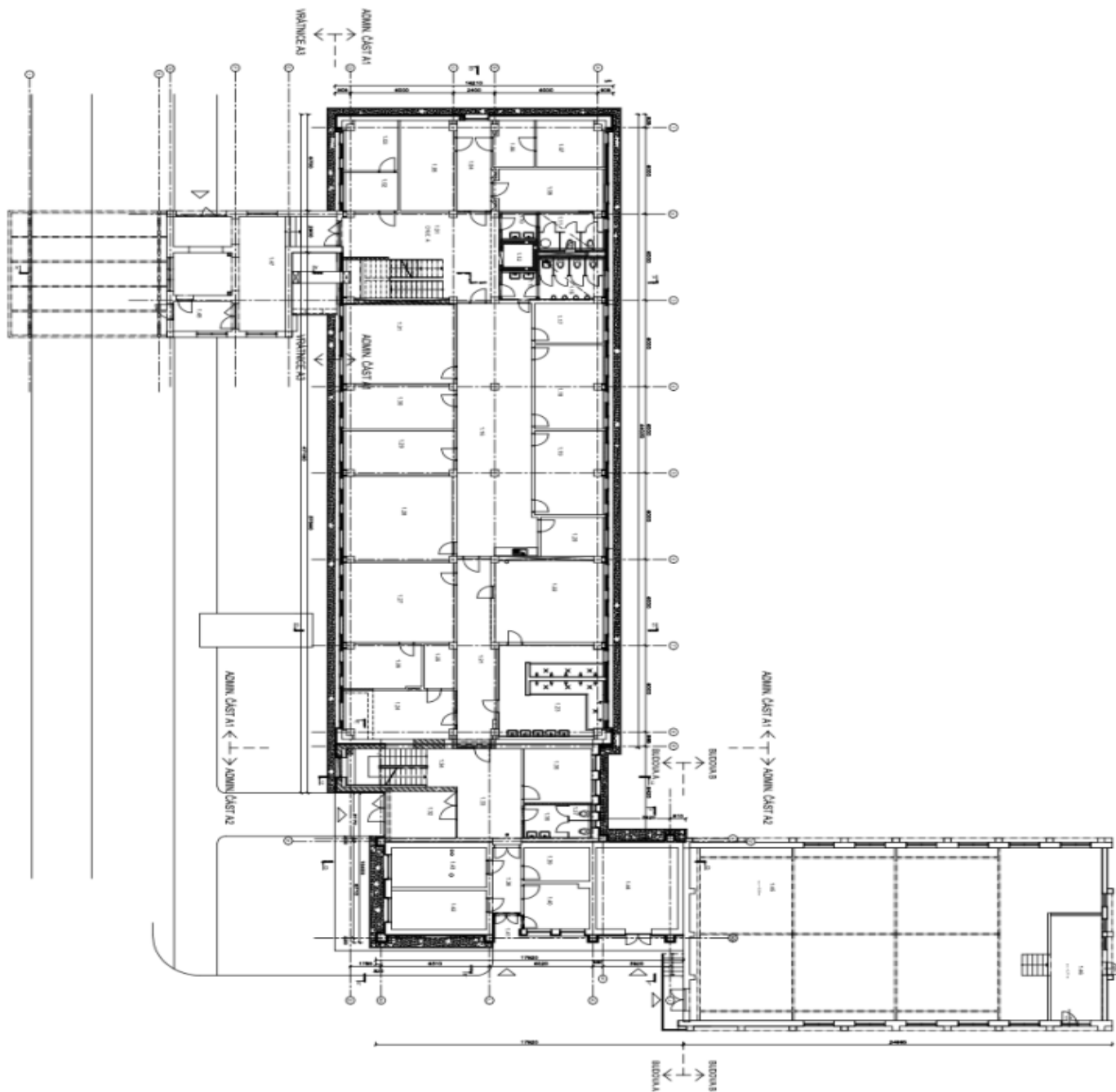
Rental and service charges listed without VAT. Lessee pays no commission.



# Office space

Ask for price

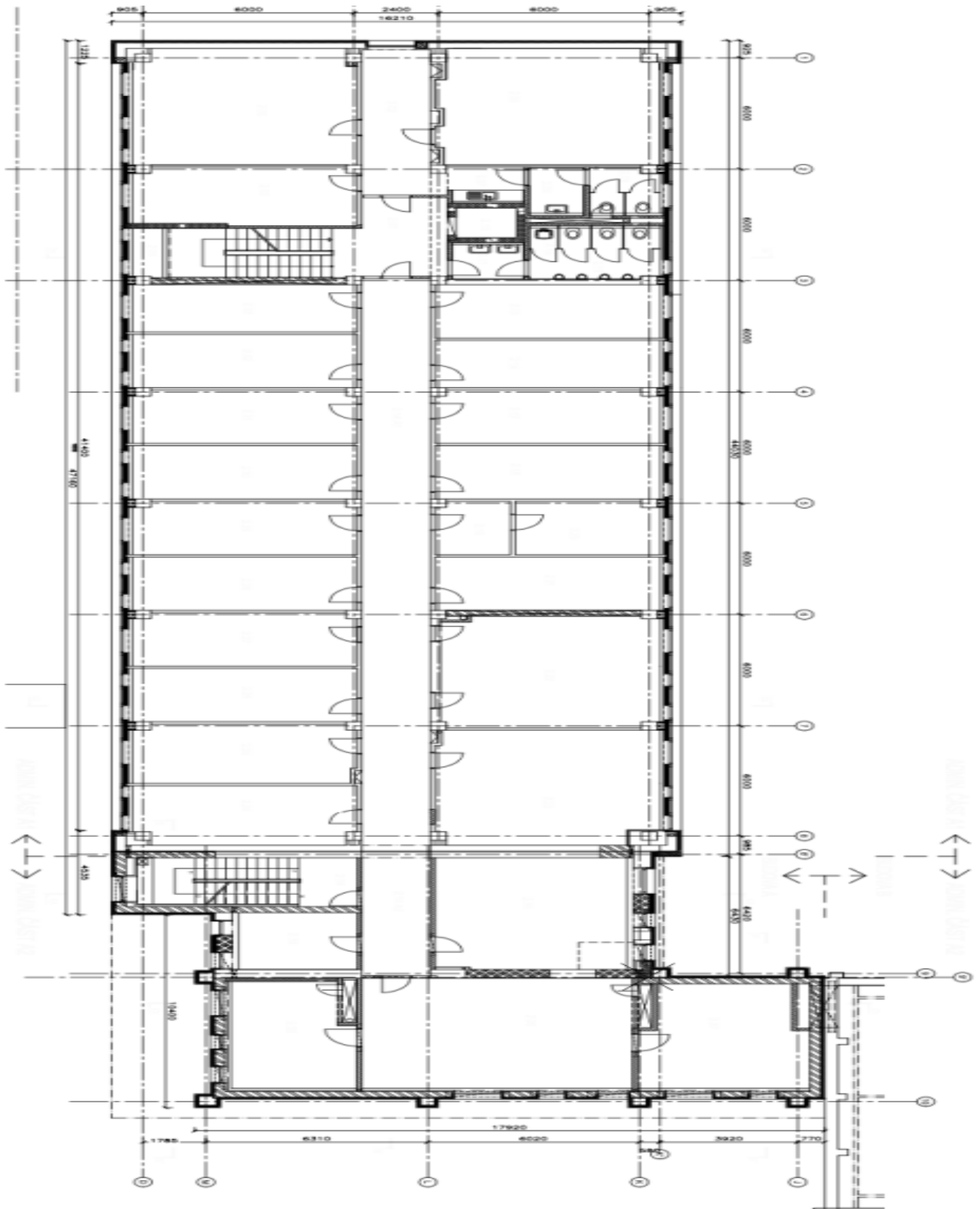
Brno-město, Maloměřice, Hády



Office space

Ask for price

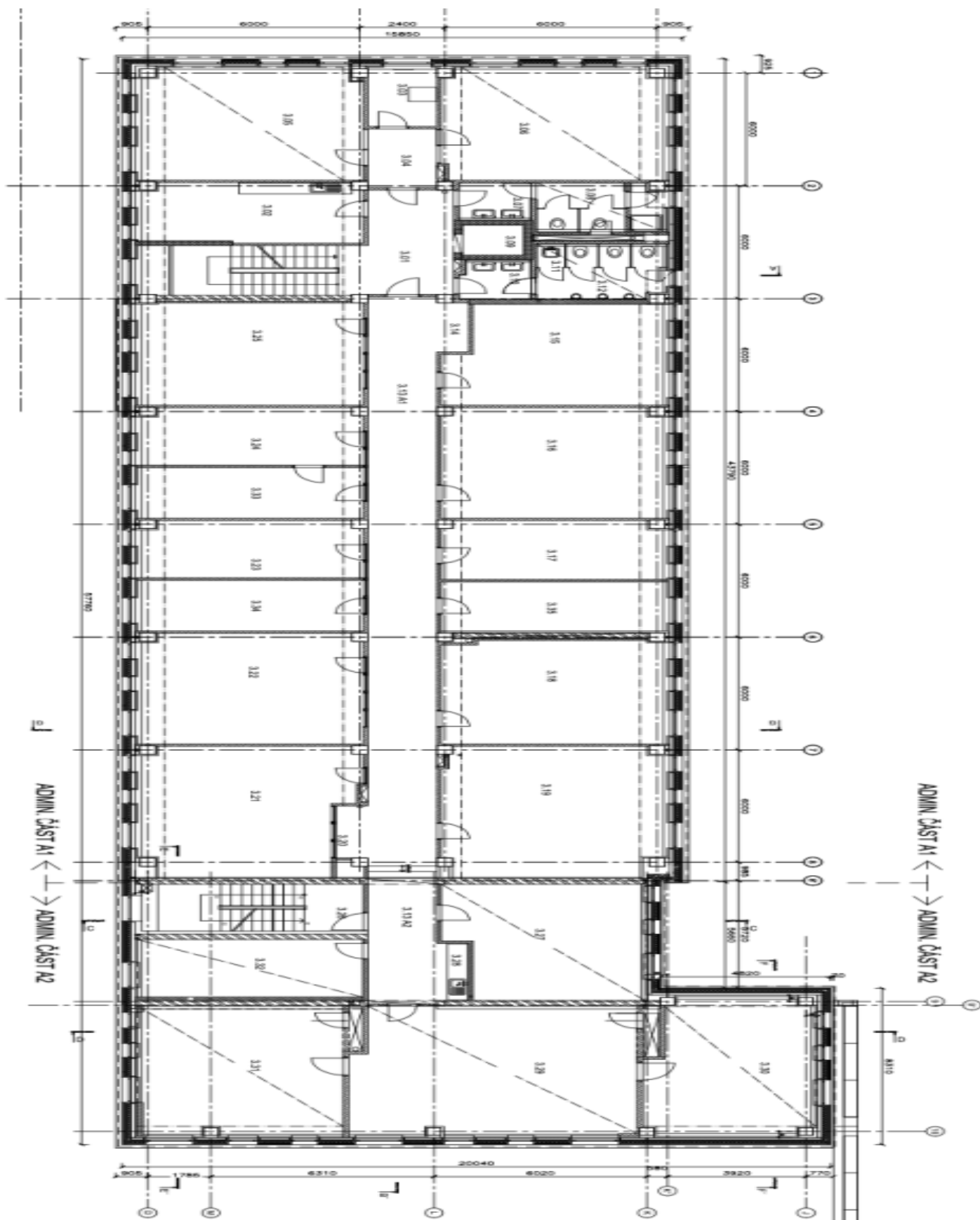
Brno-město, Maloměřice, Hády



Office space

Ask for price

Brno-město, Maloměřice, Hády



Brno-město, Maloměřice, Hády

