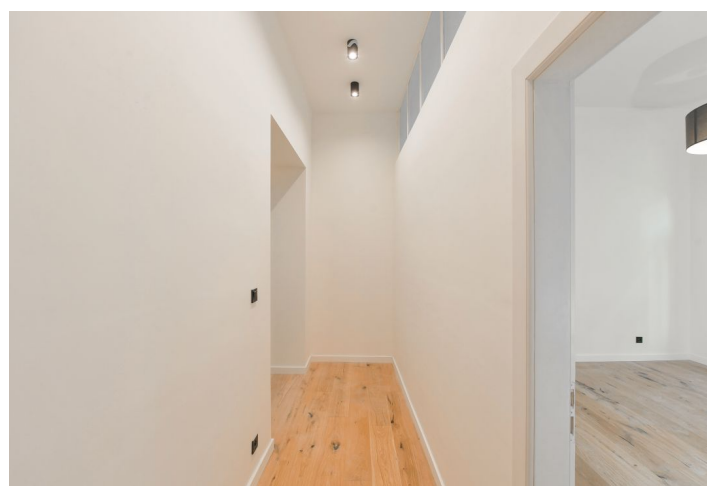


## Apartment Two-bedroom (3+kk)

Sold

70 m<sup>2</sup>, Prague 1, Nové Město, Řeznická



## Apartment Two-bedroom (3+kk)

Sold

70 m<sup>2</sup>, Prague 1, Nové Město, Řeznická

Total area	70 m <sup>2</sup>
Parking	-
Cellar	3 m <sup>2</sup>
Service price	2 000 CZK monthly
PENB	G
Reference number	100576

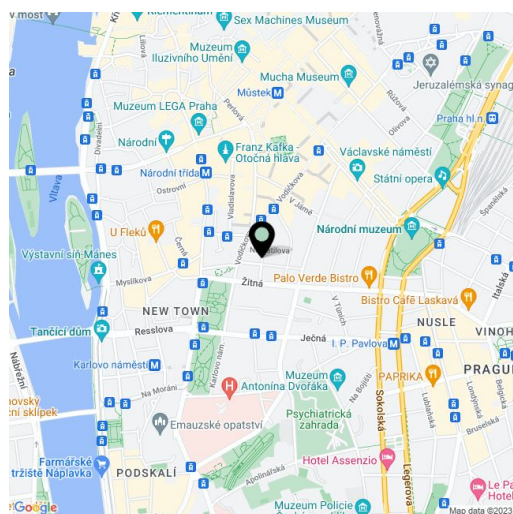
This renovated corner apartment with plenty of daylight is located on the 1st floor of an elegant corner building standing right in the center of Prague and at the same time in a quieter part of New Town, not far from Charles and Wenceslas Squares.

The area of the apartment consists of a corner living room with a preparation for a kitchen, a bedroom, a walk-through study, a bathroom (with a bathtub and toilet), a foyer, and a hallway.

The apartment with barrier-free elevator access has been renovated; windows are casement and floors are wooden. Heating is provided by a gas boiler. The apartment comes with a cellar (3 sq. m.).

The building stands on the corner of two one-way streets, and everything you need is within walking distance. There is a grocery store, and other shops, restaurants, cafes, theaters, and cinemas are in the vicinity; trams and all metro lines provide excellent transport services. The location is made even more pleasant by the park on Charles Square, the revitalized Čelakovského Sady Garden, or the nearby Františkanská and Kateřinská gardens.

Floor area 70.1 m<sup>2</sup>.



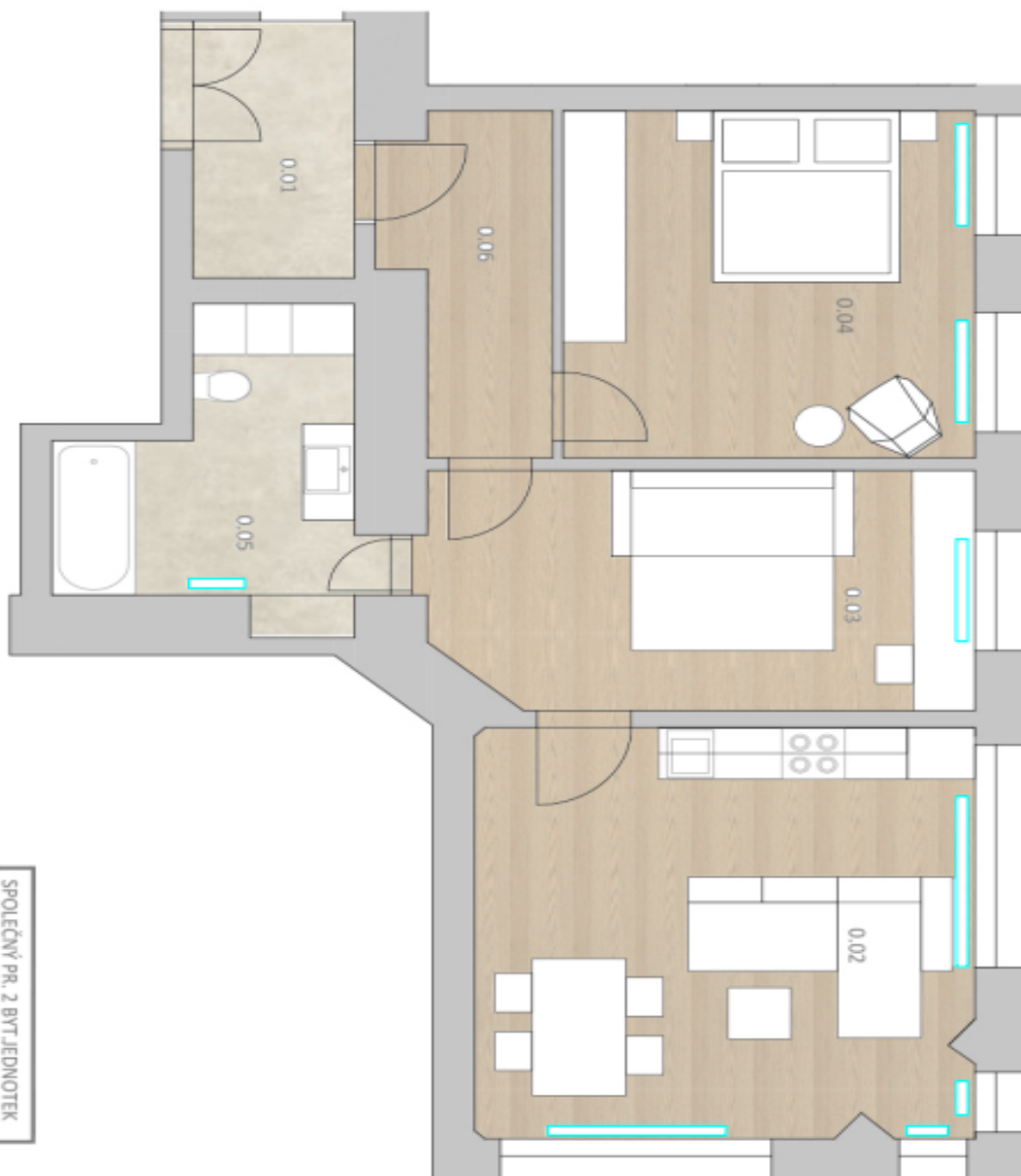
\* Size of the unit according to the Housing Act.

The area consists of the sum total of the internal area of every room.

# Apartment Two-bedroom (3+kk)

**Sold**

70 m<sup>2</sup>, Prague 1, Nové Město, Řeznická



SPOLEČNÝ PR. 2 BYT.JEDNOTEK		
č.	místnost	m <sup>2</sup>
0.01	společný prostor z armovaných rekvizit	5,1
plocha - interier		<b>5,1</b>

TABULKA MÍSTNOSTÍ - BYT 1		
č.	místnost	m <sup>2</sup>
0.02	OBYVACÍ PROSTOR	24,1
0.03	POKOUJ	15,1
0.04	LOŽNICE	16,6
0.05	CHOUBA	5,8
0.06	KOUPELNA, WC	8,5
plocha - interier		<b>70,1</b>