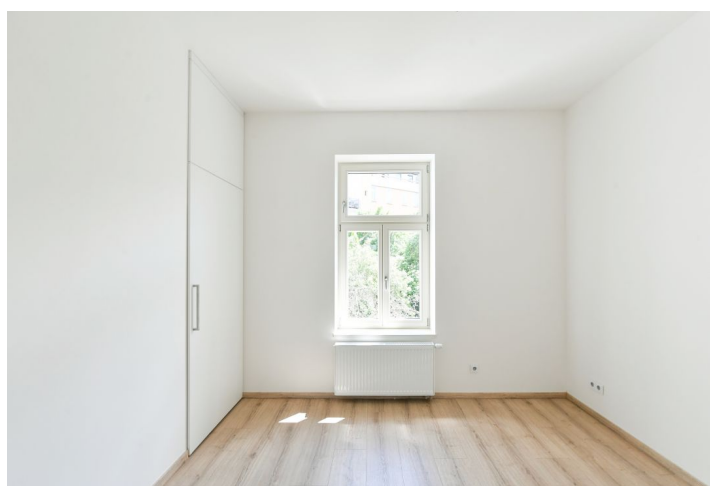
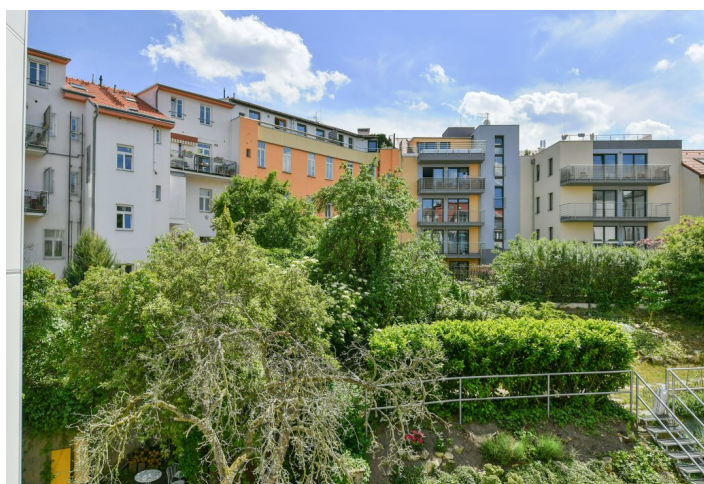


Apartment One-bedroom (2+1)

Rented

62 m², Prague 6, Břevnov, Závěrka



Apartment One-bedroom (2+1)

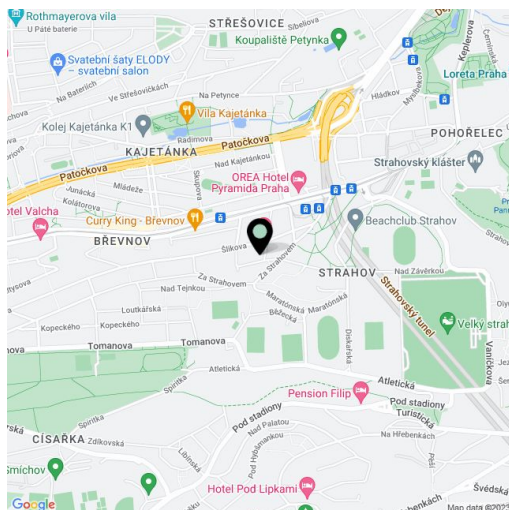
Rented62 m², Prague 6, Břevnov, Závěrka

Total area	62 m ²
Parking	-
Cellar	-
Service price	Monthly deposit for service charges and water: CZK 600/person. Gas and electricity are billed separately.
PENB	G
Reference number	100518
Available from	Immediately

This renovated 1-bedroom apartment is on the second floor of a well-maintained residential building with no elevator. Located in a quiet Prague 6 neighborhood just minutes from a tram stop, a short walk to the Prague Castle, and within easy reach of Ladronka Park, the airport, and numerous international schools. Full amenities within walking distance incl. numerous restaurants, cafes, shops, and sports and cultural venues as well as quick access to the Hradčanská and Malostranská metro stations (five tram stops away).

The apartment includes a spacious living room, a fully fitted kitchen with a dining area, a bedroom facing the courtyard (with built-in storage space), a shower room, a separate toilet, and an entrance hall with built-in wardrobes.

Hardwood floors, tiles, security entry door, gas boiler, washing machine, dishwasher, induction cooktop, microwave oven.



* Area of the unit according to the Civil Code. The area consists of the sum total area of the entire unit bounded by perimeter walls.