

Apartment Three-bedroom (4+1)

€ 3 805 | CZK 95 000

146 m², Prague 1, Staré Město, Melantrichova



Apartment Three-bedroom (4+1)

€ 3 805 | CZK 95 000

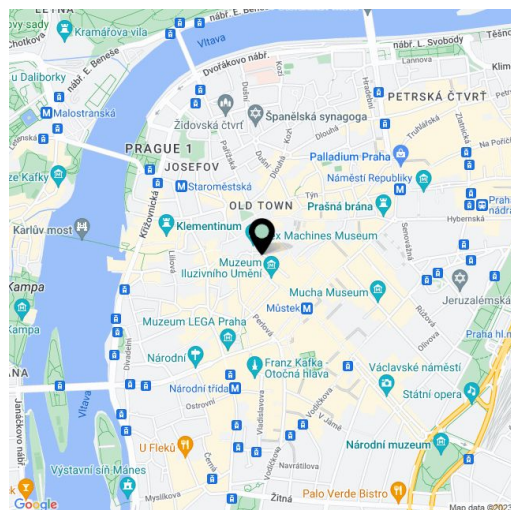
146 m², Prague 1, Staré Město, Melantrichova

Total area	146 m²
Parking	-
Cellar	-
Service price	Monthly deposit for services and water: CZK 4,000 for two persons. Electricity - transferred to the tenant.
PENB	G
Reference number	100280
Available from	Immediately

This completely renovated and furnished apartment with a timeless interior finished to a high standard boasts an impressive combination of original handicraft elements with modern technologies and a thoughtful layout, resulting in comfortable living in a boutique apartment building that stands in the very historic center of Prague. Its unique location in Old Town is within walking distance of everything you need and easily accessible by metro and tram. It is close to the Old Town and Wenceslas squares, with a wide range of restaurants, cafes, clubs, and theaters in the vicinity, as well as a host of other necessary services—grocery stores, other types of shops, and schools of all levels.

The 2nd floor apartment consists of a living room, a fully fitted eat-in kitchen, and 3 bedrooms, each with its own bathroom. The master bedroom also has a **walk-in closet**. An entrance hall and a large utility room with storage space complete the space.

Original renovated **parquet floors** combined with new oak ones, **casement windows** with triple-glazed panes, built-in storage, **Light Works designer light fixtures**, original coffered interior doors, **travertine** tiling in the bathrooms, heating by a heat pump, cooling, washer/dryer, dishwasher, induction cooktop, microwave oven, American type Hisense refrigerator.



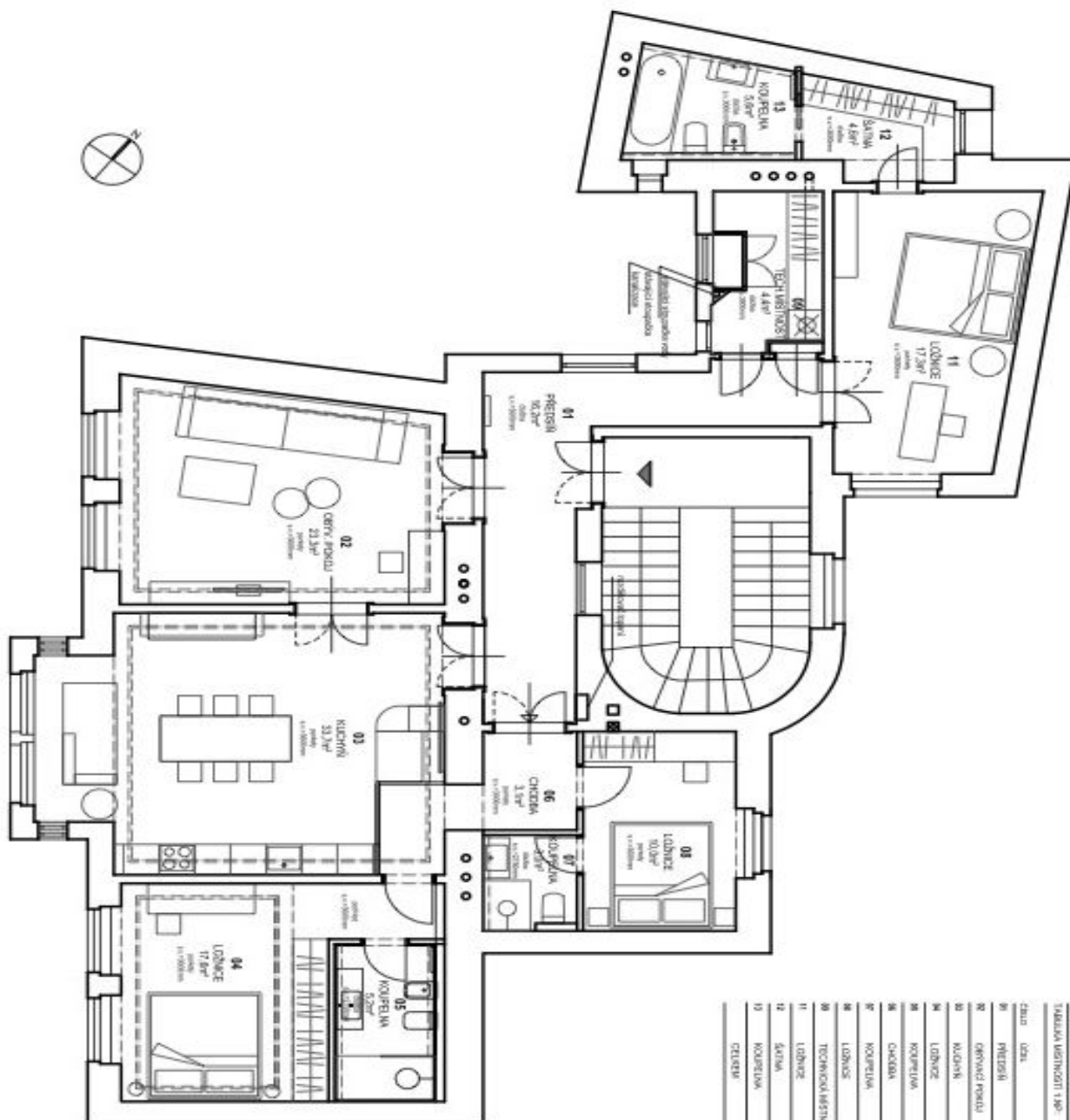
* Size of the unit according to the Housing Act.

The area consists of the sum total of the internal area of every room.

Apartment Three-bedroom (4+1)

€ 3 805 | CZK 95 000

146 m², Prague 1, Staré Město, Melantrichova



Číslo	Užitá plocha	Plocha
01	PŘEDSÍŇ	9,2
02	ORAVNÍ POKOJ	23,3
03	KUCHYNĚ	3,1
04	LOUBNE	17,8
05	KOUPELNA	5,2
06	LOUBNE	10,2
07	TECHNICKÁ KUCHYNĚ	5,0
08	LOUBNE	17,3
09	BALKÓN	4,8
10	KOUPELNA	5,6
11	TERRASA	14,0